

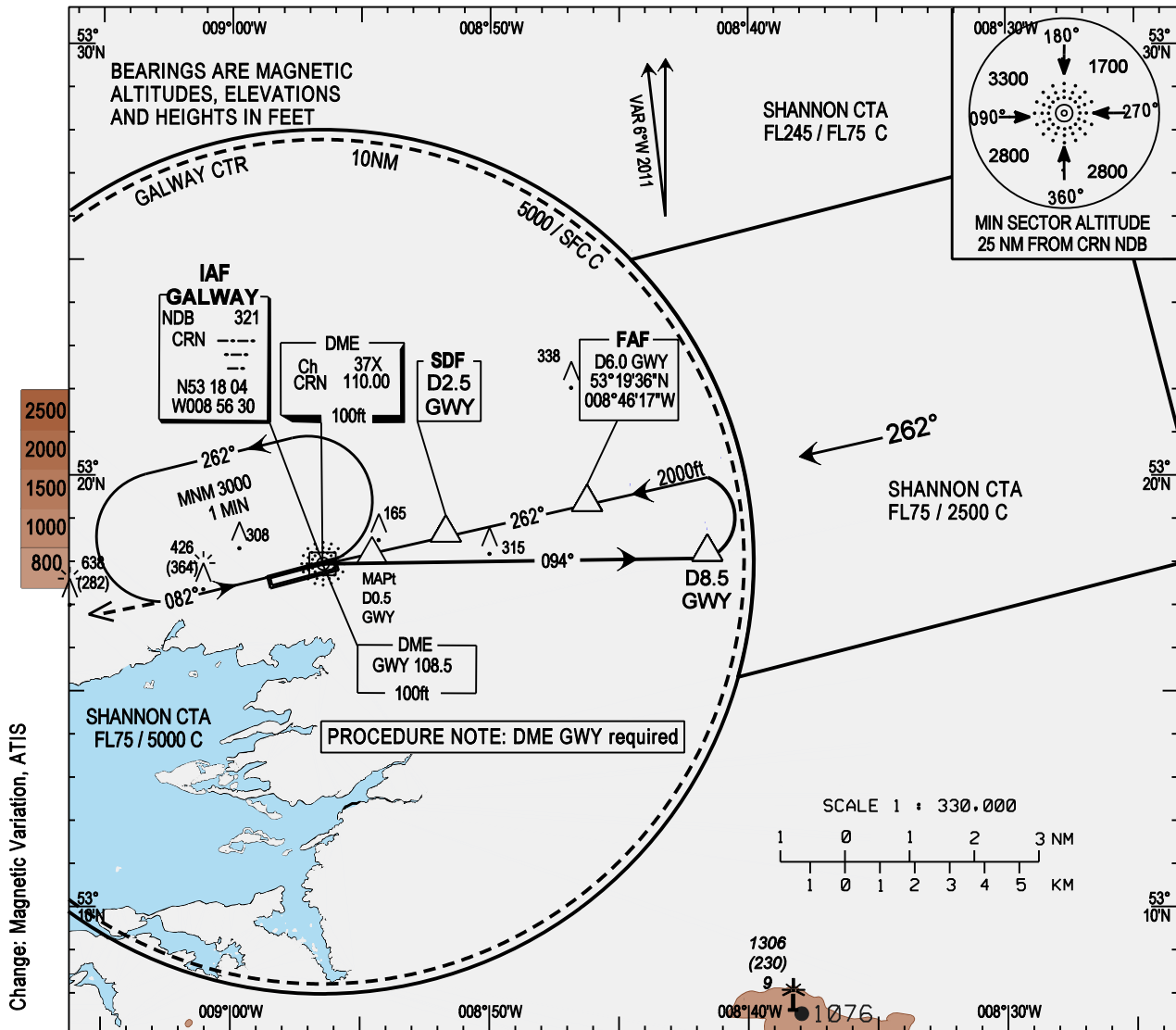
INSTRUMENT APPROACH CHART - ICAO

AERODROME ELEV 81 ft
HEIGHTS RELATED TO THR
RWY 26 - ELEV 81 ft

Tower 122.5
RADAR 121.4
Control 124.7
ATIS 118.225

CONSULT NOTAM
FOR LATEST
INFORMATION

GALWAY / GALWAY NDB RWY 26
(ACFT CAT A, B, C)

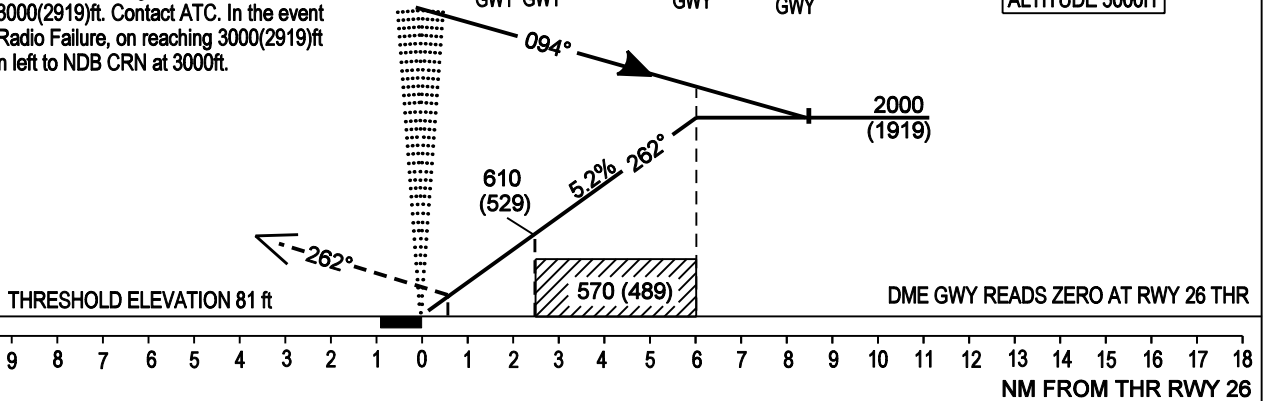


Change: Magnetic Variation, ATIS

Mapping Based on Ordnance Survey Ireland by Permission of the Government
© Government of Ireland Permit Number 7109

MISSED APPROACH:
At MAPt, climb straight ahead to 3000(2919)ft. Contact ATC. In the event of Radio Failure, on reaching 3000(2919)ft turn left to NDB CRN at 3000ft.

(IAF) NDB CRN 3000
MAPt D0.5 GWY
SDF D2.5 GWY
FAF D6.0 GWY
D8.5 GWY
TRANSITION ALTITUDE 5000ft



| | | | | | | | | | |
|--|---------------|-----------|-----------|---|-------------|-------------|-------------|-----------|-----------|
| OCA (OCH) | A | B | C | INSTRUMENT APPROACHES ONLY AVAILABLE WHEN AIR TRAFFIC CONTROL ZONE IS ACTIVE UNLESS AUTHORISED BY THE OPERATING STANDARDS DEPARTMENT OF THE IRISH AVIATION AUTHORITY. | | | | | |
| Straight In Approach | ← 420 (339) → | | | Recommended Profile | | | | | |
| | | | | DME | 5 | 4 | 3 | 2 | 1 |
| Visual Manoeuvring (These heights are AAL) | 610 (529) | 720 (639) | 820 (739) | Alt/Height | 1730 (1649) | 1410 (1329) | 1090 (1009) | 770 (689) | 450 (369) |
| | | | | Ground Speed | Kts | 140 | 120 | 100 | 80 |
| | | | | Rate of Decent | Ft/Min | 750 | 640 | 530 | 430 |
| | | | | Gradient - 5.2% | | | | | |