

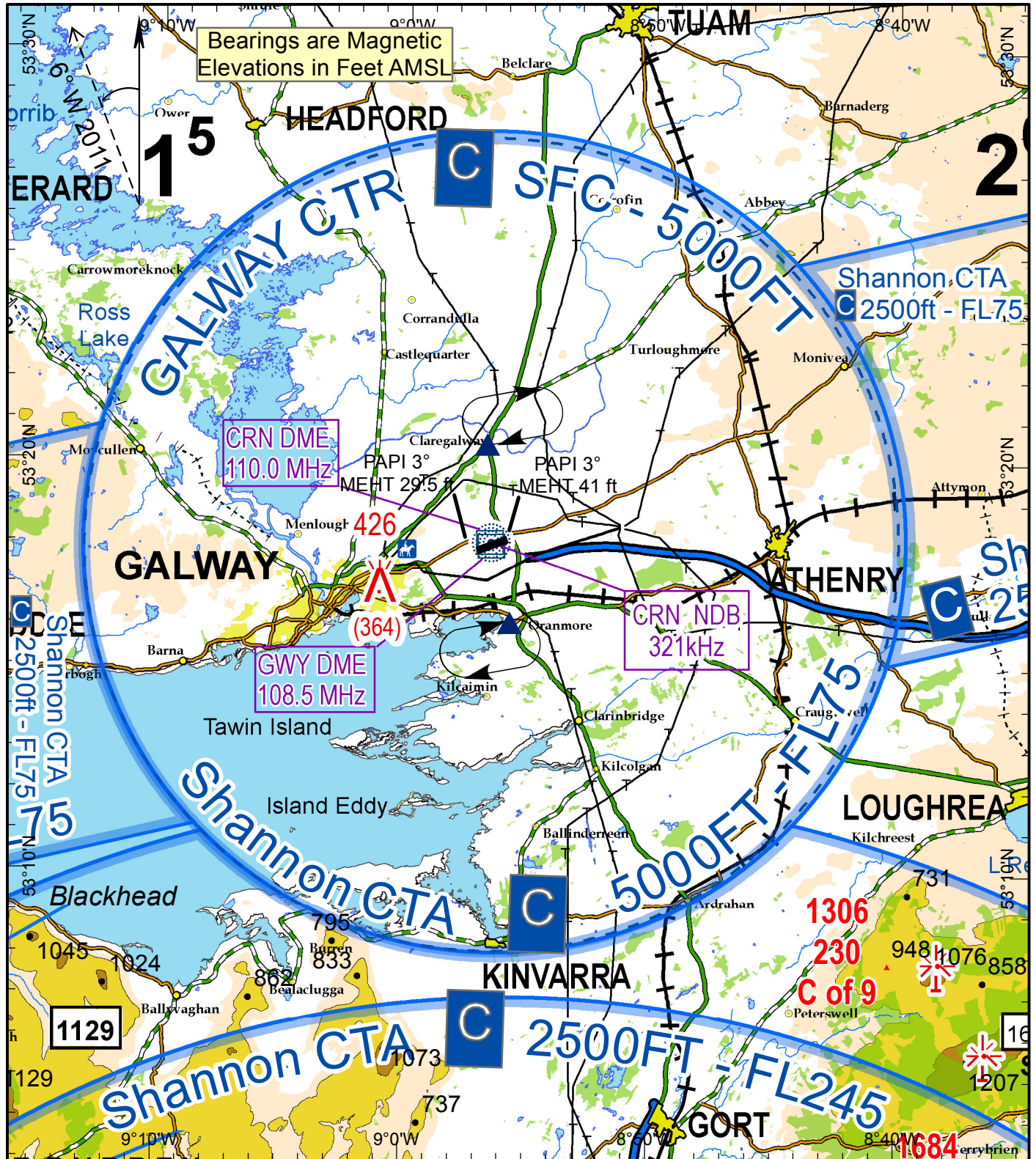
Visual Approach
Chart - ICAO

Aerodrome Elev.
81ft

TWR 122.5
GND 121.825
Emerg 121.5
ATIS 118.225

Consult NOTAM
for latest
information

Galway/Galway



Change: CRN DME Freq.

Mapping based on Ordnance Survey Ireland by permission of the Government © Government of Ireland Permit Number 7109

In the event of radio failure:

- Aircraft from the north, route via Tuam not above 1500ft to the Claregalway hold
- Aircraft from the south, route via Kinvara not above 1500ft to the Oranmore hold
- To receive landing instructions from the Control Tower via ALDIS lamp.

SCALE 1:250,000



Visual Holding Pattern
(Based on TAS 120 kts)

Claregalway 53°20'26.83"N
008°56'42.83"W

Oranmore 53°16'07.58"N
008°55'44.54"W