

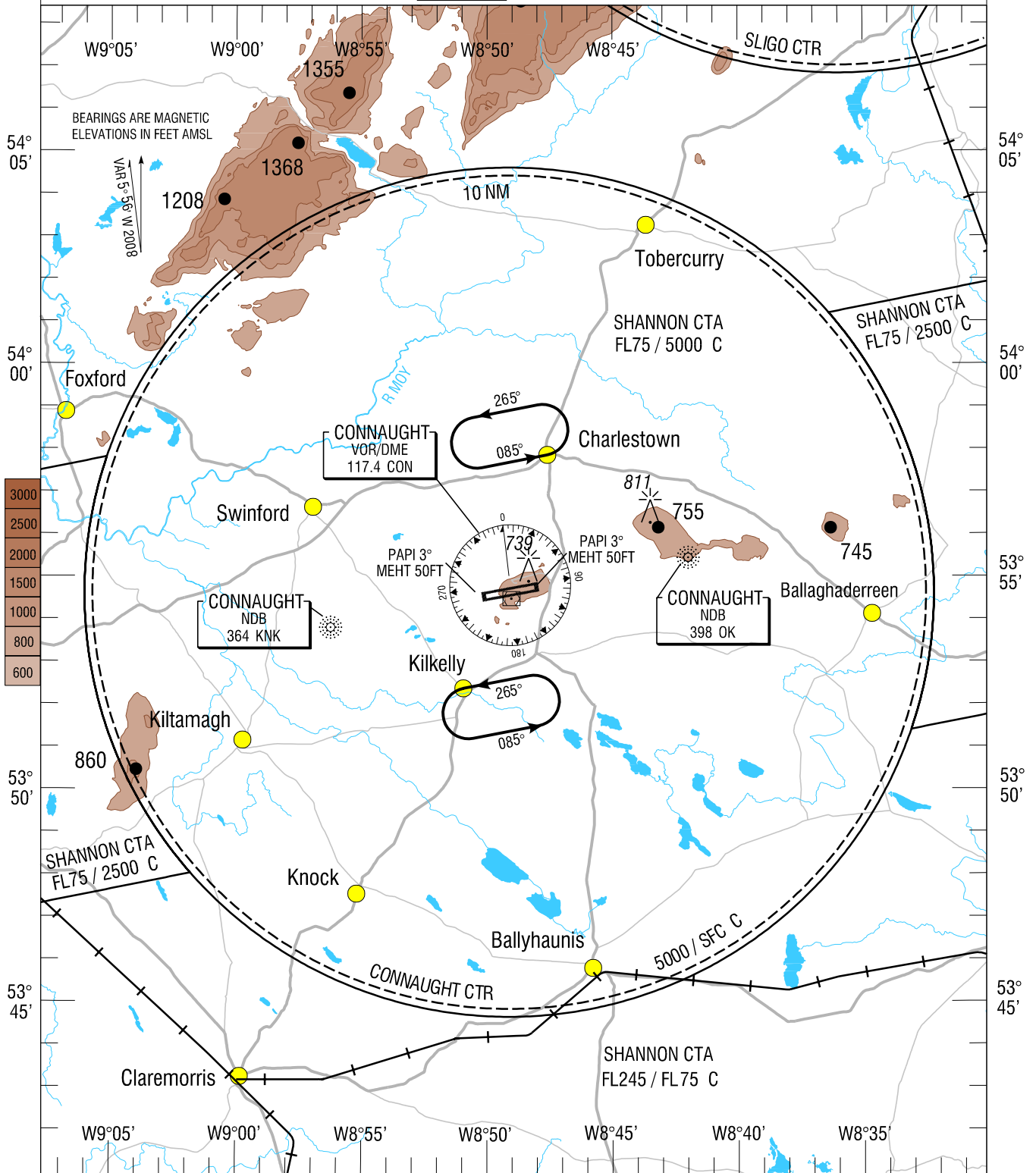
VISUAL APPROACH CHART - ICAO

AERODROME ELEV 665 ft

TWR 130.7
GND 121.9
Emerg 121.5

CONSULT NOTAM FOR LATEST INFORMATION

IRELAND WEST / KNOCK



Visual Holding Pattern (Based on TAS 120 kts)

Note 1: In the event of a radio failure :

- Aircraft from the North, route via Tobercurry not above 2000ft to the Charlestown Hold
- Aircraft from the South, route via Ballyhaunis not above 2000ft to the Kilkelly Hold to receive landing instructions from the Control Tower using the ALDIS lamp.

SCALE 1 : 250,000



Mapping based on Ordnance Survey Ireland by Permission of the Government © Government of Ireland Permit Number 7109

CHANGE : GENERAL REVISION