

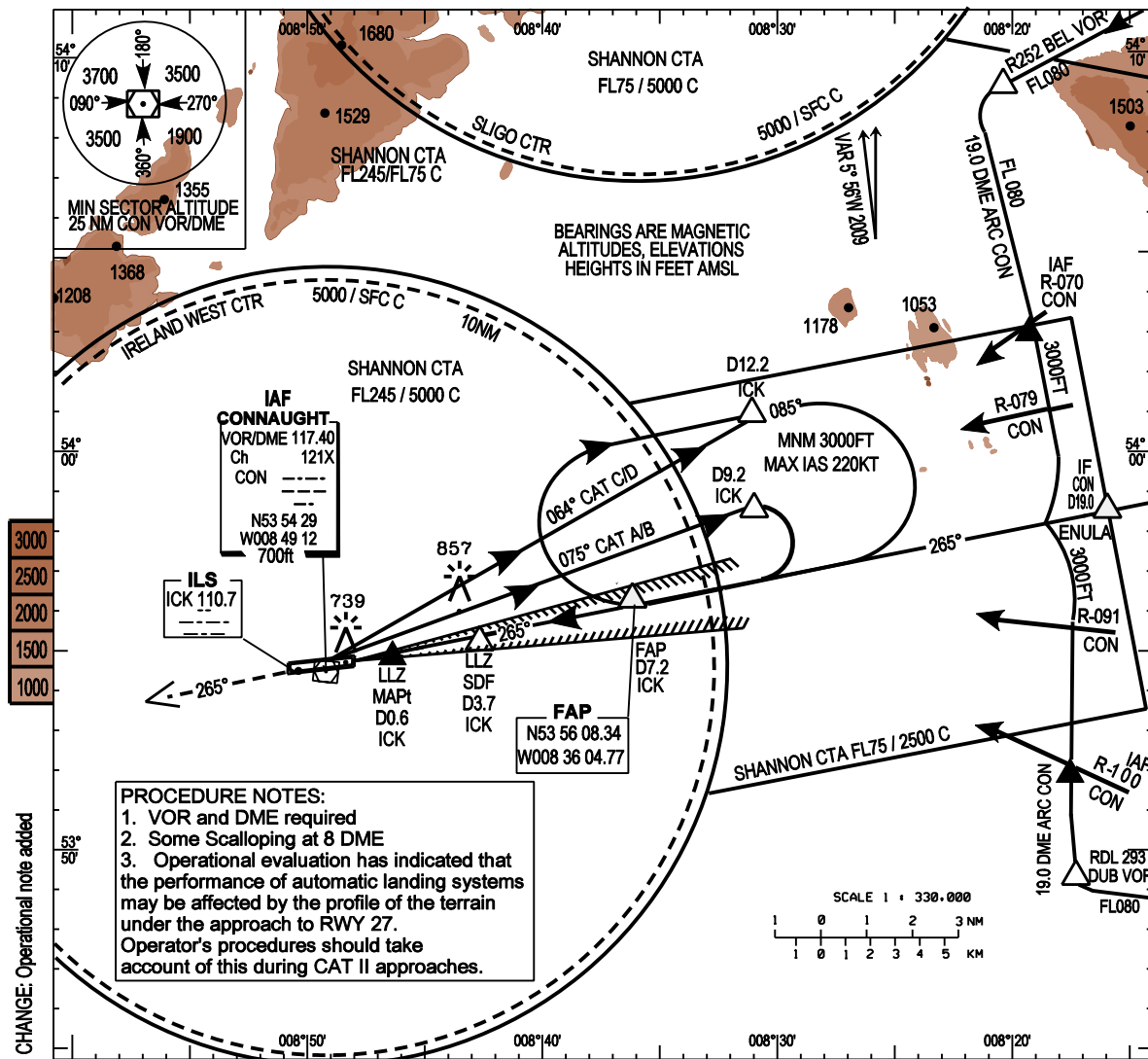
INSTRUMENT APPROACH CHART - ICAO

AERODROME ELEV 665ft
HEIGHTS RELATED TO THR RWY 27 - ELEV 665ft

TWR 130.7
GND 121.9
Emerg 121.5

CONSULT NOTAM FOR LATEST INFORMATION

IRELAND WEST/KNOCK
ILS A CAT I & CAT II or LLZ RWY 27
(ACFT CAT A,B,C,D)

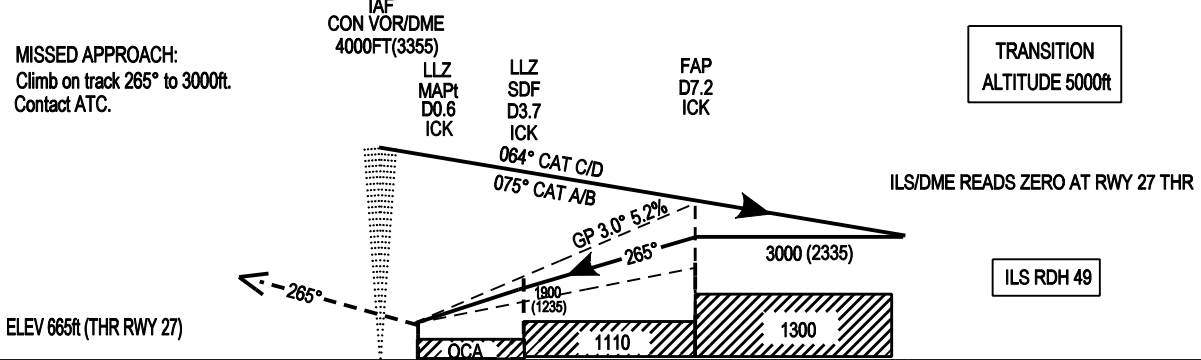


Mapping based on Ordnance Survey Ireland by Permission of the Government
Government of Ireland Permit Number 7109

CHANGE: Operational note added

MISSED APPROACH:
Climb on track 265° to 3000ft.
Contact ATC.

TRANSITION ALTITUDE 5000ft



7 6 5 4 3 2 1 0 1 2 3 4 5 6 7 8 9 10 11 12 13 14 15 16
NM FROM THR RWY 27

OCA (H)	A	B	C	D	Ideal Altitude(Height) Final Approach ICK DME	7NM	6NM	5NM	4NM	3NM	2NM	
						2720(2055)	2401(1736)	2100(1435)	1765(1100)	1446(781)	1127(462)	
Straight - in Approach	CAT I	810(145)	810(145)	820(155)	830(165)	Ground Speed Kts	70	90	100	120	140	160
	CAT II	715 (50)	725 (60)	740 (75)	755 (90)	Rate of descent Gradient 3° ft/min	383	492	547	656	766	875
LLZ only GP INOP						Rate of climb missed approach 2.5%						
CIRCLING	1060(395)	1160(495)	1260(595)	1360(695)	Ground Speed Kts	60	80	100	120	140	150	
					Rate of climb Gradient 2.5% FT/MIN	152	203	254	304	355	380	