

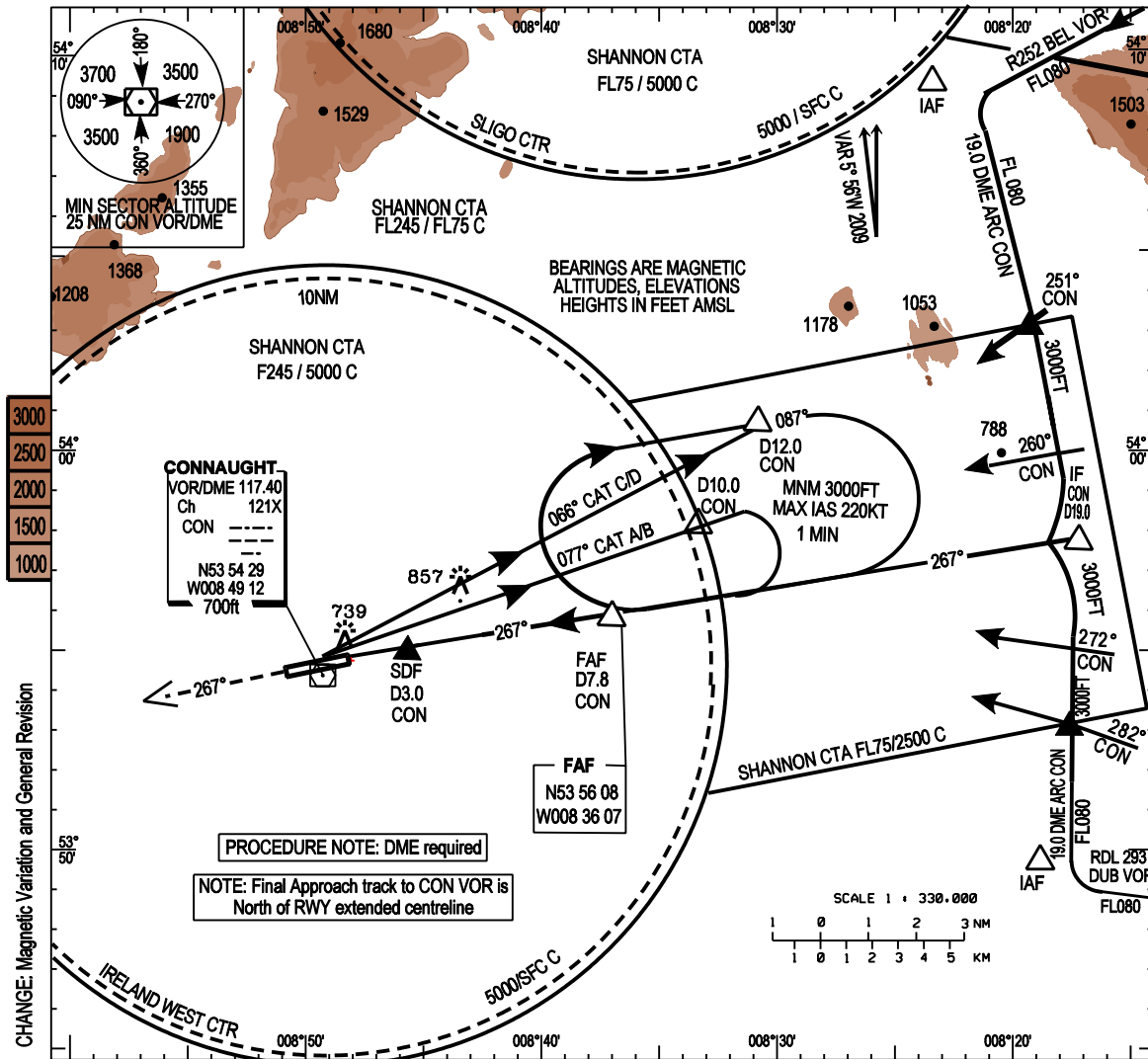
**INSTRUMENT APPROACH CHART - ICAO**

**AERODROME ELEV 665ft**  
 HEIGHTS RELATED TO THR RWY 27 - ELEV 665ft

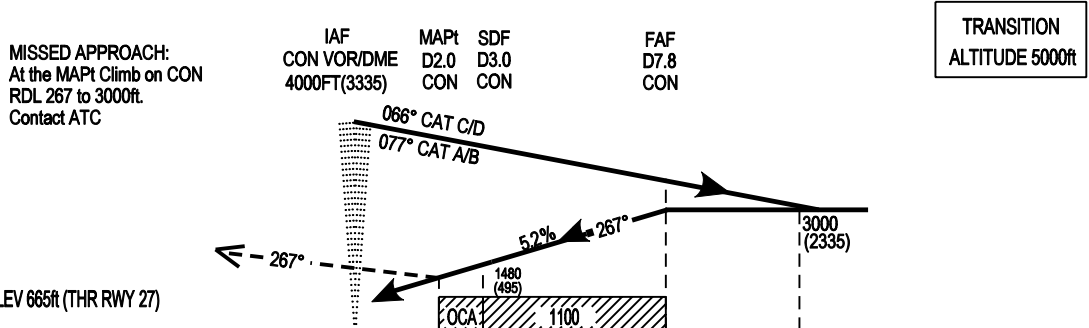
TWR 130.7  
 GND 121.9  
 Emerg 121.5

CONSULT NOTAM FOR LATEST INFORMATION

**IRELAND WEST / KNOCK VOR RWY 27**  
 (ACFT CAT A,B,C,D)



Mapping based on Ordnance Survey Ireland by Permission of the Government © Government of Ireland Permit Number 7109



7 6 5 4 3 2 1 0 1 2 3 4 5 6 7 8 9 10 11 12 13 14 15 16													
NM FROM THR RWY 27													
OCA (H)	A	B	C	D	Ideal Altitude / Height on Final Approach								
Straight - in Approach	← 1100 (435) →				D7 CON	D6 CON	D5 CON	D4 CON	D3 CON				
					2750 (2085)	2430 (1765)	2110 (1445)	1790 (1125)	1470 (805)				
CIRCLING	1060(395)	1160(495)	1260(595)	1360(695)	Rate of Decent - 5.2% (3°), 318 ft / NM		Kts	70	90	100	120	140	160
							FT / MIN	370	480	530	640	740	850