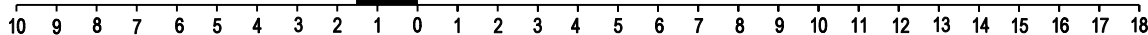
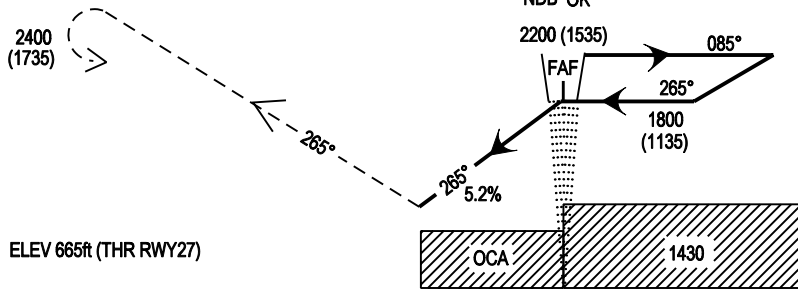


MISSED APPROACH:
 At the MAPt, climb on track 265° to 2400ft (1735'), turn left and return to OK holding pattern, contact ATC.



		NM FROM THR RWY 27										
OCA (H)	A	B	C	D	Time FAF to MAPt 3.67NM	Min:Sec	3:08	2:26	2:12	1:50	1:34	1:22
STRAIGHT-IN APPROACH	← 1010 (345) →				Ground Speed	Kts	70	90	100	120	140	160
VISUAL MANOEUVRING (These heights are AAL)	1060 (395)	1160 (495)	1260 (595)	1360 (695)	Descent Rate-5.2% (3°), 318ft/NM	ft/min	368	474	527	632	737	842