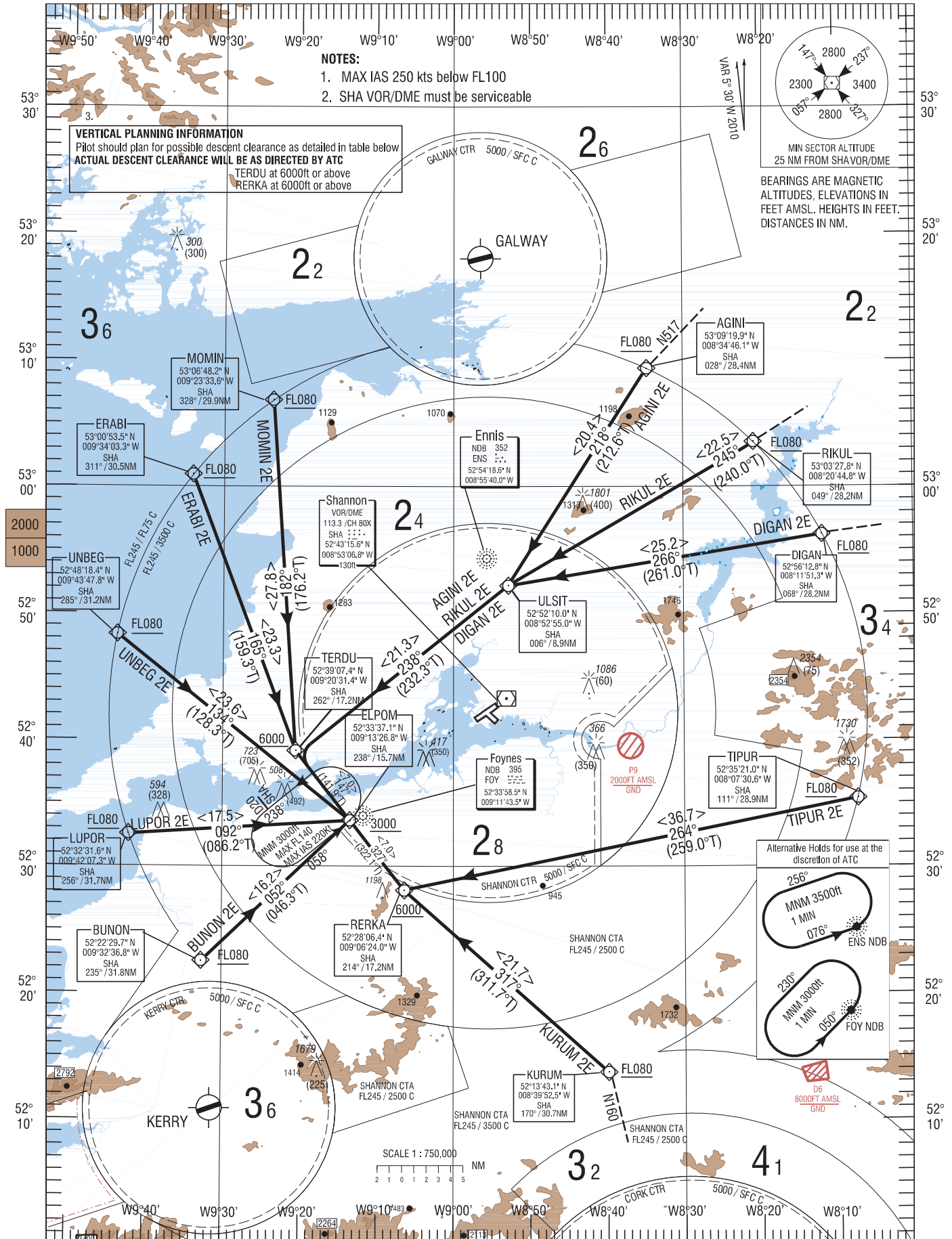


| | |
|------|--------|
| GND | 121.8 |
| ATIS | 130.95 |
| TWR | 118.7 |
| APP | 121.4 |

AGINI 2E, RIKUL 2E, DIGAN 2E, TIPUR 2E, KURUM 2E,
BUNON 2E, LUPOR 2E, UNBEG 2E, ERABI 2E, MOMIN 2E.



CHANGE: New STAR AGINI 2E, remove ENIRI 1F, revision all STARs, MAG VAR.
New Points TERDU, RERKA, ELPOM. Remove RERKI, TERBU, ASDIR.

| Path Terminator | Waypoint Name | Fly Over | Course 0M (0T) | Turn Direction | Altitude | Speed Limit (Kt) | Recommended Navaid | Bearing/ Range to Navaid |
|----------------------------|---------------|----------|-------------------|----------------|----------|------------------|-----------------------|-----------------------------|
| DIGAN2E STAR RWY06 | | | | | | | | |
| IF | DIGAN | | | | +FL080 | | SHA | 068/28.2 |
| TF | ULSIT | | 266 (261.0) | | | | | |
| TF | TERDU | | 238 (232.3) | | +6000 | | | |
| TF | ELPOM | | 147 (141.9) | | +3000 | 220 | | |
| RIKUL2E STAR RWY06 | | | | | | | | |
| IF | RIKUL | | | | +FL080 | | SHA | 049/28.2 |
| TF | ULSIT | | 245 (240.0) | | | | | |
| TF | TERDU | | 238 (232.3) | | +6000 | | | |
| TF | ELPOM | | 147 (141.9) | | +3000 | 220 | | |
| AGINI 2E STAR RWY06 | | | | | | | | |
| IF | AGINI | | | | +FL080 | | SHA | 028/28.4 |
| TF | ULSIT | | 218 (212.6) | | | | | |
| TF | TERDU | | 238 (232.3) | | +6000 | | | |
| TF | ELPOM | | 147 (141.9) | | +3000 | 220 | | |
| MOMIN2E STAR RWY06 | | | | | | | | |
| IF | MOMIN | | | | +FL080 | | SHA | 328/29.9 |
| TF | TERDU | | 182 (176.2) | | +6000 | | | |
| TF | ELPOM | | 147 (141.9) | | +3000 | 220 | | |
| ERABI2E STAR RWY06 | | | | | | | | |
| IF | ERABI | | | | +FL080 | | SHA | 311/30.5 |
| TF | TERDU | | 165 (159.3) | | +6000 | | | |
| TF | ELPOM | | 147 (141.9) | | +3000 | 220 | | |
| UNBEG2E STAR RWY06 | | | | | | | | |
| IF | UNBEG | | | | +FL080 | | SHA | 285/31.2 |
| TF | ELPOM | | 134 (128.3) | | +3000 | 220 | | |
| LUPOR2E STAR RWY06 | | | | | | | | |
| IF | LUPOR | | | | +FL080 | | SHA | 256/31.7 |
| TF | ELPOM | | 092 (086.2) | | +3000 | 220 | | |
| BUNON2E STAR RWY06 | | | | | | | | |
| IF | BUNON | | | | +FL080 | | SHA | 235/31.8 |
| TF | ELPOM | | 052 (046.3) | | +3000 | 220 | | |
| KURUM2E STAR RWY06 | | | | | | | | |
| IF | KURUM | | | | +FL080 | | SHA | 170/30.7 |
| TF | RERKA | | 317 (311.7) | | +6000 | | | |
| TF | ELPOM | | 327 (322.1) | | +3000 | 220 | | |
| TIPUR2E STAR RWY06 | | | | | | | | |
| IF | TIPUR | | | | +FL080 | | SHA | 111/28.9 |
| TF | RERKA | | 264 (259.0) | | +6000 | | | |
| TF | ELPOM | | 327 (322.1) | | +3000 | 220 | | |