

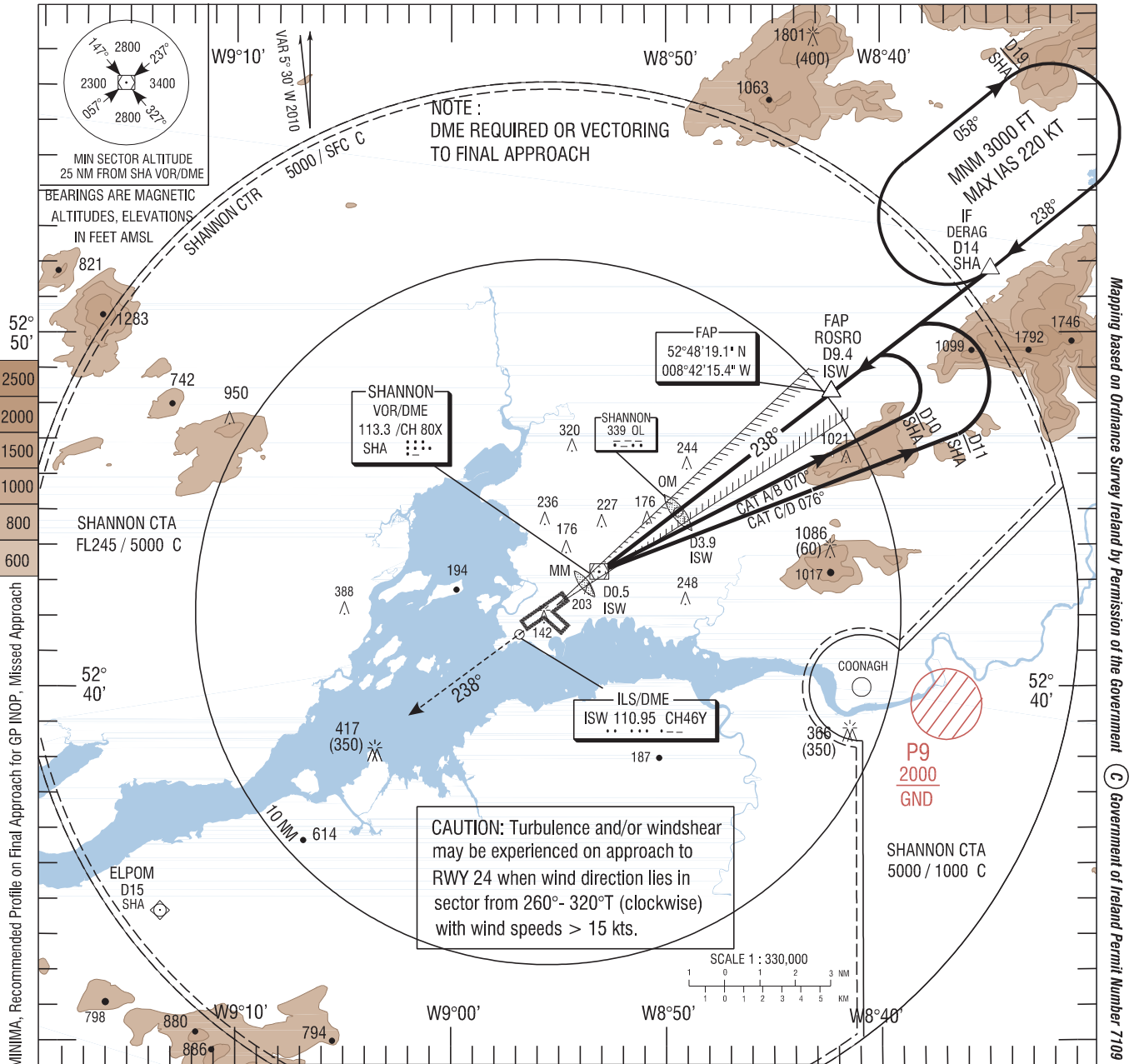
INSTRUMENT APPROACH CHART- ICAO

AERODROME ELEV 46 ft  
HEIGHTS RELATED TO THR  
RWY 24 - ELEV 15 ft

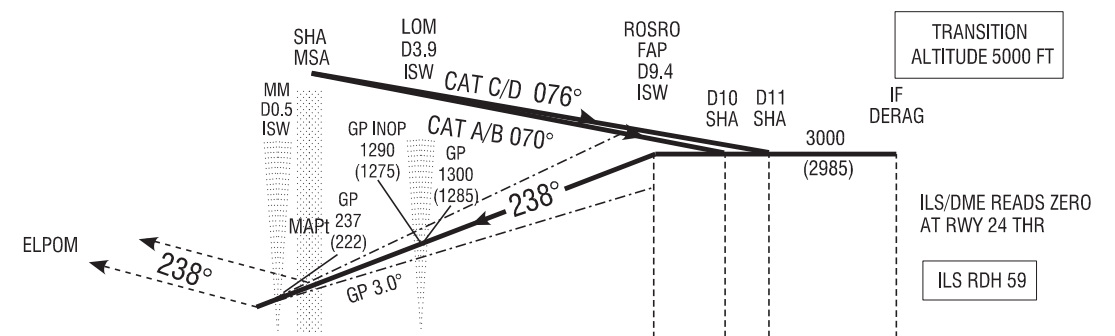
TWR 118.7  
APP 121.4  
GND 121.8  
ATIS 130.95

CONSULT NOTAM FOR LATEST INFORMATION

SHANNON/SHANNON  
ILS CAT I AND II OR LOC RWY 24  
(ACFT CAT A, B, C, D)



MISSED APPROACH:  
Climb straight ahead to ELPOM 3000 (2985) FT and contact ATC.  
  
CHANGE: MAG VAR, BASE TURN, VMA, MSA, MINIMA, Recommended Profile on Final Approach for GP INOP, Missed Approach



|   |           |               |           |   |           |                                    |             |             |             |             |             |             |                    |     |     |  |
|---|-----------|---------------|-----------|---|-----------|------------------------------------|-------------|-------------|-------------|-------------|-------------|-------------|--------------------|-----|-----|--|
| 6 5 4 3 2 1 0 1 2 3 4 5 6 7 8 9 10 11 12 13 14 15 |           |               |           |   |           |                                    |             |             |             |             |             |             | NM FROM THR RWY 24 |     |     |  |
| OCA (H)   |           |               |           | Recommended Profile on Final Approach for GP INOP |           |                                    |             |             |             |             |             |             |                    |     |     |  |
| Straight - in Approach                            | CAT I     | 154 (139)     | 165 (150) | 177 (162)   | 191 (176) | D9 ISW                             | D8 ISW      | D7 ISW      | D6 ISW      | D5 ISW      | D4 ISW      | D3 ISW      | D2 ISW             |     |     |  |
|   | CAT II    | 63 (48)       | 74 (59)   | 87 (72)   | 99 (84)   | 2940 (2925)                        | 2620 (2605) | 2305 (2290) | 1985 (1970) | 1665 (1650) | 1350 (1335) | 1030 (1015) | 710 (695)          |     |     |  |
|   | GP INOP   | ← 460 (445) → |           |   |           | Descent Rate 5.24%, (3°), 318ft/NM |             |             |             | fts         | 80          | 100         | 120                | 140 | 160 |  |
| VISUAL MANOEUVRING (These heights are AAL)        | 500 (454) | 540 (494)     | 720 (674) | 800 (754)   |           |                                    |             |             | ft / min    | 425         | 530         | 635         | 745                | 850 |     |  |