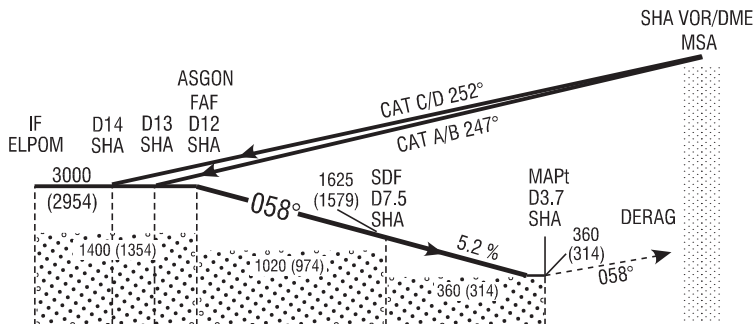


TRANSITION ALTITUDE 5000 ft



MISSED APPROACH:  
At MAPt climb straight ahead to DERAG at 3000 (2954)ft and contact ATC.

ELEV 46ft (THR RWY 06)

NM FROM THR 06	15	14	13	12	11	10	9	8	7	6	5	4	3	2	1	0	1	2	3	4	5	6	7	8	9	10				
OCA (H)	A				B				C				D				Ideal Altitude/Height on Final Approach													
Straight - in Approach	← 360 (314) →																D11 SHA	D10 SHA	D9 SHA	D8 SHA	D7 SHA	D6 SHA	D5 SHA	D4 SHA						
																	2735 (2689)	2420 (2374)	2100 (2054)	1780 (1734)	1460 (1414)	1145 (1099)	825 (779)	510 (464)						
VISUAL MANOEUVRING (These heights are AAL)	500 (454)				540 (494)				720 (674)				800 (754)				Descent Rate 5.24%, (3°), 318ft/NM													
																	kts		80	100	120	140	160							
																ft / min		425	530	635	745	850								