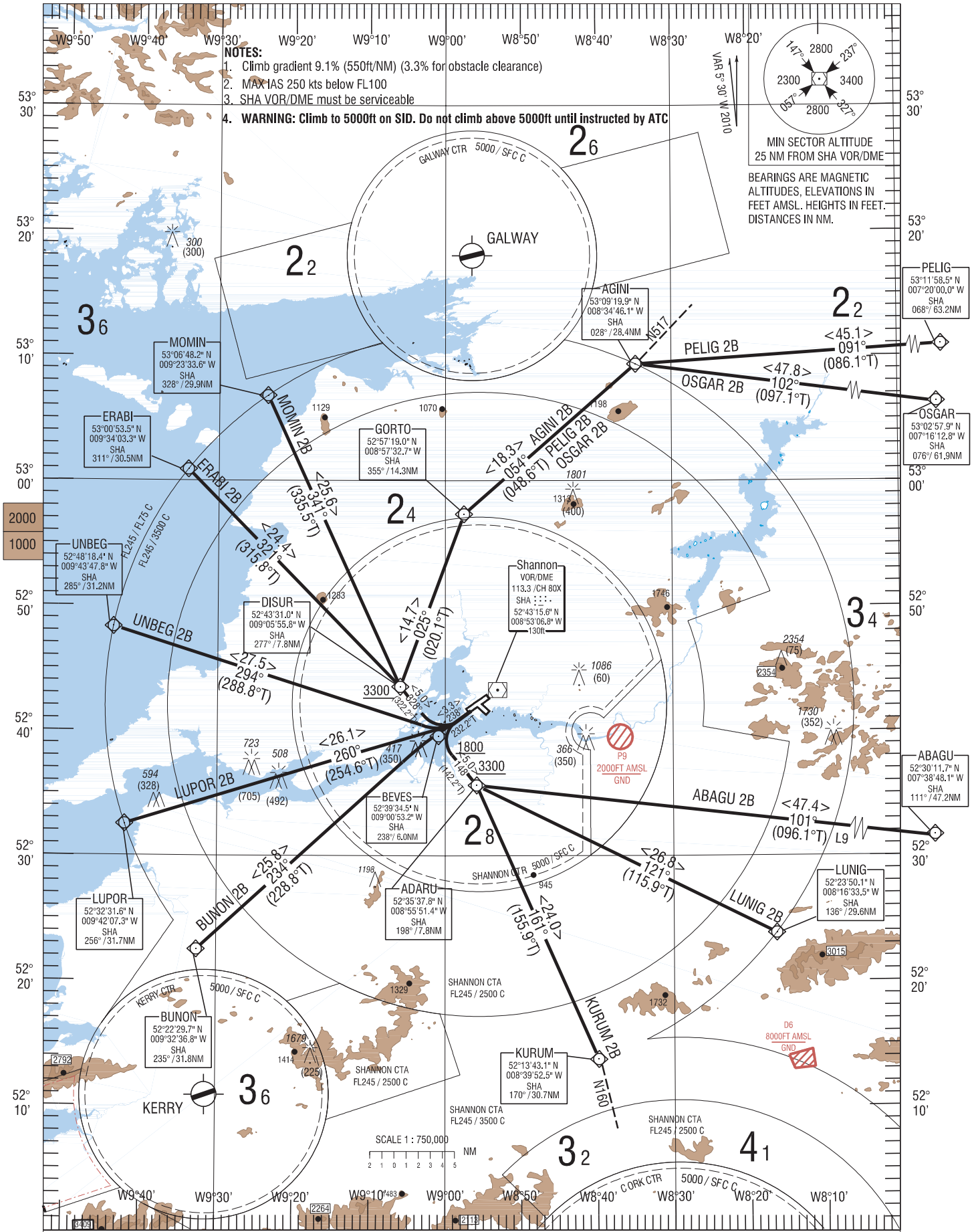


RNAV STANDARD DEPARTURE CHART TRANS ALT 5000ft
INSTRUMENT (SID) - ICAO TRANS LEVEL by ATC

GND	121.8
ATIS	130.95
TWR	118.7
APP	121.4

SHANNON RWY 24

AGINI 2B, ABAGU 2B, KURUM 2B, BUNON 2B, LUPOR 2B, UNBEG 2B, ERABI 2B, MOMIN 2B, PELIG 2B, OSGAR 2B, LUNIG 2B.



CHANGE: Revision to SIDs, MSA, MAG VAR. Withdrawal RINUS 1B, KORAK 1B, new SID AGINI 2B.

Path Terminator	Waypoint Name	Fly Over	Course 0M (0T)	Turn Direction	Altitude	Speed Limit (Kt)	Recommended Navaid	Bearing/ Range to Navaid
OSGAR 2B SID RWY 24								
FA	RWY24		238 (232.2)		+ 446		SHA	
DF	BEVES				+1800		SHA	238/6.0
TF	DISUR		328 (322.2)	R	+3300			
TF	GORTO		025 (020.1)					
TF	AGINI		054 (048.6)				SHA	028/28.4
TF	OSGAR		102 (97.1)					
PELIG 2B SID RWY 24								
FA	RWY24		238 (232.2)		+ 446		SHA	
DF	BEVES				+1800		SHA	238/6.0
TF	DISUR		328 (322.2)	R	+3300			
TF	GORTO		025 (020.1)					
TF	AGINI		054 (048.6)				SHA	028/28.4
TF	PELIG		091(086.1)					
AGINI2B SID RWY24								
FA	RWY24		238 (232.2)		+ 446		SHA	
DF	BEVES				+1800		SHA	238/6.0
TF	DISUR		328 (322.2)	R	+3300			
TF	GORTO		025 (020.1)					
TF	AGINI		054 (048.6)				SHA	028/28.4
MOMIN2B SID RWY24								
FA	RWY24		238 (232.2)		+ 446		SHA	
DF	BEVES				+1800		SHA	238/6.0
TF	DISUR		328 (322.2)	R	+3300			
TF	GORTO		025 (020.1)					
TF	MOMIN		341 (335.5)				SHA	328/29.9
ERABI2B SID RWY24								
FA	RWY24		238 (232.2)		+ 446		SHA	
DF	BEVES				+1800		SHA	238/6.0
TF	DISUR		328 (322.2)	R	+3300			
TF	ERABI		321 (315.8)				SHA	311/30.5
UNBEG2B SID RWY24								
FA	RWY24		238 (232.2)		+ 446		SHA	
DF	BEVES				+1800		SHA	238/6.0
TF	UNBEG		294 (288.8)				SHA	285/31.2
LUPOR2B SID RWY24								
FA	RWY24		238 (232.2)		+ 446		SHA	
DF	BEVES				+1800		SHA	238/6.0
TF	LUPOR		260 (254.6)				SHA	256/31.7
BUNON2B SID RWY24								
FA	RWY24		238 (232.2)		+ 446		SHA	
DF	BEVES				+1800		SHA	238/6.0
TF	BUNON		234 (228.8)				SHA	235/31.8
KURUM2B SID RWY24								
FA	RWY24		238 (232.2)		+ 446		SHA	
DF	BEVES				+1800		SHA	238/6.0
TF	ADARU		148 (142.2)	L	+3300			
TF	KURUM		161 (155.9)				SHA	170/30.7
LUNIG 2B SID RWY 24								
FA	RWY24		238 (232.2)		+ 446		SHA	
DF	BEVES				+1800		SHA	238/6.0
TF	ADARU		148 (142.2)	L	+3300			
TF	LUNIG		121 (115.9)				SHA	136/29.6
ABAGU2B SID RWY24								
FA	RWY24		238 (232.2)		+ 446		SHA	
DF	BEVES				+1800		SHA	238/6.0
TF	ADARU		148 (142.2)	L	+3300		SHA	198/7.8
TF	ABAGU		101 (96.1)					