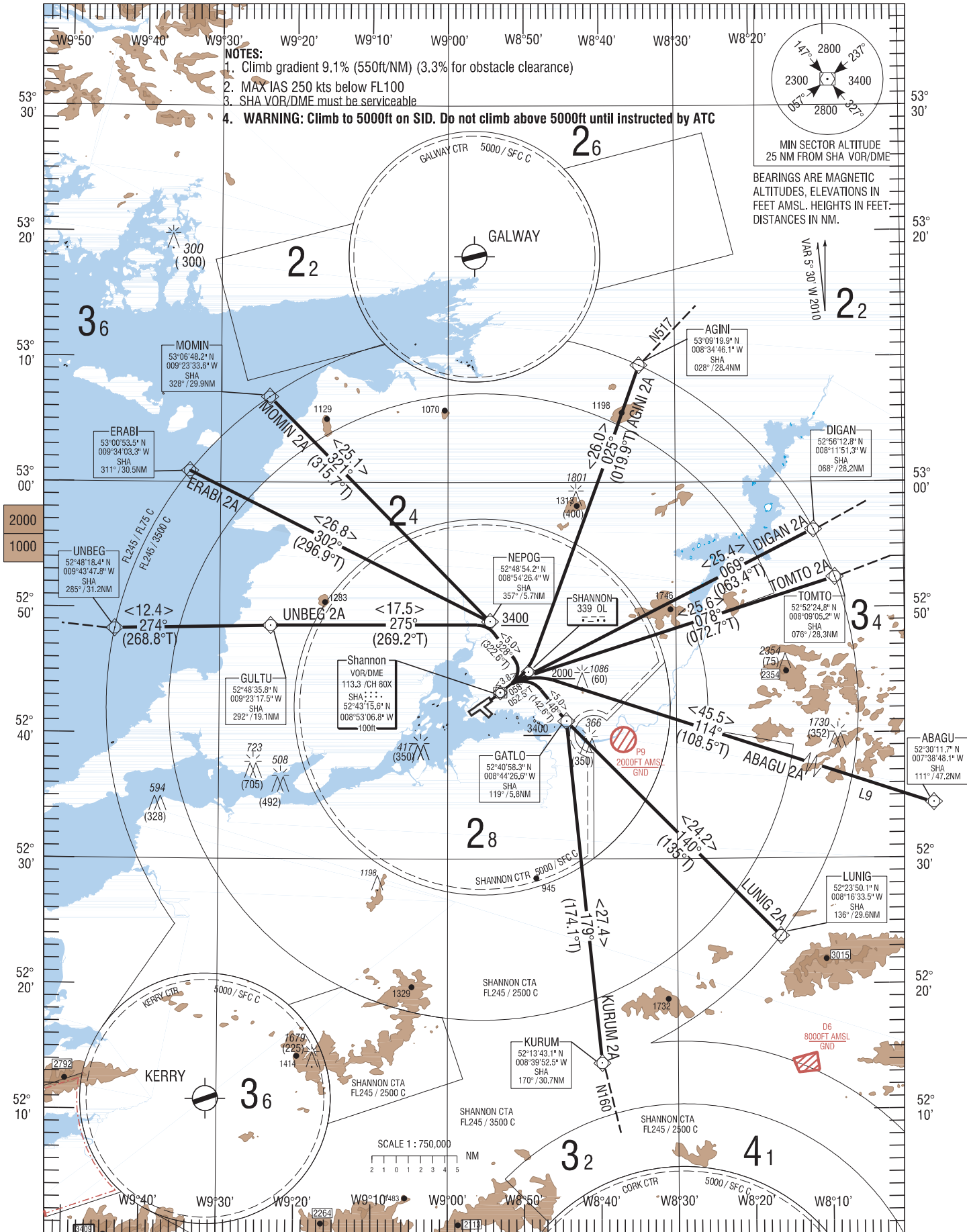


RNAV STANDARD DEPARTURE CHART TRANS ALT 5000ft INSTRUMENT (SID) - ICAO TRANS LEVEL by ATC

GND	121.8
ATIS	130.95
TWR	118.7
APP	121.4

SHANNON RWY 06

UNBEG 2A, ERABI 2A, MOMIN 2A, AGINI 2A, DIGAN 2A, TOMTO 2A, ABAGU 2A, KURUM 2A, LUNIG 2A.



CHANGE: Revision to SIDs, MSA, MAG VAR. Withdrawal of GIPER 1A, DOLIP 1A, ENIRI 1A, RIKUL 1A. New SID AGINI 2A.

Path Terminator	Waypoint Name	Fly Over	Course 0M (0T)	Turn Direction	Altitude	Speed Limit (Kt)	Recommended Navaid	Bearing/ Range to Navaid
<b>UNBEG2A SID RWY06</b>								
FA	RWY06		058 (052.5)		+ 446		SHA	
DF	OL				+2000		SHA	058/2.8
TF	NEPOG		328 (322.6)	L	+3400			
TF	GULTU		275 (269.2)				SHA	292/19.1
TF	UNBEG		274 (268.8)					
<b>ERABI2A SID RWY06</b>								
FA	RWY06		058 (052.5)		+ 446		SHA	
DF	OL				+2000		SHA	058/2.8
TF	NEPOG		328 (322.6)	L	+3400			
TF	ERABI		302 (296.9)				SHA	311/30.5
<b>MOMIN2A SID RWY06</b>								
FA	RWY06		058 (052.5)		+ 446		SHA	
DF	OL				+2000		SHA	058/2.8
TF	NEPOG		328 (322.6)	L	+3400			
TF	MOMIN		321 (315.7)				SHA	328/29.9
<b>AGINI2A SID RWY06</b>								
FA	RWY06		058 (052.5)		+ 446		SHA	
DF	OL				+2000		SHA	058/2.8
TF	AGINI		025(019.9)				SHA	028/028.4
<b>DIGAN2A SID RWY06</b>								
FA	RWY06		058 (052.5)		+ 446		SHA	
DF	OL				+2000		SHA	058/2.8
TF	DIGAN		069(063.4)				SHA	068/28.2
<b>TOMTO2A SID RWY06</b>								
FA	RWY06		058 (052.5)		+ 446		SHA	
DF	OL				+2000		SHA	058/2.8
TF	TOMTO		078 (072.7)				SHA	076/28.3
<b>ABAGU2A SID RWY06</b>								
FA	RWY06		058 (052.5)		+ 446		SHA	
DF	OL				+2000		SHA	058/2.8
TF	ABAGU		114 (108.5)					111/47.2
<b>KURUM2A SID RWY06</b>								
FA	RWY06		058 (052.5)		+ 446		SHA	
DF	OL				+2000		SHA	058/2.8
TF	GATLO		148 (142.6)	R	+3400			
TF	KURUM		179 (174.1)				SHA	170/30.7
<b>LUNIG2A SID RWY 06</b>								
FA	RWY06		058 (052.5)		+ 446		SHA	
DF	OL				+2000		SHA	058/2.8
TF	GATLO		148 (142.6)	R	+3400			
TF	LUNIG		140 (135.0)				SHA	136/29.6