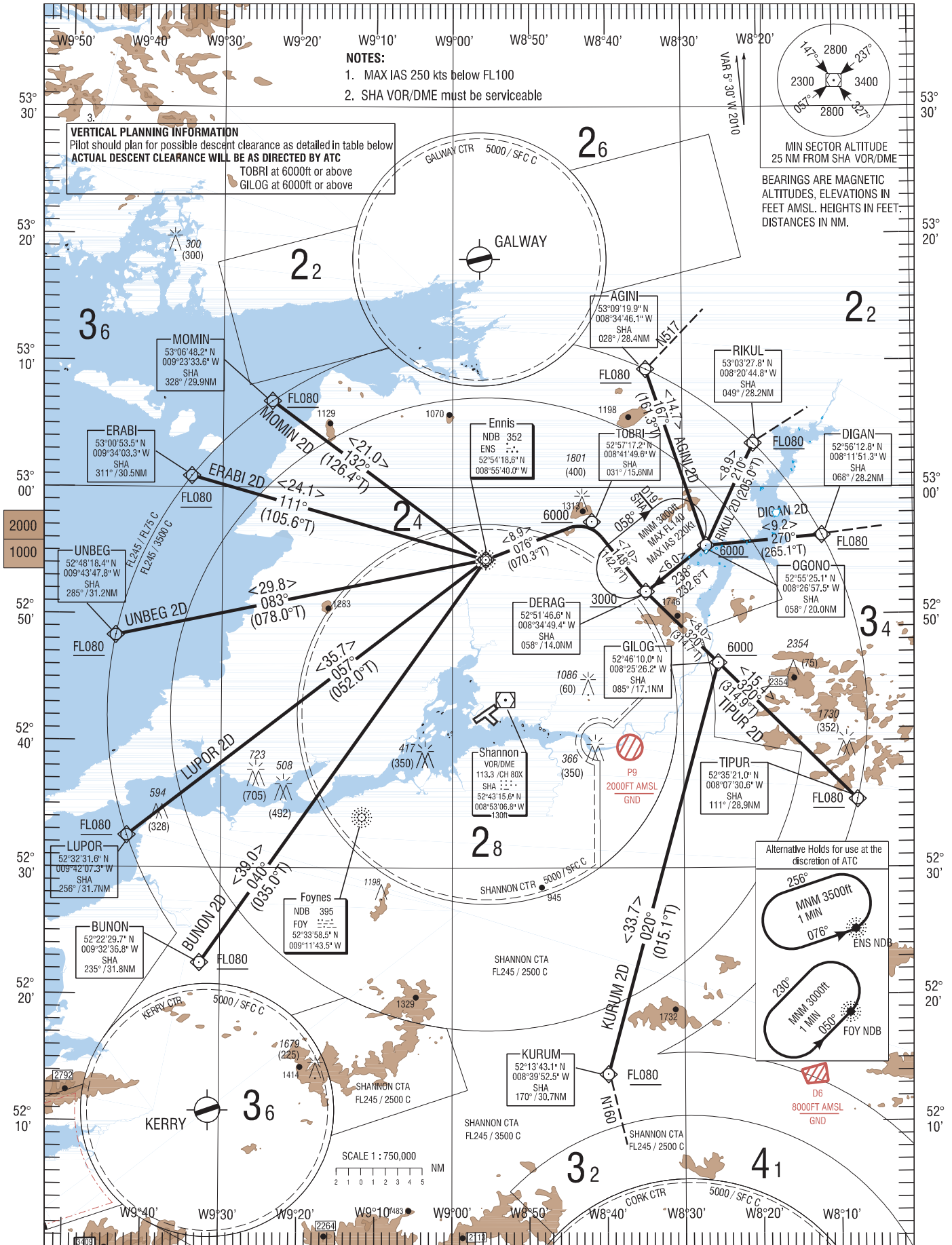


GND	121.8
ATIS	130.95
TWR	118.7
APP	121.4

AGINI 2D, RIKUL 2D, DIGAN 2D, TIPUR 2D, KURUM 2D,
BUNON 2D, LUPOR 2D, UNBEG 2D, ERABI 2D, MOMIN 2D.



CHANGE: NEW STAR AGINI 2D, REMOVE ENRI 1D, GENERAL REVISION, MAG VAR.

Path Terminator	Waypoint Name	Fly Over	Course 0M (0T)	Turn Direction	Altitude	Speed Limit (Kt)	Recommended Navaid	Bearing/ Range to Navaid
BUNON2D STAR RWY24								
IF	BUNON				+FL080		SHA	235/31.8
TF	ENS		040 (035.0)					
TF	TOBRI		076 (070.3)		+6000			
TF	DERAG		148 (142.4)		+3000	220		
LUPOR2D STAR RWY24								
IF	LUPOR				+FL080		SHA	256/31.7
TF	ENS		057 (52.0)					
TF	TOBRI		076 (070.3)		+6000			
TF	DERAG		148 (142.4)		+3000	220		
UNBEG2D STAR RWY24								
IF	UNBEG				+FL080		SHA	285/31.2
TF	ENS		083 (078.0)					
TF	TOBRI		076 (070.3)		+6000			
TF	DERAG		148 (142.4)		+3000	220		
ERABI2D STAR RWY24								
IF	ERABI				+FL080		SHA	311/30.5
TF	ENS		111 (105.6)					
TF	TOBRI		076 (070.3)		+6000			
TF	DERAG		148 (142.4)		+3000	220		
MOMIN2D STAR RWY24								
IF	MOMIN				+FL080		SHA	328/29.9
TF	ENS		132 (126.4)					
TF	TOBRI		076 (070.3)		+6000			
TF	DERAG		148 (142.4)		+3000	220		
AGINI2D STAR RWY24								
IF	AGINI				+FL080		SHA	028/28.4
TF	OGONO		167 (161.3)		+6000			
TF	DERAG		238 (232.6)		+3000	220		
RIKUL2D STAR RWY24								
IF	RIKUL				+FL080		SHA	049/28.2
TF	OGONO		210 (205.0)		+6000			
TF	DERAG		238 (232.6)		+3000	220		
DIGAN2D STAR RWY24								
IF	DIGAN				+FL080		SHA	068/28.2
TF	OGONO		270 (265.1)		+6000			
TF	DERAG		238 (232.6)		+3000	220		
TIPUR2D STAR RWY24								
IF	TIPUR				+FL080		SHA	111/28.9
TF	GILOG		320 (314.9)		+6000			
TF	DERAG		320 (314.7)		+3000	220		
KURUM2D STAR RWY24								
IF	KURUM				+FL080		SHA	170/30.7
TF	GILOG		020 (015.1)		+6000			
TF	DERAG		320 (314.7)		+3000	220		