

INSTRUMENT APPROACH CHART- ICAO

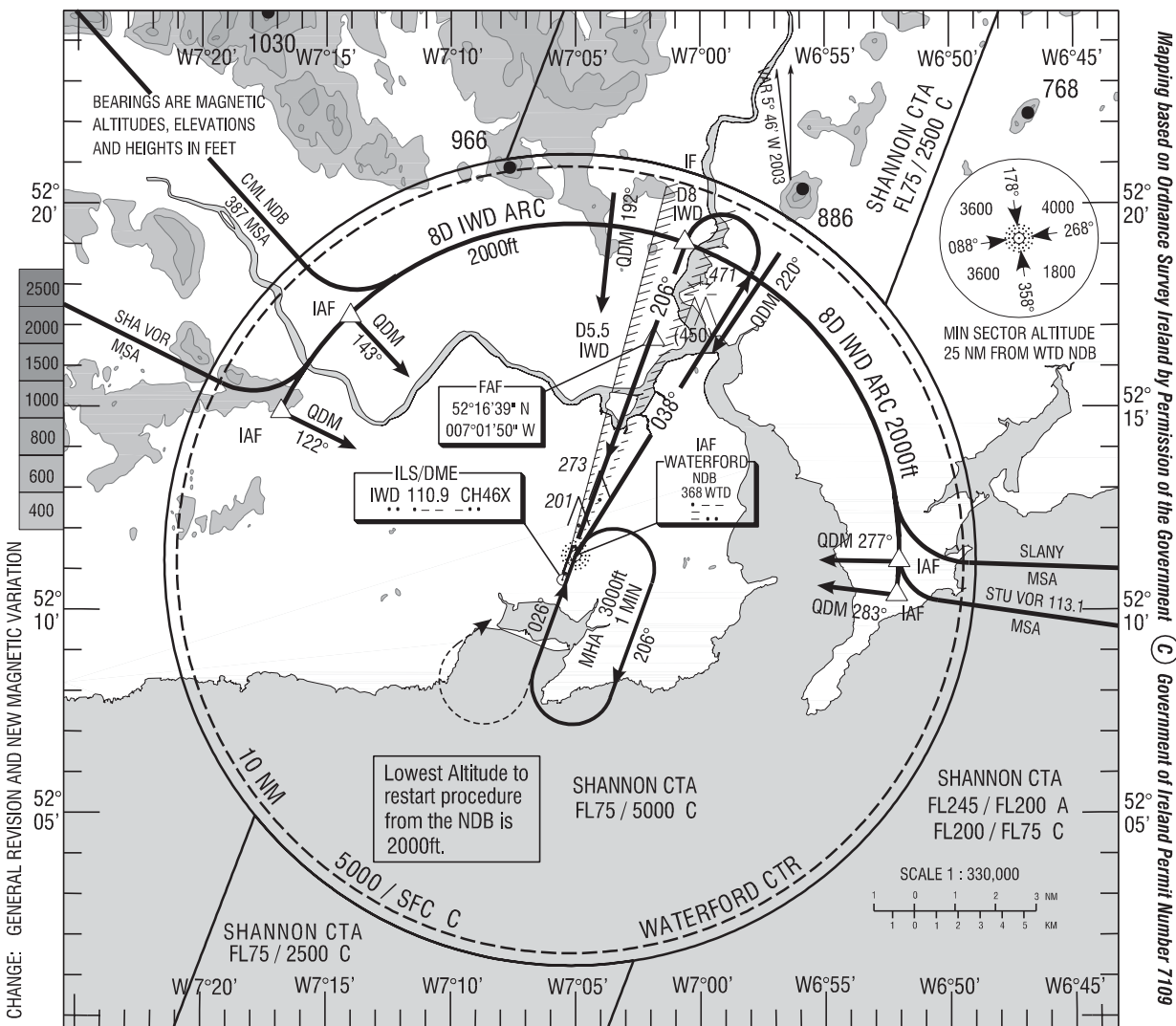
AERODROME ELEV 119 ft
 HEIGHTS RELATED TO THR
 RWY 21 - ELEV 113 ft

Tower 129.85
 ATIS 121.15
 Shannon 124.7

CONSULT NOTAM FOR LATEST INFORMATION

WATERFORD / WATERFORD ILS/NDB/DME RWY 21
 (ACFT CAT A, B)

PROCEDURE NOT AVAILABLE WITHOUT DME

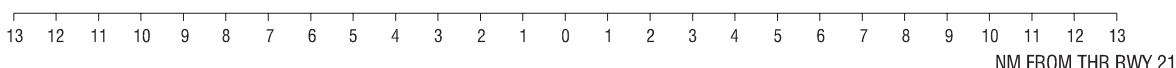
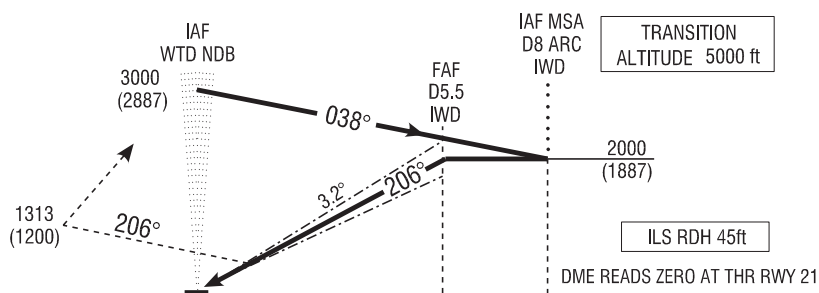


CHANGE: GENERAL REVISION AND NEW MAGNETIC VARIATION

Mapping based on Ordnance Survey Ireland by Permission of the Government of Ireland Permit Number 7109

MISSED APPROACH: Climb straight ahead. At 1313 (1200)ft or 3 DME IWD whichever is later climbing right turn to return to WTD NDB at 2000(1887)ft, or as directed.

ELEV 113ft (THR RWY 21)



OCA (H)		A	B	Note: Instrument approaches only available when Air Traffic Control Zone is active unless authorised by the Operating Standards Dept of the Irish Aviation Authority.	FINAL APPROACH - 3.2° (5.6%), 343ft / NM						
Straight - in Approach	CAT 1	276 (163)	284 (171)		Ground speed	kts	70	80	100	120	140
	Visual Manoeuvring	590 (471)	690 (571)		Rate of descent	ft / min	400	450	570	680	790