

**INSTRUMENT APPROACH CHART- ICAO**

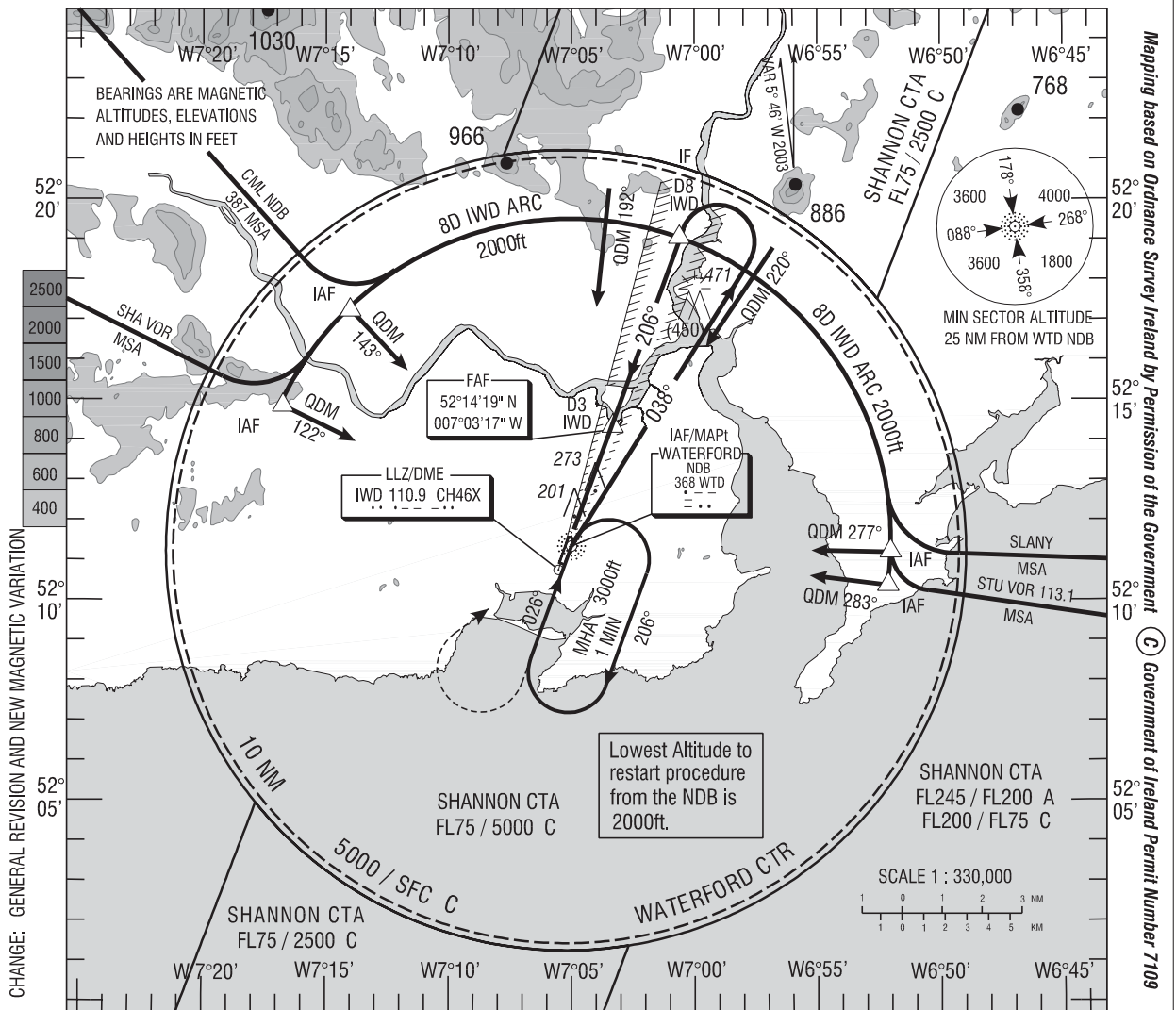
**AERODROME ELEV 119 ft**  
 HEIGHTS RELATED TO THR  
 RWY 21 - ELEV 113 ft

Tower 129.85  
 ATIS 121.15  
 Shannon 124.7

CONSULT NOTAM FOR LATEST INFORMATION

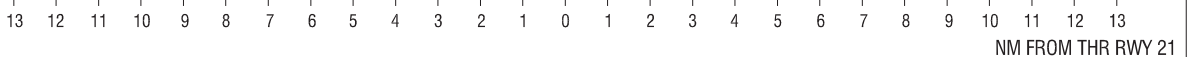
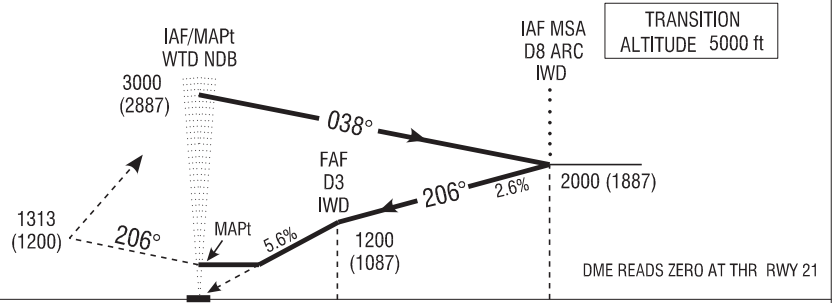
**WATERFORD / WATERFORD LLZ/NDB/DME RWY 21**  
 (ACFT CAT A, B)

PROCEDURE NOT AVAILABLE WITHOUT DME



**MISSED APPROACH:** At or before MAPt climb straight ahead. At 1313 (1200)ft or 3 DME IWD whichever is later climbing right turn to return to WTD NDB at 2000(1887)ft, or as directed.

ELEV 113ft (THR RWY 21)



OCA (H)	A	B	Note: Instrument approaches only available when Air Traffic Control Zone is active unless authorised by Operating Standards Dept of the Irish Aviation Authority	Recommended profile on Final Approach Descent Rate 5.6% (3.2°), 343ft / NM					
Straight - in Approach	520 (407)			DME	3 DME	2 DME	1 DME		
Visual Manoeuvring	590 (471)	690 (571)		ALT/HT	1200 (1087)	740 (627)	390 (277)		
				Ground speed	kts	70	80	100	120
			Rate of descent	ft / min	400	450	570	680	790