

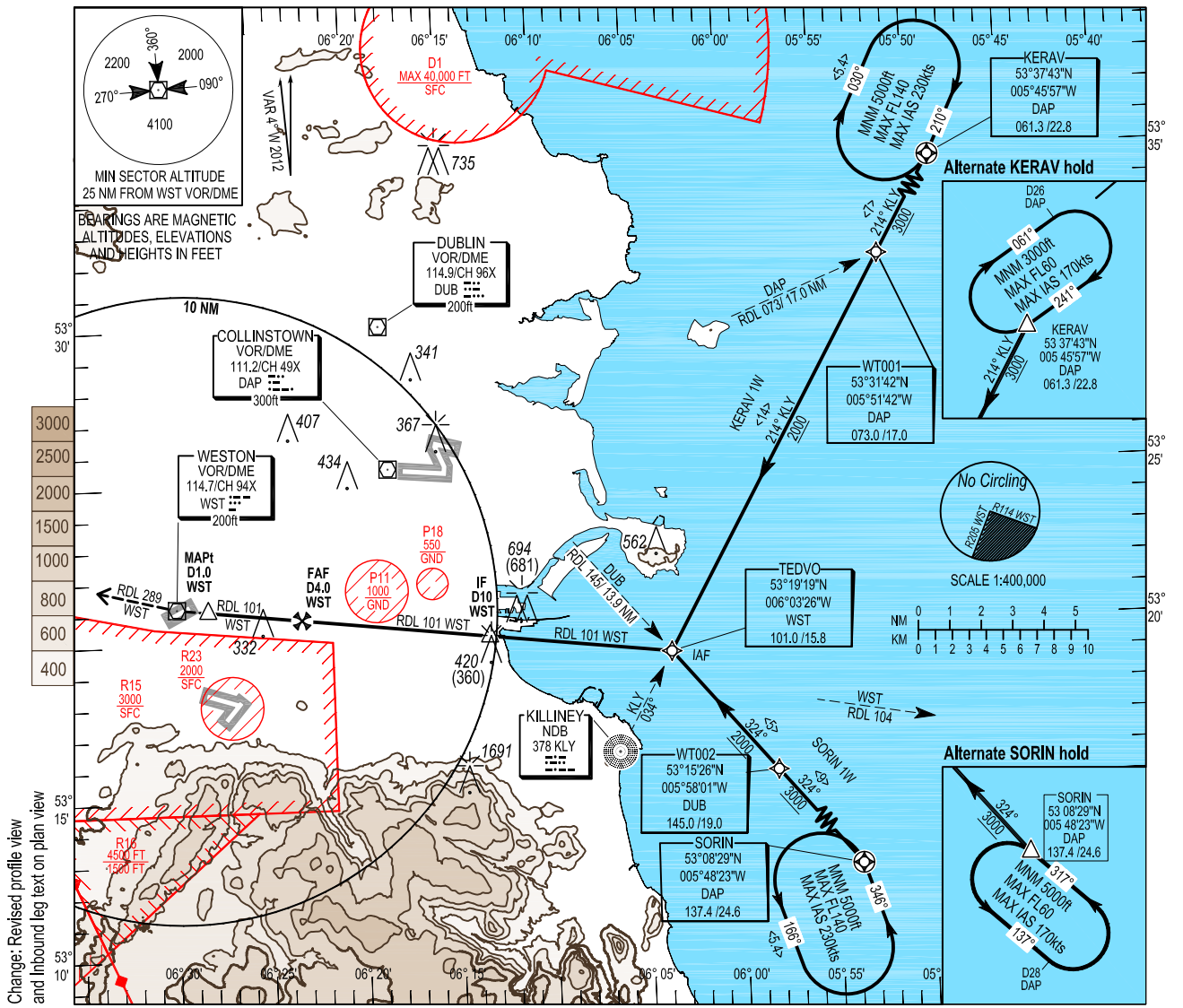
INSTRUMENT APPROACH CHART - ICAO

AERODROME ELEV 155 ft
 HEIGHTS RELATED TO AD - ELEV 155 ft

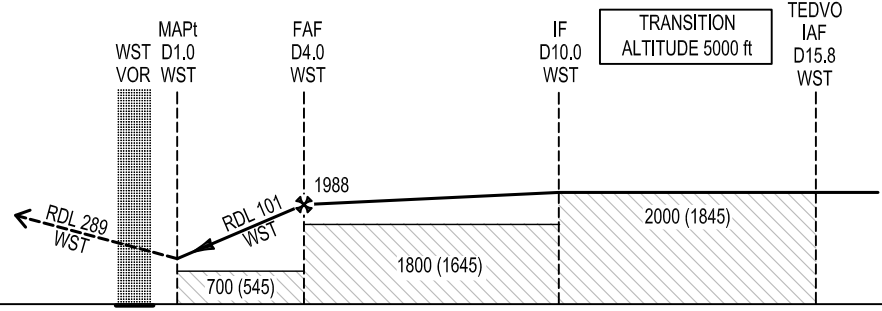
DUBLIN APP	121.100
WESTON TWR	122.400
WESTON GND	119.425
WESTON ATIS	118.875

CONSULT NOTAM FOR LATEST INFORMATION

WESTON / WESTON
 VOR - D (ACFT CAT A, B)



MISSED APPROACH:
 From the MAPt establish outbound on RDL 289 WST VOR/DME and contact Dublin APP 121.100. Climb to 2000 QNH.
 (In the event of radio failure, carry out the missed approach climbing to 5000 ft QNH and at D2 WST turn right to ULTAG (WST RDL 342/ 22.6 DME) to join the hold. From ULTAG complete the IAP to EIDW RWY16 (EIDW AD 2.24-22, 2.24-29, 2.24-30) to land or circle to land on the active RWY.)



ELEV 152 ft (THR RWY 25)	4	3	2	1	0	1	2	3	4	5	6	7	8	9	10	11	12	13	14	15	16	17	
ELEV 155 ft (THR RWY 07)																							
	NM from mid-point of Rwy 25/07																						

OCA (H)	A		B		
	6.0	5.0	4.0	3.0	2.0
VISUAL MANOEUVRING	700 (545)		800 (645)		
Recommended Profile on Final Approach					
DME	6.0	5.0	4.0	3.0	2.0
ALT (HT)	2642 (2487)	2314 (2159)	1988 (1833)	1663 (1508)	1340 (1185)
Descent Rate 6.0%, (3.4°), 365 ft/NM	kts		80	100	120
	ft / min		481	602	722

- NOTES:**
- DME/DME or GNSS required for initial approach or for NON-RNAV capable aircraft advise Dublin on first contact and use the Alternate KERAV and SORIN holds if necessary. Non RNAV aircraft may expect radar vectors to IAF
 - In the event of radio failure while under radar vectors fly the VOR-D procedure from KERAV or SORIN to the MAPt.
 - Expect visual landing instructions from ATC Weston.
 - No Circling SE of the RWY between RDL 114 and 205 WST.
 - Radar vectored aircraft from the South East on passing RDL 104 WST are to intercept RDL 101 WST inbound.

KERAV 1W RWY 07/25 VOR APPROACH

Navigation Performance	Path Terminator	WPT Name	Latitude Longitude	Fly-By or Fly-Over	Distance (NM)	True Track/ Magnetic Track	Upper Limit /Lower Limit	Speed Limits (kts)	Remarks
RNAV 1	IF	KERAV	533742.7N 0054557.3W	Fly-Over	-	-	-	-	-
RNAV 1	TF	WT001	533142.3N 0055141.6W	Fly-By	6.9	209.7 / 214	A3000+	-	-
RNAV 1	CF	TEDVO	531918.6N 0060326.2W	Fly-By	14.3	209.6 / 214	A2000+	-	-

SORIN 1W RWY 07/25 VOR APPROACH

Navigation Performance	Path Terminator	WPT Name	Latitude Longitude	Fly-By or Fly-Over	Distance (NM)	True Track / Magnetic Track	Upper Limit / Lower Limit	Speed Limits (kts)	Remarks
RNAV 1	IF	SORIN	530829.3N 0054822.5W	Fly-Over	-	-	-	-	-
RNAV 1	TF	WT002	531525.7N 0055800.7W	Fly-By	9.0	320.2 / 324	A3000+	-	-
RNAV 1	CF	TEDVO	531918.6N 0060326.2W	Fly-By	5.1	320.1 / 214	A2000+	-	-

RWY 07/25 VOR Initial, Intermediate and Final Approach

Descent Angle	3.00°			
Fix	IAF (TEDVO)	IF	FAF	MAPt
Fix coordinates	531918.6 N 0060326.2 W	532000.2 N 0061303.9 W	532042.4 N 0062300.3 W	532103.1 N 0062758.6 W
Fix formation Bearing °T	096.57 WST	096.57 WST	096.57 WST	096.57 WST
Fix Formation Distances	15.81 WST	10.00 WST	4.00 WST	1.00 WST

Holding identification EIWT AD 2.24.3-1

HOLDING FIX	LATITUDE LONGITUDE	INBOUND TRUE TRACK (degrees)	INBOUND MAGNETIC TRACK (degrees)	MAXIMUM INDICATED AIRSPEED (kts)	MAXIMUM / MINIMUM HOLDING ALTITUDE / LEVEL (FL/ft)	TIME/ DISTANCE OUTBOUND	DIRECTION OF TURN
KERAV	533742.7N 0054557.3W	205.5	210	230	F140/A5000	5.4 NM	R
SORIN	530829.3N 0054822.5W	342.4	346	230	F140/A5000	5.4 NM	L