

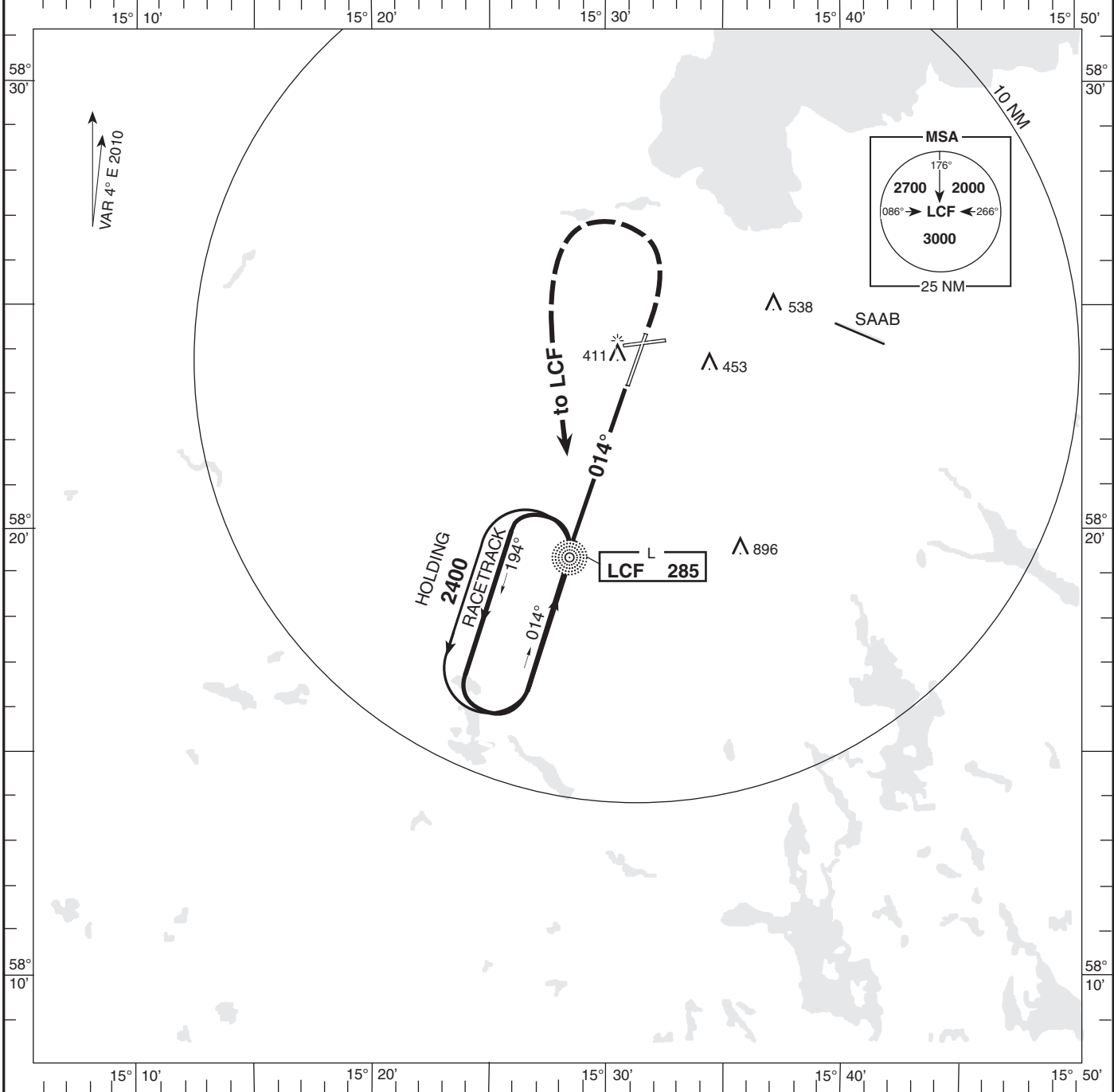
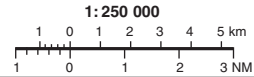
INSTRUMENT
APPROACH CHART-ICAO

THR ELEV 250 ft, AD ELEV 308 ft
HGT are related to THR.
Circling HGT are related to AD ELEV.
BRG are MAG.
ALT, HGT and ELEV in ft.

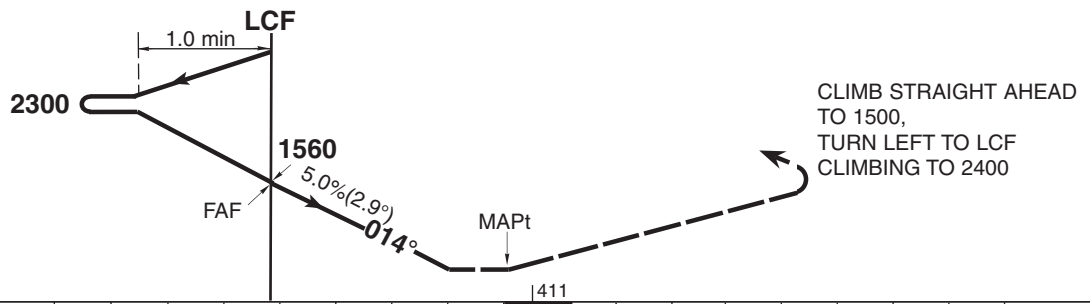
MALMEN TOWER 129.800
ÖSTGÖTA CONTROL 132.950
135.850

AD 2-ESCF-5-5

NDB RWY 01 (Cat H)
LINKÖPING/MALMEN
SWEDEN



TRANSITION ALTITUDE 5000 MSL



OCA (H)		Final approach Distance FAF-MAPt 4.1 NM				
Cat of ACFT	H	Distance DME CFB	DME 6	DME 5	DME 4	DME 3
Straight-in	660 (410)	ALT (HGT)	1820(1570)	1510(1260)	1210(960)	900(650)
Circling	N/A	Speed	kt	60	80	100
		Time	min:s	4:08	3:06	2:29
		Rate of decent	ft/min	305	405	505