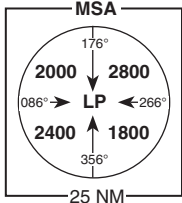


15° 00'

15° 30'

16° 00'

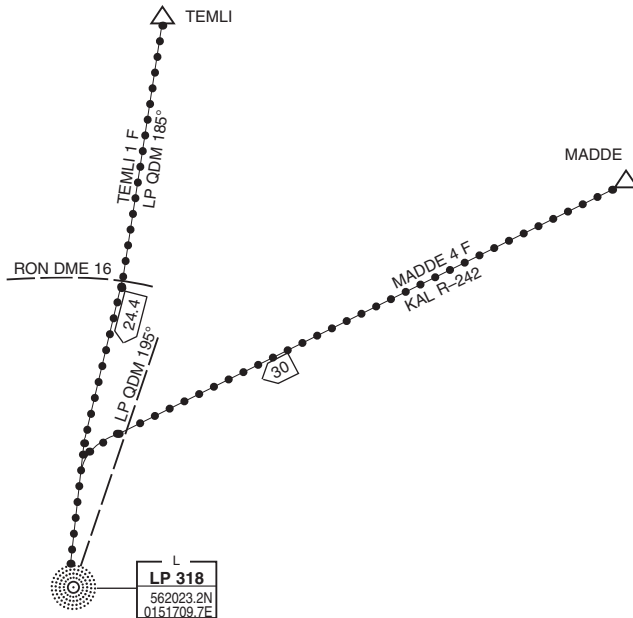
↑
VAR 4° E 2010



| | |
|----------------------|------------|
| VOR/DME KALMAR | |
| KAL | 111.60 |
| 53X | elev 26 ft |
| 564107.4N 0161703.1E | |

56° 30'

56° 30'



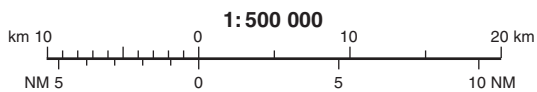
56° 00'

56° 00'

LEGEND

See GEN 2.3

BRG are MAG
ELEV and ALT in ft MSL



Description of TEMLI and MADDE
see AD 2-ESDF-4-4

15° 00'

15° 30'

16° 00'

**RONNEBY
RWY 19**

STANDARD ROUTES – INSTRUMENT

ARRIVAL (STAR)

REMARK

Descent to a minimum altitude for an arrival route must not be initiated until an air traffic control clearance to this altitude or an approach clearance has been received.

MADDE FOUR FOXTROT ARRIVAL (MADDE 4F)

At MADDE intercept KAL R-242. Proceed to LP QDM 195°. Turn left to intercept LOC DF, not below 2200 ft and proceed to LP.

TEMLI ONE FOXTROT ARRIVAL (TEMLI 1F)

At TEMLI intercept LP QDM 185°. Proceed to RON DME 16 and intercept LOC DF, not below 2200 ft and proceed to LP.

| | | |
|----------------|----------------------|-------------------------|
| MADDE = | 563505.4N 0155304.1E | KAL R-242 DME 14.6 |
| TEMLI = | 564041.5N 0152301.7E | KAL R-265, RON DME 29.8 |