

VISUAL APPROACH CHART - ICAO

1:250000



AD ELEV 191 FEET

ELEV and ALT in ft
HGT in ft above AD ELEV

TA 5000 AMSL

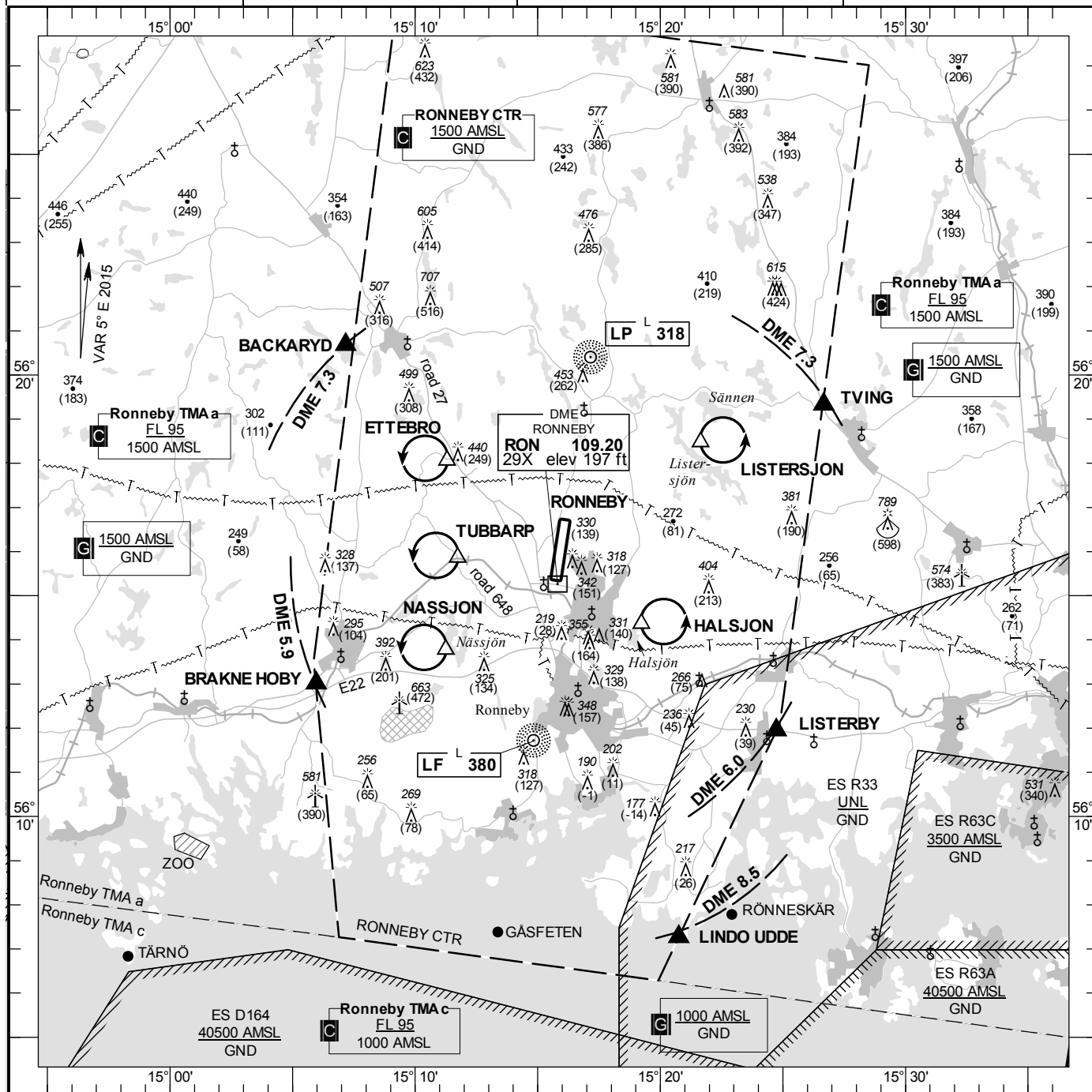
RONNEBY TOWER 119.200

RONNEBY GROUND 121.700

RONNEBY CONTROL 128.450

AD 2 ESDF 6-1

RONNEBY SWEDEN



Communication failure

- 1 SQUAWK 7600
- 2 Enter CTR via LISTERBY – Holding HALSJON or via BRAKNE HOBY – holding TUBBARP at or below 1000 ft AMSL to traffic circuit. Transmit blind your intentions.
- 3 Flash LDG-lights and watch TWR for optical signals.

RWY NR	THR ELEV	PAPI (MEHT)
01	181.3 ft	Left/3.25° (59 ft)
19	188.2 ft	Left/3.00° (71 ft)

Legend
See GEN 2.3

Remark/Warning
NIL

Entry / exit point

BACKARYD	562040N 0150710E
TVING	561919N 0152640E
LISTERBY	561156N 0152444E
LINDO UDDE	560715N 0152045E
BRAKNE HOBY	561300N 0150558E

Holding

- ETTEBRO:** Hold north of powerline, west of road 27, west of point 561803N 0151117E
- HALSJON:** Hold north of powerline and east of lake Halsjön, east of point 561421N 0151914E
- LISTERSJON:** Hold east of lake Listersjön and south of lake Sannen, east of point 561828N 0152139E
- NASSJON:** Hold west of lake Nässjön and north of road E22, west of point 561346N 0151114E
- TUBBARP:** Hold west of pylon at intersection of road 648 and railway, west of point 561551N 0151143E

LFV

CHANGE: THR ELEV 01, editorial

AIRAC AMDT 2/2014 **03 APR 2014**