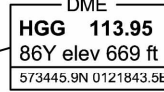
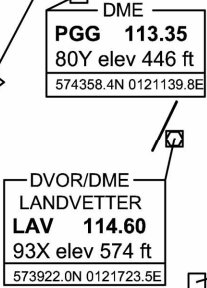
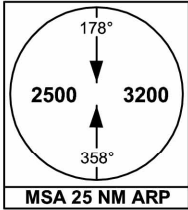


LEGEND  
See GEN 2.3

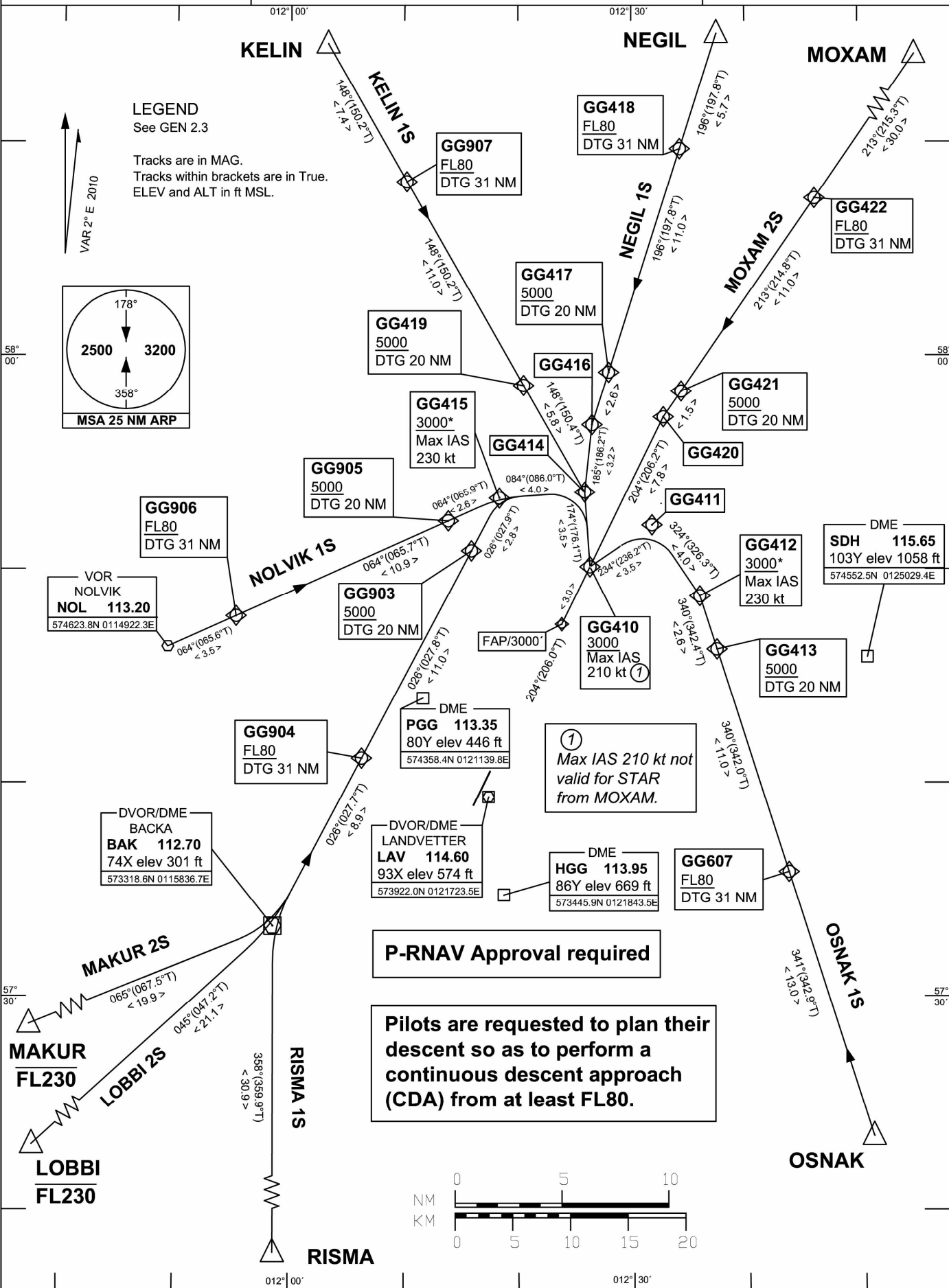
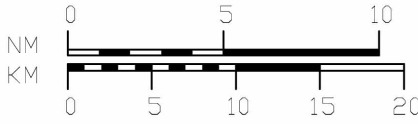
Tracks are in MAG.  
Tracks within brackets are in True.  
ELEV and ALT in ft MSL.

VAR 2° E 2010



P-RNAV Approval required

Pilots are requested to plan their descent so as to perform a continuous descent approach (CDA) from at least FL80.





**RNAV** (DME/DME or GNSS) **STAR****GÖTEBORG/Landvetter  
RWY 21****REMARK**

- Note 1: Following RNAV STARs are primarily used at night and during periods of low traffic density at ATC discretion.
- Note 2: P-RNAV Approval required.
- Note 3: Aircraft to GÖTEBORG/Landvetter shall not be operated at an airspeed of more than 250 kt IAS below FL100 unless otherwise instructed.
- Note 4: When established on ILS final approach track, maintain 160 kt IAS or more until passing OM, unless otherwise instructed. If unable, inform ATC immediately.
- Note 5: In case of radio communication failure, see AD 2.22 para 4.
- Note 6: Pilots are requested to plan their descent so as to perform a continuous descent approach (CDA) from at least FL80.

**Prescribed Coding of P-RNAV STARs for RWY 21 at GÖTEBORG/Landvetter (ESGG)**

RNAV STAR	Path term	To fix	WPT desc	Hdg/ Course MAG	Turn Dir	Rest Alts MSL	Speed Limits	Rec Nav
<b>KELIN 1S</b> (KELI1S)	IF	KELIN	E					
	TF	GG907	E			+FL80		
	TF	GG419	E			+5000		
	TF	GG414	E					
	TF	GG410	E			+3000	210	
	TF	FAP21 <sup>*)</sup>	EE			3000		

**STAR instruction:** KELIN – GG907 (FL80 or above) – GG419 (5000 ft or above) – GG414 – GG410 (max IAS 210 kt, 3000 ft or above) – FAP21<sup>\*)</sup>

<sup>\*)</sup> Unnamed WPT, due to different coding/naming conventions at navdatabase suppliers.

**Prescribed Coding of P-RNAV STARs for RWY 21 at GÖTEBORG/Landvetter (ESGG)**

RNAV STAR	Path term	To fix	WPT desc	Hdg/ Course MAG	Turn Dir	Rest Alts MSL	Speed Limits	Rec Nav
<b>LOBBI 2S</b> (LOBI2S)	IF	LOBBI	E			-FL230		
	TF	BAK	V					
	TF	GG904	E			+FL80		
	TF	GG903	E			+5000		
	TF	GG415	E			+3000	230	
	TF	GG414	E					
	TF	GG410	E			+3000	210	
	TF	FAP21 <sup>*)</sup>	EE			3000		

**STAR instruction:** LOBBI (FL230 or below) – BAK - GG904 (FL80 or above) – GG903 (5000 ft or above) – GG415 (max IAS 230 kt, 3000 ft or above) - GG414 – GG410 (max IAS 210 kt, 3000 ft or above) – FAP21<sup>\*)</sup>

<sup>\*)</sup> Unnamed WPT, due to different coding/naming conventions at navdatabase suppliers.

Prescribed Coding of P-RNAV STARs for RWY 21 at GÖTEBORG/Landvetter (ESGG)

RNAV STAR	Path term	To fix	WPT desc	Hdg/ Course MAG	Turn Dir	Rest Alts MSL	Speed Limits	Rec Nav
<b>MAKUR 2S</b> (MAKU2S)	IF	MAKUR	E			-FL230		
	TF	BAK	V					
	TF	GG904	E			+FL80		
	TF	GG903	E			+5000		
	TF	GG415	E			+3000	230	
	TF	GG414	E					
	TF	GG410	E			+3000	210	
	TF	FAP21 <sup>*)</sup>	EE			3000		

**STAR instruction:** MAKUR (FL230 or below) – BAK - GG904 (FL80 or above) – GG903 (5000 ft or above) – GG415 (max IAS 230 kt, 3000 ft or above) - GG414 – GG410 (max IAS 210 kt, 3000 ft or above) – FAP21<sup>\*)</sup>

<sup>\*)</sup> Unnamed WPT, due to different coding/naming conventions at navdatabase suppliers.

Prescribed Coding of P-RNAV STARs for RWY 21 at GÖTEBORG/Landvetter (ESGG)

RNAV STAR	Path term	To fix	WPT desc	Hdg/ Course MAG	Turn Dir	Rest Alts MSL	Speed Limits	Rec Nav
<b>MOXAM 2S</b> (MOXA2S)	IF	MOXAM	E					
	TF	GG422	E			+FL80		
	TF	GG421	E			+5000		
	TF	GG420	E					
	TF	GG410	E			+3000		
	TF	FAP21 <sup>*)</sup>	EE			3000		

**STAR instruction:** MOXAM – GG422 (FL80 or above) – GG421 (5000 ft or above) – GG420 – GG410 (3000 ft or above) – FAP21<sup>\*)</sup>

<sup>\*)</sup> Unnamed WPT, due to different coding/naming conventions at navdatabase suppliers.

**P-RNAV STAR****GÖTEBORG/Landvetter  
RWY 21****Prescribed Coding of P-RNAV STARs for RWY 21 at GÖTEBORG/Landvetter (ESGG)**

RNAV STAR	Path term	To fix	WPT desc	Hdg/ Course MAG	Turn Dir	Rest Alts MSL	Speed Limits	Rec Nav
<b>NEGIL 1S</b> (NEG1S)	IF	NEGIL	E					
	TF	GG418	E			+FL80		
	TF	GG417	E			+5000		
	TF	GG416	E					
	TF	GG414	E					
	TF	GG410	E			+3000	210	
	TF	FAP21 <sup>*)</sup>	EE			3000		

**STAR instruction:** NEGIL – GG418 (FL80 or above) – GG417 (5000 ft or above) – GG416 – GG414 – GG410 (max IAS 210 kt, 3000 ft or above) – FAP21<sup>\*)</sup>

<sup>\*)</sup> Unnamed WPT, due to different coding/naming conventions at navdatabase suppliers.

**Prescribed Coding of P-RNAV STARs for RWY 21 at GÖTEBORG/Landvetter (ESGG)**

RNAV STAR	Path term	To fix	WPT desc	Hdg/ Course MAG	Turn Dir	Rest Alts MSL	Speed Limits	Rec Nav
<b>NOLVIK 1S</b> (NOL1S)	IF	NOL	V					
	TF	GG906	E			+FL80		
	TF	GG905	E			+5000		
	TF	GG415	E			+3000	230	
	TF	GG414	E					
	TF	GG410	E			+3000	210	
	TF	FAP21 <sup>*)</sup>	EE			3000		

**STAR instruction:** NOL – GG906 (FL80 or above) – GG905 (5000 ft or above) – GG415 (max IAS 230 kt, 3000 ft or above) - GG414 – GG410 (max IAS 210 kt, 3000 ft or above) – FAP21<sup>\*)</sup>

<sup>\*)</sup> Unnamed WPT, due to different coding/naming conventions at navdatabase suppliers.

Prescribed Coding of P-RNAV STARs for RWY 21 at GÖTEBORG/Landvetter (ESGG)

RNAV STAR	Path term	To fix	WPT desc	Hdg/ Course MAG	Turn Dir	Rest Alts MSL	Speed Limits	Rec Nav
OSNAK 1S (OSNA1S)	IF	OSNAK	E					
	TF	GG607	E			+FL80		
	TF	GG413	E			+5000		
	TF	GG412	E			+3000	230	
	TF	GG411	E					
	TF	GG410	E			+3000	210	
	TF	FAP21 <sup>*)</sup>	EE			3000		

**STAR instruction:** OSNAK – GG607 (FL80 or above) – GG413 (5000 ft or above) – GG412 (max IAS 230 kt, 3000 ft or above) - GG411 – GG410 (max IAS 210 kt, 3000 ft or above) – FAP21<sup>\*)</sup>

<sup>\*)</sup> Unnamed WPT, due to different coding/naming conventions at navdatabase suppliers.

Prescribed Coding of P-RNAV STARs for RWY 21 at GÖTEBORG/Landvetter (ESGG)

RNAV STAR	Path term	To fix	WPT desc	Hdg/ Course MAG	Turn Dir	Rest Alts MSL	Speed Limits	Rec Nav
RISMA 1S (RISM1S)	IF	RISMA	E					
	TF	BAK	V					
	TF	GG904	E			+FL80		
	TF	GG903	E			+5000		
	TF	GG415	E			+3000	230	
	TF	GG414	E					
	TF	GG410	E			+3000	210	
	TF	FAP21 <sup>*)</sup>	EE			3000		

**STAR instruction:** RISMA – BAK - GG904 (FL80 or above) – GG903 (5000 ft or above) – GG415 (max IAS 230 kt, 3000 ft or above) - GG414 – GG410 (max IAS 210 kt, 3000 ft or above) – FAP21<sup>\*)</sup>

<sup>\*)</sup> Unnamed WPT, due to different coding/naming conventions at navdatabase suppliers.