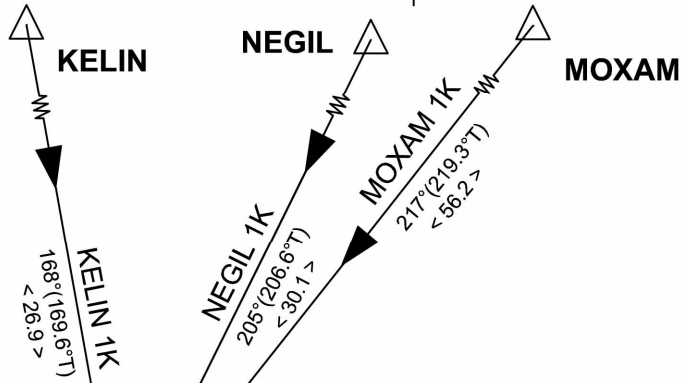


58° 00'

58° 00'

012° 00'

012° 30'



VEMAS

DME
SDH 115.65
103Y elev 1058 ft
574552.5N 0125029.4E

DME
PGG 113.35
80Y elev 446 ft
574358.4N 0121139.8E

DVOR/DME
LANDVETTER
LAV 114.60
93X elev 574 ft
573922.0N 0121723.5E

DVOR/DME
BACKA
BAK 112.70
74X elev 301 ft
573318.6N 0115836.7E

DME
HGG 113.95
86Y elev 669 ft
573445.9N 0121843.5E

TOMVI IAF

092°/BAK R-272

272°

MAKUR 2K
57° 30' 059° (061.1°T)
< 16.2 >

MAKUR
FL170

LOBBI 2K
036° (037.8°T)
< 18.4 >

LOBBI
FL170

BAK R-272 /DME 4.2

MAX IAS 230 kt
1 min
MNM 4000 ft

RISMA 1K
350° (352.2°T)
< 31.4 >

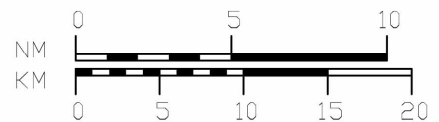
RISMA

P-RNAV Approval required

Holding TOMVI is designed both for RNAV and conventional based on VOR/DME BAK.

LEGEND
See GEN 2.3

Tracks are in MAG.
Tracks within brackets are in True.
ELEV and ALT in ft MSL.



012° 00'

012° 30'

RNAV_(DME/DME or GNSS) **STAR**
RWY 03

GÖTEBORG/Landvetter

REMARK

- Note 1: Following RNAV STARs are primarily used during periods of high to medium traffic density. Aircraft will be radar vectored to final.
- Note 2: P-RNAV Approval required.
- Note 3: Operators unable flying P-RNAV shall inform ATC by using phraseology "UNABLE RNAV STAR". Radar vectors will then be provided.
- Note 4: Aircraft to GÖTEBORG/Landvetter shall not be operated at an airspeed of more than 250 kt IAS below FL100 unless otherwise instructed.
- Note 5: When established on ILS final approach track, maintain 160 kt IAS or more until passing OM, unless otherwise instructed. If unable, inform ATC immediately.
- Note 6: In case of radio communication failure, see AD 2.22 para 4.

Prescribed Coding of P-RNAV STARs for RWY 03 GÖTEBORG/Landvetter (ESGG)

RNAV STAR	Path term	To fix	WPT desc	Hdg/ Course MAG	Turn Dir	Rest Alts MSL	Speed Limits	Rec Nav
KELIN 1K (KELI1K)	IF	KELIN	E					
	TF	VEMAS	E					
	TF	TOMVI	EE					

STAR instruction: KELIN – VEMAS – TOMVI - radar vectors

RNAV STAR	Path term	To fix	WPT desc	Hdg/ Course MAG	Turn Dir	Rest Alts MSL	Speed Limits	Rec Nav
LOBBI 2K (LOBI2K)	IF	LOBBI	E			-FL170		
	TF	TOMVI	EE					

STAR instruction: LOBBI (FL170 or below) – TOMVI - radar vectors

RNAV STAR	Path term	To fix	WPT desc	Hdg/ Course MAG	Turn Dir	Rest Alts MSL	Speed Limits	Rec Nav
MAKUR 2K (MAKU2K)	IF	MAKUR	E			-FL170		
	TF	TOMVI	EE					

STAR instruction: MAKUR (FL170 or below) – TOMVI - radar vectors

Prescribed Coding of P-RNAV STARs for RWY 03 at GÖTEBORG/Landvetter (ESGG)

RNAV STAR	Path term	To fix	WPT desc	Hdg/ Course MAG	Turn Dir	Rest Alts MSL	Speed Limits	Rec Nav
MOXAM 1K (MOXA1K)	IF	MOXAM	E					
	TF	VEMAS	E					
	TF	TOMVI	EE					

STAR instruction: MOXAM – VEMAS – TOMVI - radar vectors

RNAV STAR	Path term	To fix	WPT desc	Hdg/ Course MAG	Turn Dir	Rest Alts MSL	Speed Limits	Rec Nav
NEGIL 1K (NEGI1K)	IF	NEGIL	E					
	TF	VEMAS	E					
	TF	TOMVI	EE					

STAR instruction: NEGIL – VEMAS – TOMVI - radar vectors

RNAV STAR	Path term	To fix	WPT desc	Hdg/ Course MAG	Turn Dir	Rest Alts MSL	Speed Limits	Rec Nav
RISMA 1K (RISM1K)	IF	RISMA	E					
	TF	TOMVI	EE					

STAR instruction: RISMA – TOMVI - radar vectors