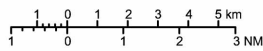


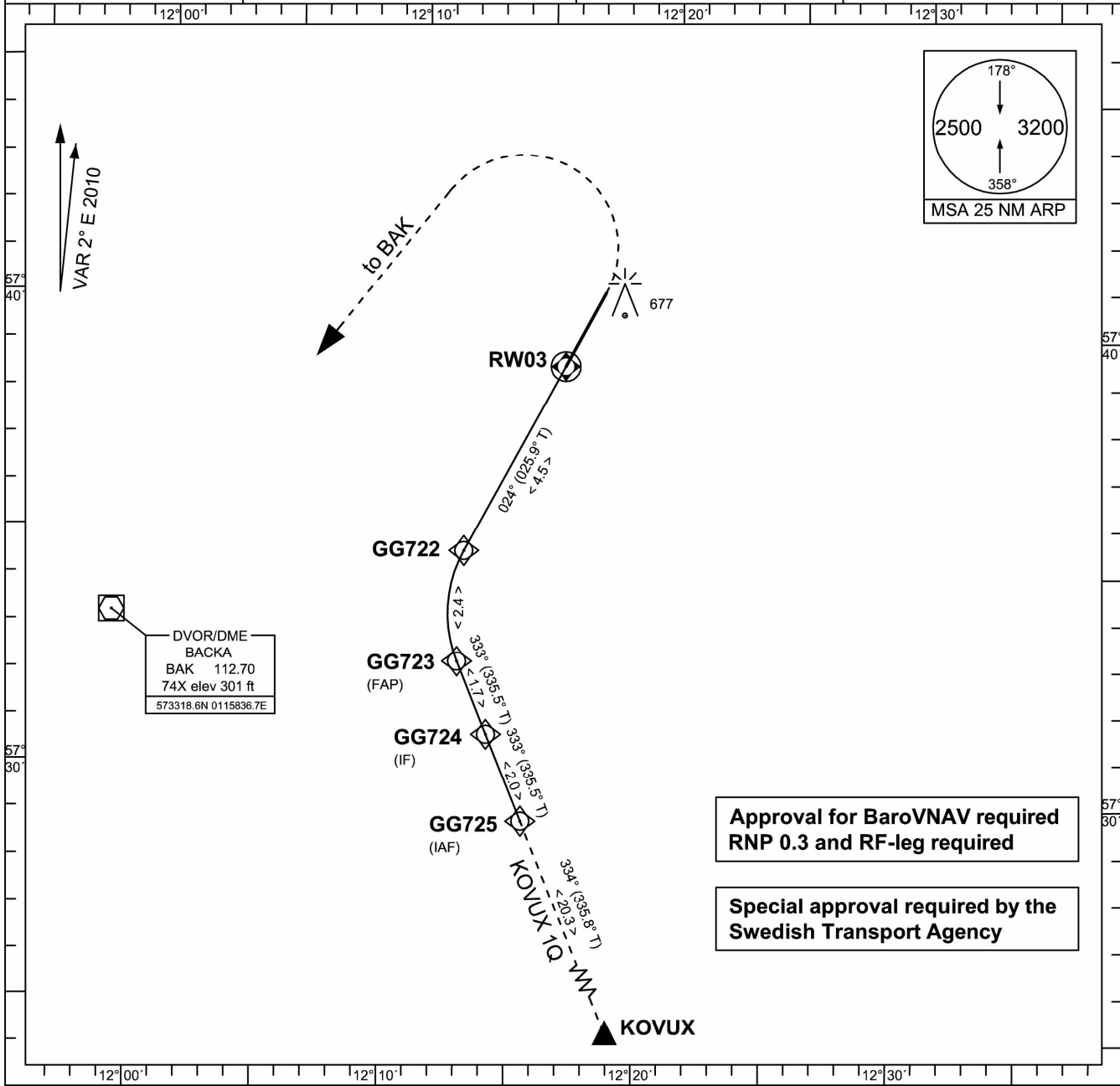
INSTRUMENT APPROACH CHART-ICAO  
1:250 000



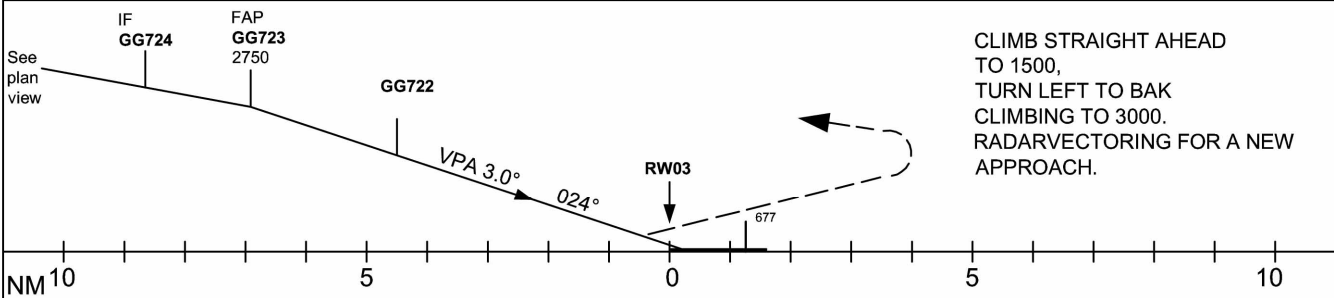
THR ELEV 478 ft, AD ELEV 506 ft  
HGT are related to THR.  
BRG are MAG.  
ALT, HGT and ELEV in ft.

LANDVETTER  
TOWER 118.600  
ATIS 118.375  
GÖTEBORG  
CONTROL 124.675

AD 2-ESGG-5-11  
RNAV(RNP) RWY 03  
GÖTEBORG/LANDVETTER  
SWEDEN



TRANSITION ALTITUDE 5000 MSL | PAPI GP 3.0° | RDH 54 FT



OCA(H)	CAT C	CAT D
RNP(0.3) LNAV/VNAV	840 (360)	840 (360)
NA BELOW -25° C		

LFV CHANGE: ALT info at GG722 in vertical cut delete. Missed APCH, MSA. Editorial. AIRAC AMDT 5/2013 22 AUG 2013

RNP STAR KOVUX 1Q  
RNAV(RNP) RWY 03

GÖTEBORG/LANDVETTER  
RWY 03

Prescribed Coding RNP STAR KOVUX 1Q And RNAV(RNP) for RWY 03 at  
GÖTEBORG/LANDVETTER

RNP STAR	Path term	To fix	WPT desc	Hdg/ Course MAG	Turn Dir	Rest Alts MSL	Speed Limits	Rec Nav	Vert Angle	Nav Perf.
KOVUX 1Q (KOVU1Q)	IF	KOVUX	E							RNP 1.0
	TF	GG725	EE							RNP 1.0

WPT sequence: KOVUX – GG725

Approach RNP AR	Path term	To fix	WPT desc	Hdg/ Course MAG	Turn Dir	Rest Alts MSL	Speed Limits	ARC Radius	Vert Angle	Arc center	Nav Perf.
	IF	GG725	E								RNP0.3
	TF	GG724	E								RNP0.3
	TF	GG723	E F			2750					RNP0.3
	RF	GG722	E		R			2.769 NM	-3.00	ARC27	RNP0.3
	TF	RW03	GY			532			-3.00		RNP0.3

WPT sequence: GG725 – GG724 – GG723 (A2750) – GG722 – RW03