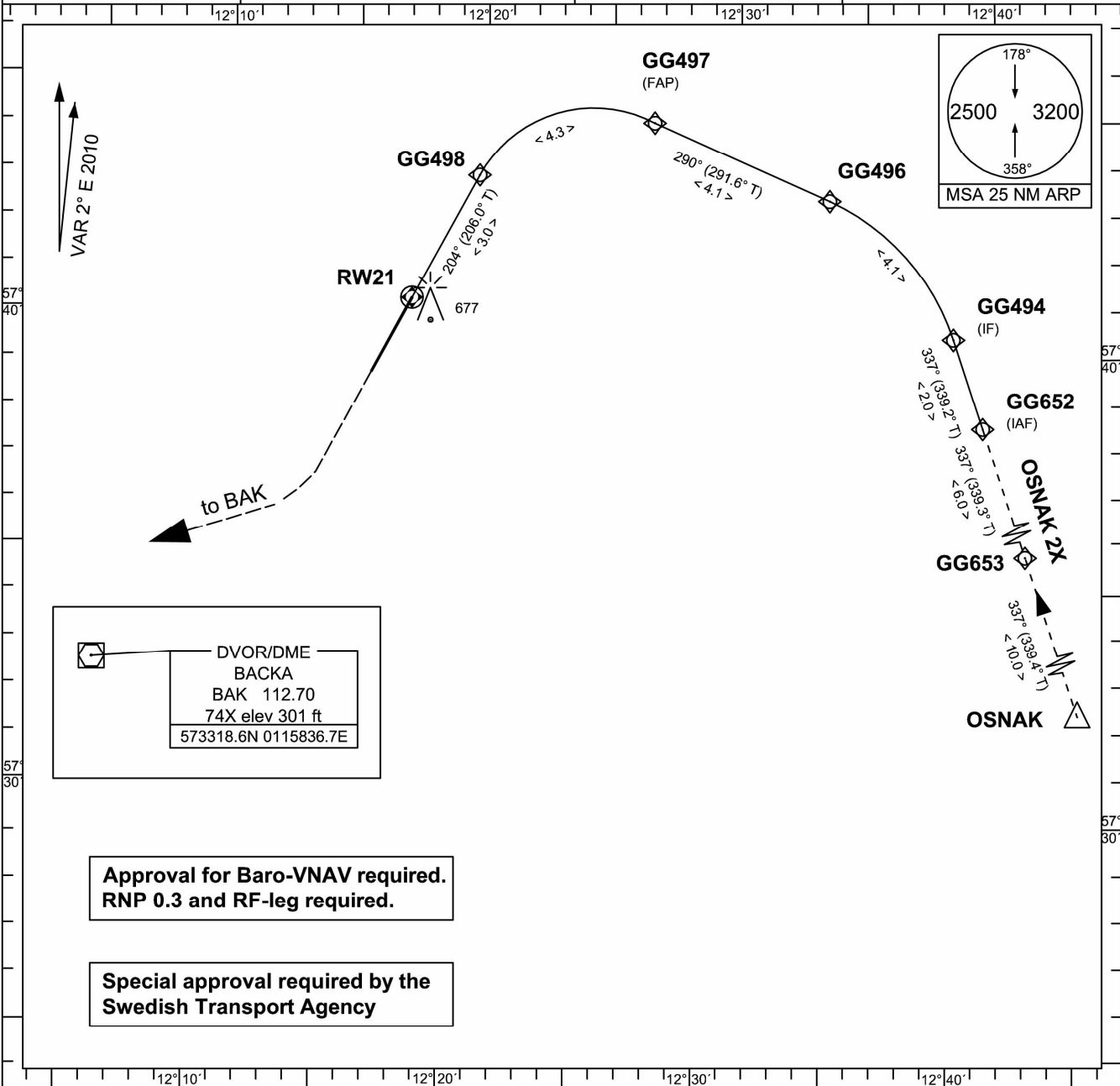


INSTRUMENT
APPROACH CHART-ICAO
1:250 000

THR ELEV 506 ft, AD ELEV 506 ft
HGT are related to THR.
BRG are MAG.
ALT, HGT and ELEV in ft.

LANDVETTER
TOWER 118.600
ATIS 118.375
GÖTEBORG
CONTROL 124.675

AD 2-ESGG-5-13
RNAV(RNP) RWY 21
GÖTEBORG/LANDVETTER
SWEDEN

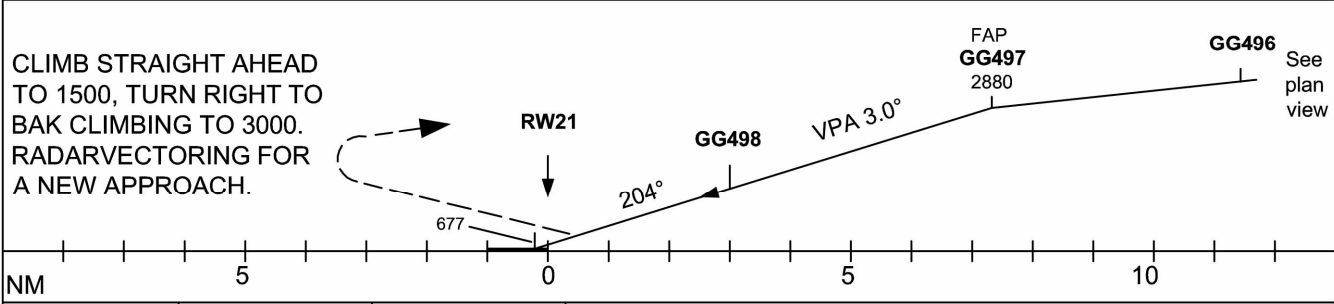


DVOR/DME
BACKA
BAK 112.70
74X elev 301 ft
573318.6N 0115836.7E

**Approval for Baro-VNAV required.
RNP 0.3 and RF-leg required.**

**Special approval required by the
Swedish Transport Agency**

TRANSITION ALTITUDE 5000 MSL | PAPI GP 3.0° | RDH 50 FT



OCA(H)	Cat C	Cat D
RNP(0.3) LNAV/VNAV	840(340)	840(340)
	NA BELOW -25°C	

LFV CHANGE: Wpt GG495 replaced by GG494 and GG650 replaced by GG652. STAR OSNAK2X. ALT info at GG498 in vertical cut deleted. Missed APCH. MSA. Editorial. AIRAC AMDT 5/2013 22 AUG 2013

RNP STAR OSNAK 2X

GÖTEBORG/LANDVETTER

RNAV(RNP) RWY 21

RWY 21

Prescribed Coding RNP STAR OSNAK 2X and RNAV(RNP) for RWY 21 at GÖTEBORG/LANDVETTER

RNP STAR	Path term	To fix	WPT desc	Hdg/ Course MAG	Turn Dir	Rest Alts MSL	Speed Limits	Rec Nav	Vert Angle	Nav Perf.
OSNAK 2X (OSNA2X)	IF	OSNAK	E							RNP 1.0
	TF	GG653	E							RNP 1.0
	TF	GG652	EE							RNP 1.0

WPT sequence: OSNAK – GG653 – GG652

Approach RNP AR	Path term	To fix	WPT desc	Hdg/ Course MAG	Turn Dir	Rest Alts MSL	Speed Limits	ARC Radius	Vert Angle	Arc center	Nav Perf.
	IF	GG652	E								RNP0.3
	TF	GG494	E								RNP0.3
	RF	GG496	E		L			4.951 NM		ARC50	RNP0.3
	TF	GG497	E F			2880					RNP0.3
	RF	GG498	E		L			2.769 NM	-3.00	ARC28	RNP0.3
	TF	RW21	GY			556			-3.00		RNP0.3

WPT sequence: GG652 – GG494 – GG496 – GG497 (A2880) – GG498 – RW21