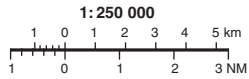


INSTRUMENT APPROACH CHART-ICAO



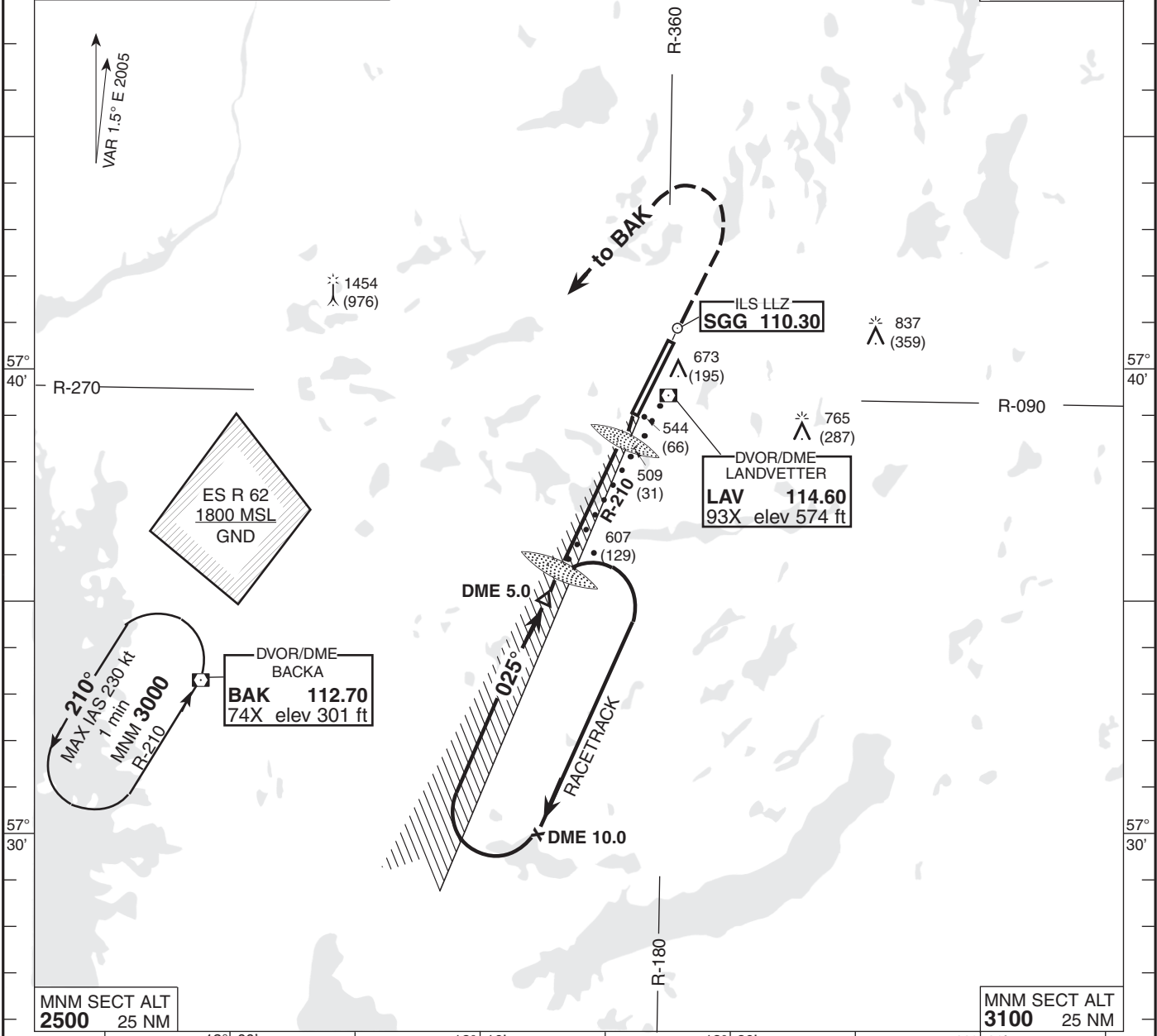
THR ELEV 478 ft, AD ELEV 506 ft
 HGT are related to THR.
 Circling HGT are related to AD ELEV.
 BRG are MAG.
 ALT, HGT and ELEV in ft.

LANDVETTER TOWER 118.600
ATIS 118.375
GÖTEBORG CONTROL 124.675

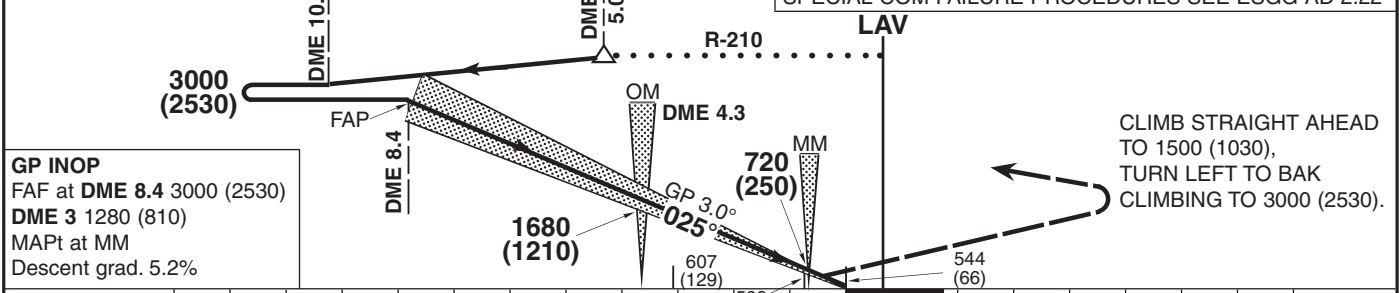
AD 2-ESGG-5-1
VOR/DME+ILS 03
GÖTEBORG/LANDVETTER
SWEDEN

MNM SECT ALT **2500** 25 NM
 PANS-OPS
 FOURTH EDITION 1993

MNM SECT ALT **3100** 25 NM



TRANSITION ALTITUDE 5000 MSL | ILS RDH (54) | PAPI GP 3.0° (5.2%) | *TIMING NOT AUTHORIZED FOR DEFINING THE MAPt
 SPECIAL COM FAILURE PROCEDURES SEE ESGG AD 2.22



Cat of ACFT	OCA (H)				Final approach Distance	GP INOP Distance FAF-MAPt 7.13 NM*						
	A	B	C	D		DME 8	DME 7	DME 6	DME 5	DME 4	DME 3	DME 2
Straight-in	Cat I	625 (147)	635 (157)	647 (169)	661 (183)	2870 (2400)	2550 (2080)	2230 (1760)	1910 (1440)	1590 (1120)	1280 (810)	960 (490)
	Cat II	533 (55)	542 (64)	556 (78)	570 (92)							
GP INOP	760 (280)				Speed	kt	80	100	120	140	160	180
Circling	970 (470)	1010 (500)	1160 (660)	1240 (740)	Rate of descent	ft/min	425	530	635	745	850	955