

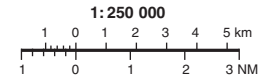
AD 2-ESGG-5-2

LANDVETTER TOWER 118.600
 ATIS 118.375
 GÖTEBORG CONTROL 124.675

THR ELEV 478 ft, AD ELEV 506 ft
 HGT are related to THR.
 Circling HGT are related to AD ELEV.
 BRG are MAG.
 ALT, HGT and ELEV in ft.

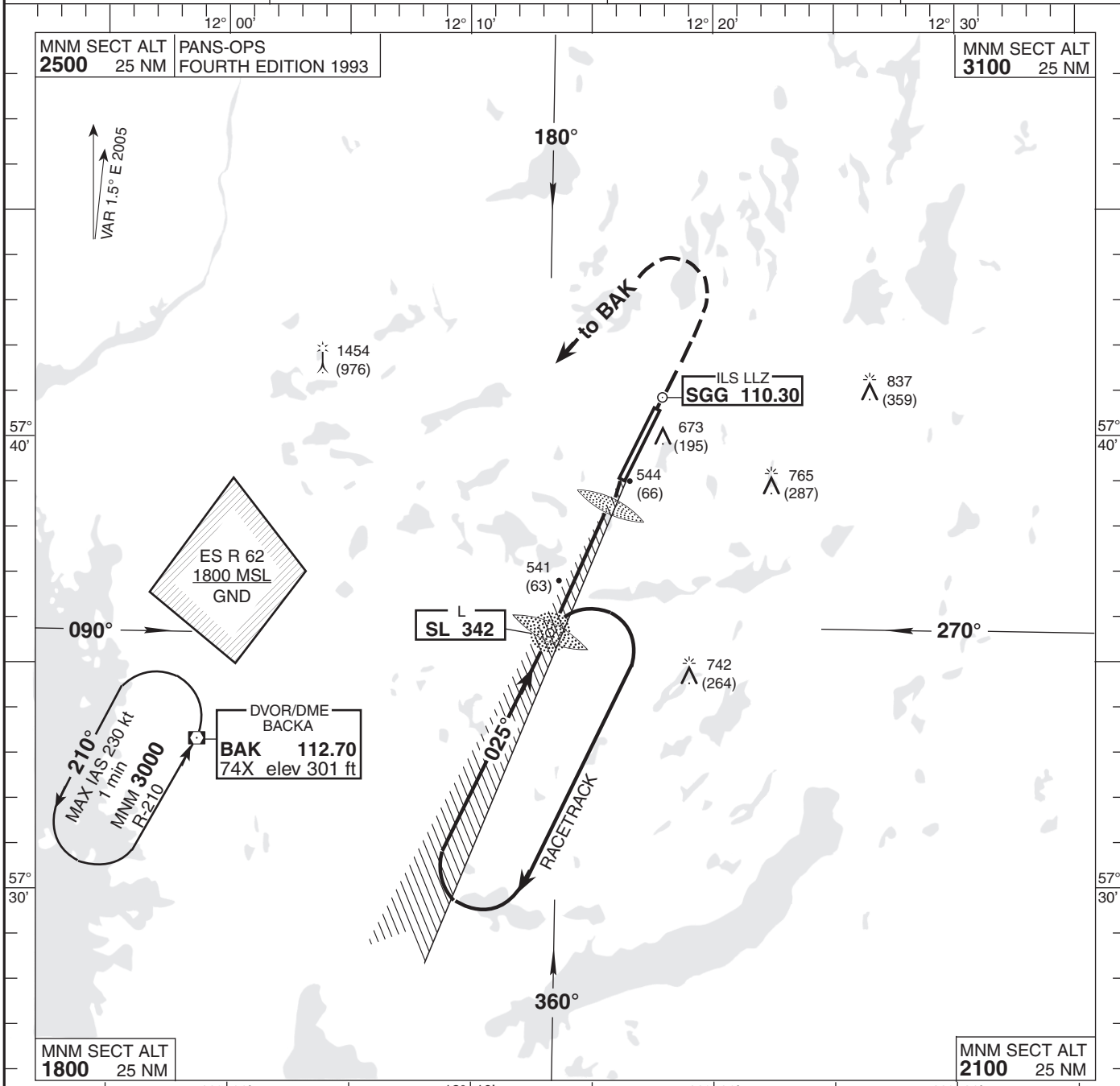
INSTRUMENT
 APPROACH CHART-ICAO

NDB+ILS 03
 GÖTEBORG/LANDVETTER
 SWEDEN

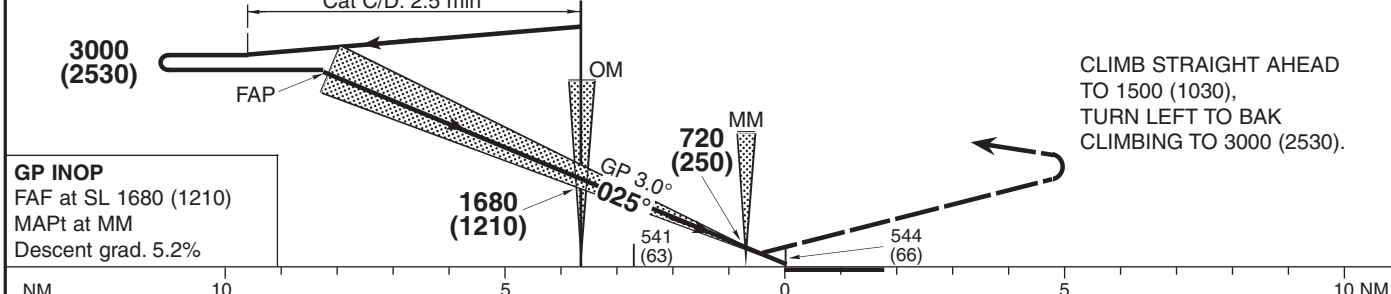


MNM SECT ALT 2500 25 NM
 PANS-OPS FOURTH EDITION 1993

MNM SECT ALT 3100 25 NM



TRANSITION ALTITUDE 5000 MSL ILS RDH (54) PAPI GP 3.0° (5.2%)
 MNM speed 110 kt IAS Cat A/B: 3.0 min Cat C/D: 2.5 min
 **TIMING NOT AUTHORIZED FOR DEFINING THE MAPt
 SPECIAL COM FAILURE PROCEDURES SEE ESGG AD 2.22



		OCA (H)				Final approach							
Cat of ACFT		A	B	C	D	GP INOP Distance FAF-MAPt 3.02 NM *							
Straight-in	Cat I	625 (147)	635 (157)	647 (169)	661 (183)	Speed	kt	80	100	120	140	160	180
	Cat II	533 (55)	543 (65)	556 (78)	570 (92)	Time	min:s	2:16	1:49	1:30	1:18	1:08	1:00
	GP INOP	790 (310)				Rate of descent	ft/min	425	530	635	745	850	955
Circling		970 (470)	1010 (500)	1160 (660)	1240 (740)								

ESGG-NDB+ILS 03
 21 DEC 2006

AMDT 94

CHANGE: COM FAILURE

Swedish Civil Aviation Authority