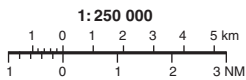


INSTRUMENT APPROACH CHART-ICAO



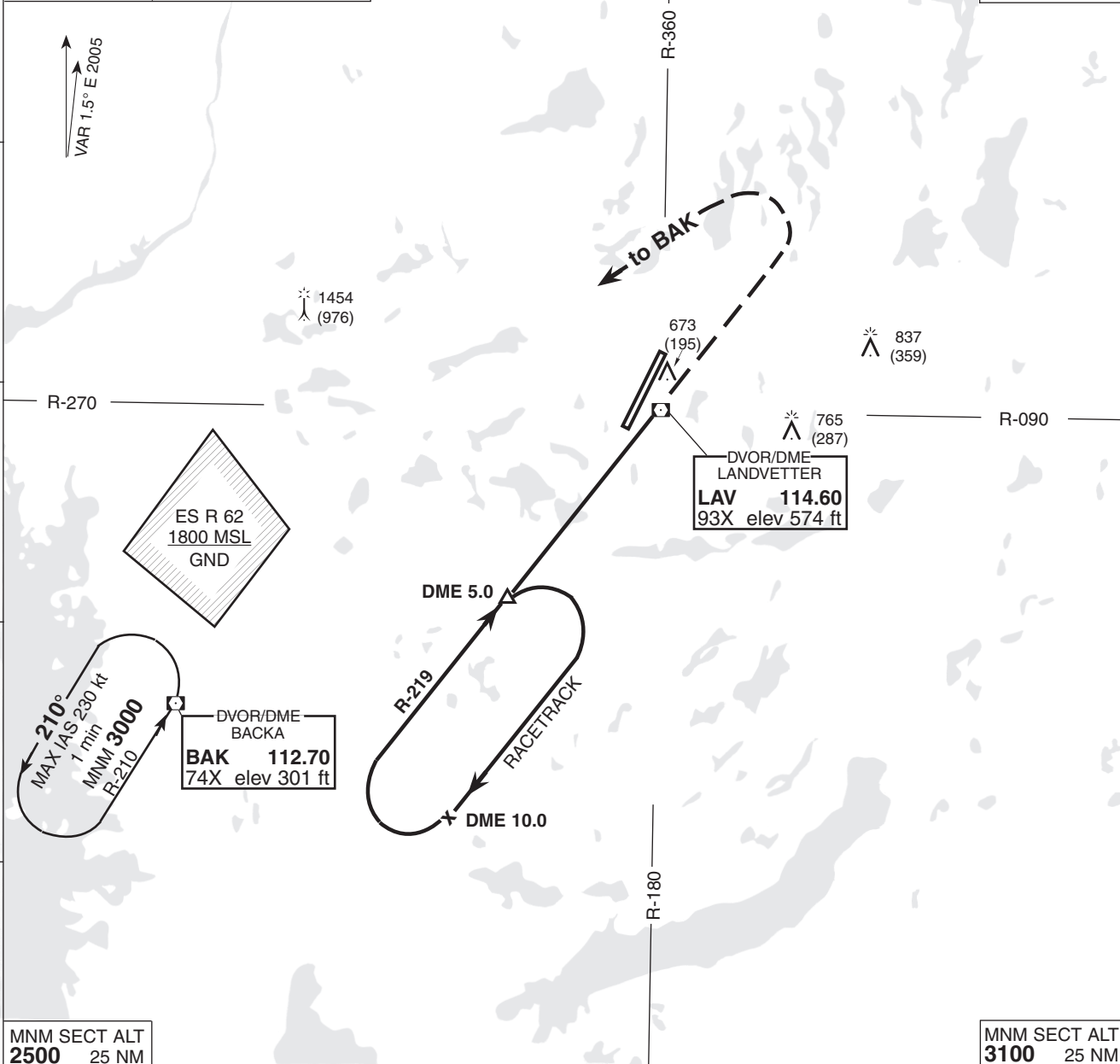
THR ELEV 478 ft, AD ELEV 506 ft  
 HGT are related to THR.  
 Circling HGT are related to AD ELEV.  
 BRG are MAG.  
 ALT, HGT and ELEV in ft.

LANDVETTER TOWER 118.600  
 ATIS 118.375  
 GÖTEBORG CONTROL 124.675

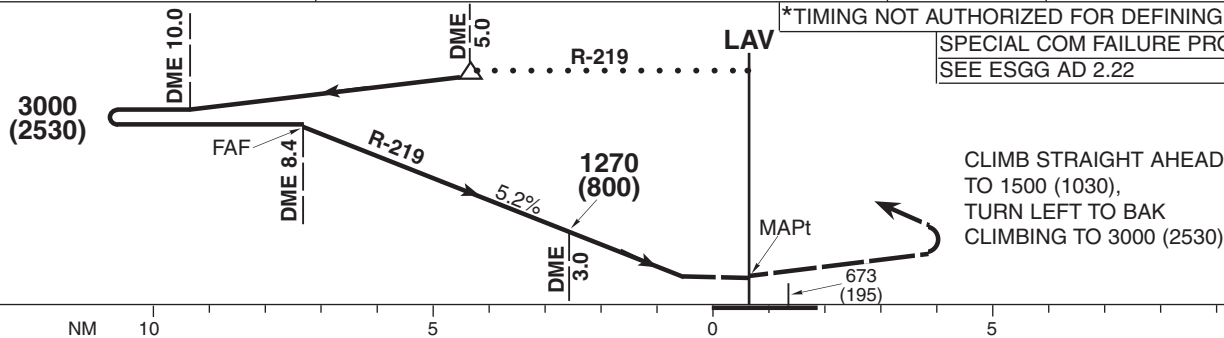
AD 2-ESGG-5-3  
 VOR/DME 03  
 GÖTEBORG/LANDVETTER  
 SWEDEN

MNM SECT ALT 2500 25 NM  
 PANS-OPS FOURTH EDITION 1993

MNM SECT ALT 3100 25 NM



TRANSITION ALTITUDE 5000 MSL    REMARK: FINAL APCH LINE OFFSET 15° FM QFU 025°    PAPI GP 5.2%  
 \*TIMING NOT AUTHORIZED FOR DEFINING THE MAPt  
 SPECIAL COM FAILURE PROCEDURES SEE ESGG AD 2.22



	OCA (H)				Final approach Distance FAF-MAPt 8.4 NM *							
	A	B	C	D	Distance	DME 7	DME 6	DME 5	DME 4	DME 3	DME 2	
Cat of ACFT	A	B	C	D	ALT (HGT)	2530 (2060)	2220 (1750)	1900 (1430)	1580 (1110)	1270 (800)	950 (480)	
Straight-in	900 (430)				Speed	kt	80	100	120	140	160	180
Circling	970 (470)	1010 (500)	1160 (660)	1240 (740)	Rate of descent	ft/min	425	530	635	740	845	950