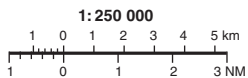


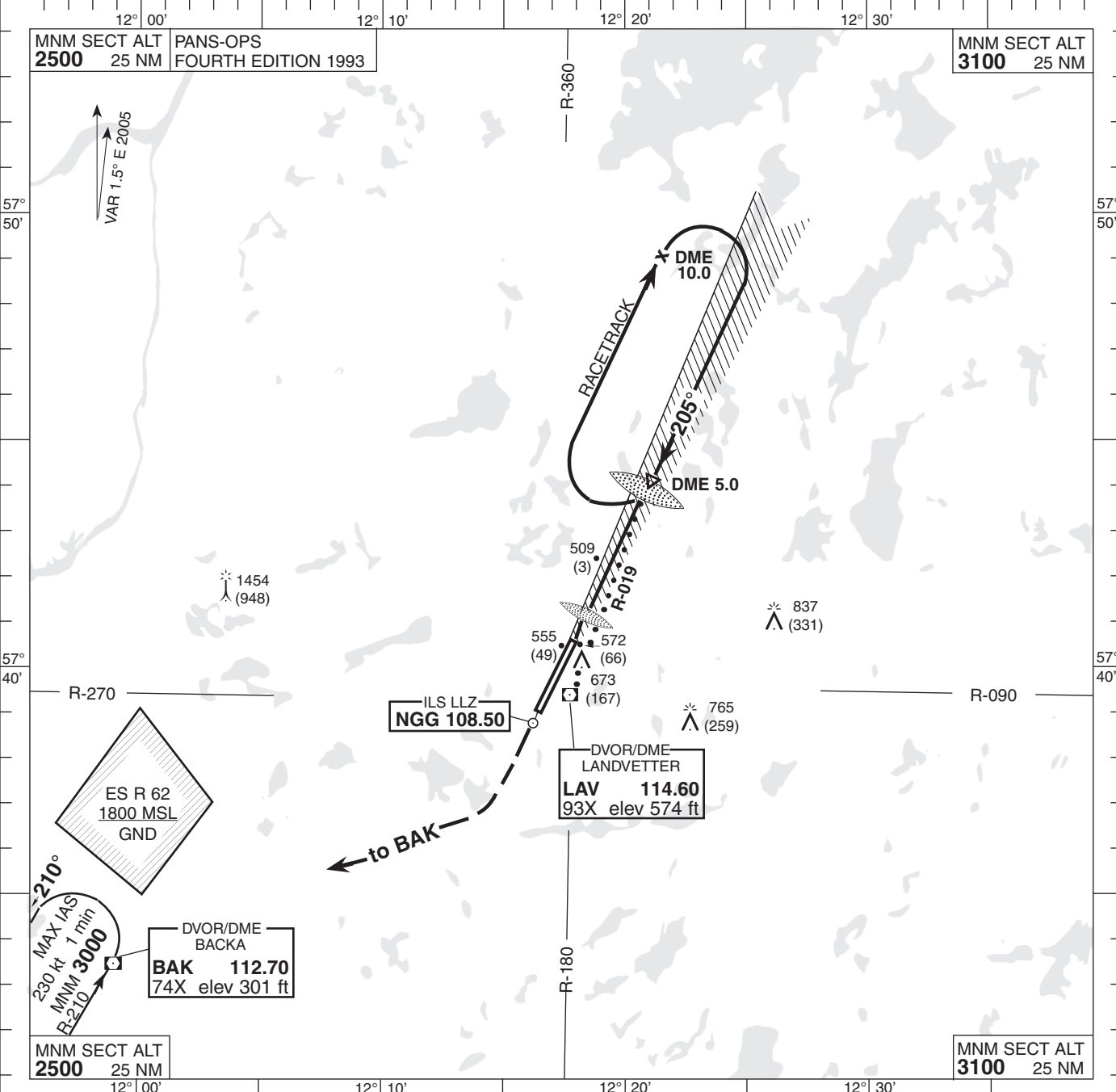
INSTRUMENT
APPROACH CHART-ICAO



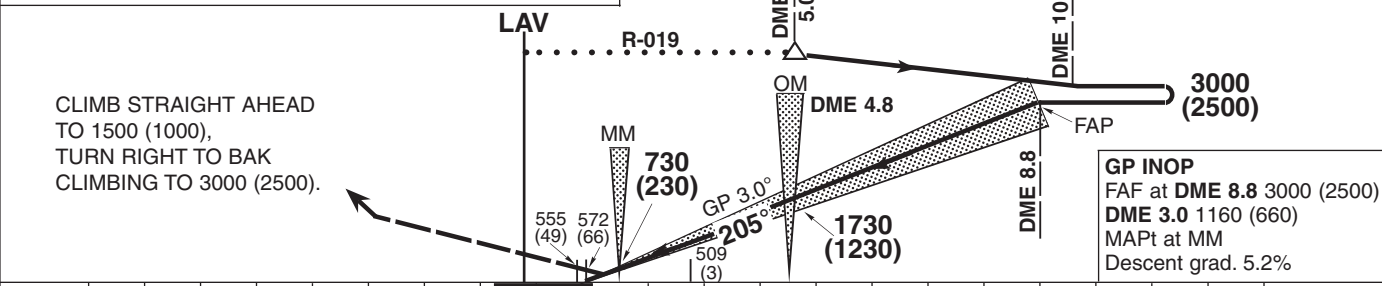
THR ELEV 506 ft, AD ELEV 506 ft
HGT are related to THR.
Circling HGT are related to AD ELEV.
BRG are MAG.
ALT, HGT and ELEV in ft.

LANDVETTER TOWER 118.600
ATIS 118.375
GÖTEBORG CONTROL 124.675

AD 2-ESGG-5-5
VOR/DME+ILS 21
GÖTEBORG/LANDVETTER
SWEDEN



TRANSITION ALTITUDE 5000 MSL ILS RDH (50) PAPI GP 3.0° (5.2%) * TIMING NOT AUTHORIZED FOR DEFINING THE MAPt
SPECIAL COM FAILURE PROCEDURES SEE ESGG AD 2.22



Cat of ACFT	OCA (H)				Final approach Distance	GP INOP Distance FAF-MAPt 7.16 NM*						
	A	B	C	D		DME 8	DME 7	DME 6	DME 5	DME 4	DME 3	DME 2
Straight-in	Cat I	655 (149)	664 (158)	674 (168)	686 (180)	2760 (2260)	2440 (1940)	2120 (1620)	1800 (1300)	1480 (980)	1160 (660)	840 (340)
	Cat II	565 (59)	573 (67)	585 (79)	600 (94)							
GP INOP	760 (260)				Speed	kt	80	100	120	140	160	180
Circling	970 (470)	1010 (500)	1160 (660)	1240 (740)	Rate of descent	ft/min	425	530	635	745	850	955