

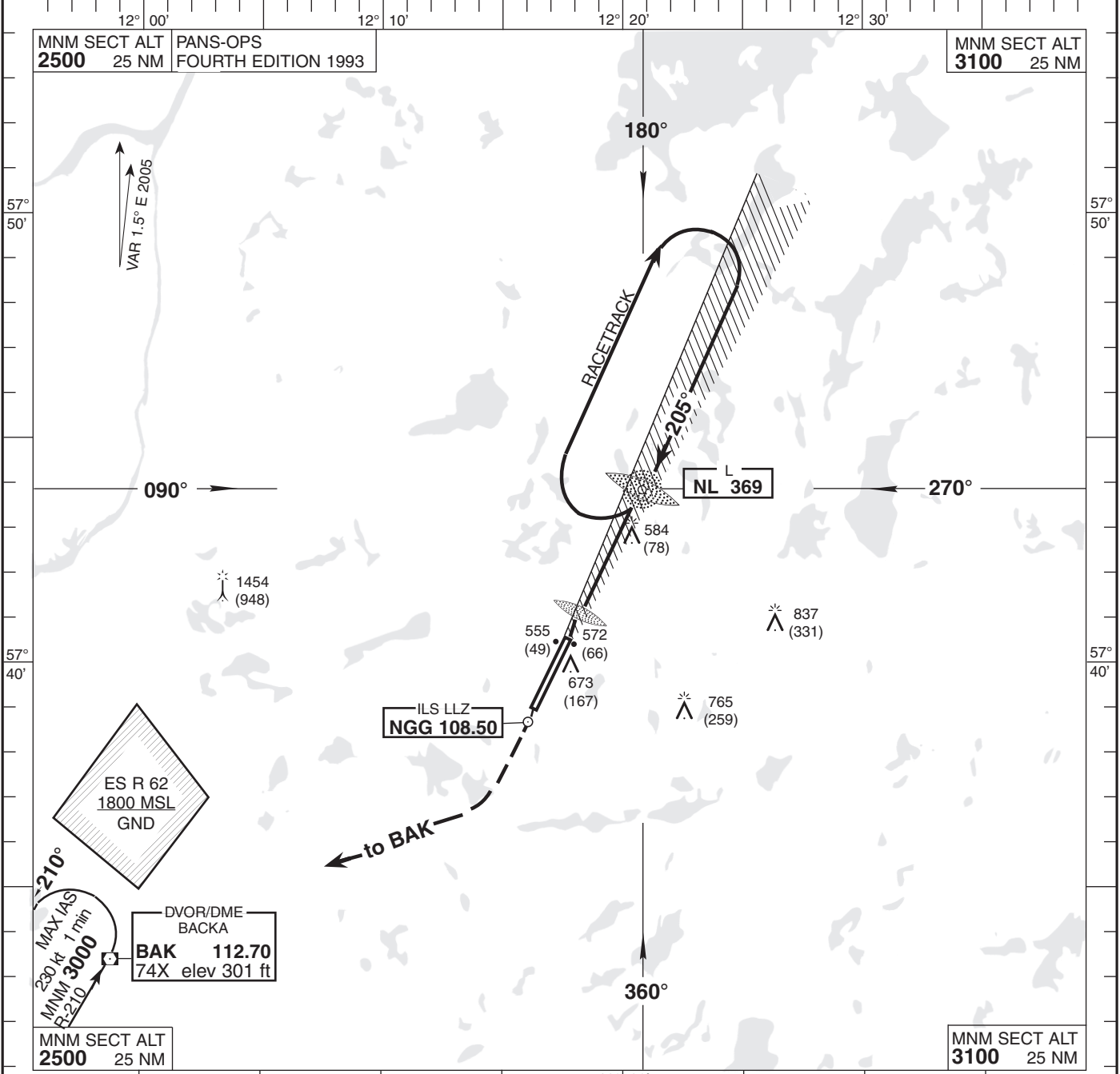
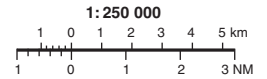
AD 2-ESGG-5-6

LANDVETTER TOWER 118.600
 ATIS 118.375
 GÖTEBORG CONTROL 124.675

THR ELEV 506 ft, AD ELEV 506 ft
 HGT are related to THR.
 Circling HGT are related to AD ELEV.
 BRG are MAG.
 ALT, HGT and ELEV in ft.

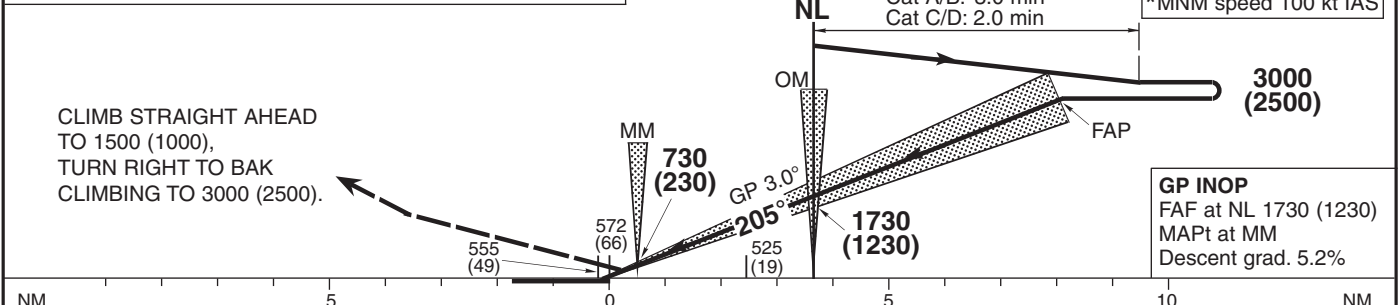
INSTRUMENT
 APPROACH CHART-ICAO

NDB+ILS 21
 GÖTEBORG/LANDVETTER
 SWEDEN



TRANSITION ALTITUDE 5000 MSL ILS RDH (50) PAPI GP 3.0° (5.2%) **TIMING NOT AUTHORIZED FOR DEFINING THE MAP

SPECIAL COM FAILURE PROCEDURES SEE ESGG AD 2.22



		OCA (H)				Final approach							
Cat of ACFT		A	B	C	D	GP INOP Distance FAF-MAPt 3.14 NM**							
Straight-in	Cat I	655 (149)	664 (158)	674 (168)	686 (180)	Speed	kt	80	100	120	140	160	180
	Cat II	565 (59)	573 (67)	585 (79)	600 (94)	Time	min:s	2:21	1:53	1:34	1:21	1:11	1:03
GP INOP		830 (330)				Rate of descent	ft/min	425	530	635	745	850	955
Circling		970 (470)	1010 (500)	1160 (660)	1240 (740)								