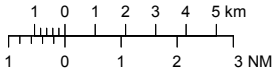


VISUAL APPROACH CHART - ICAO

1:250000



AD ELEV 507 FEET

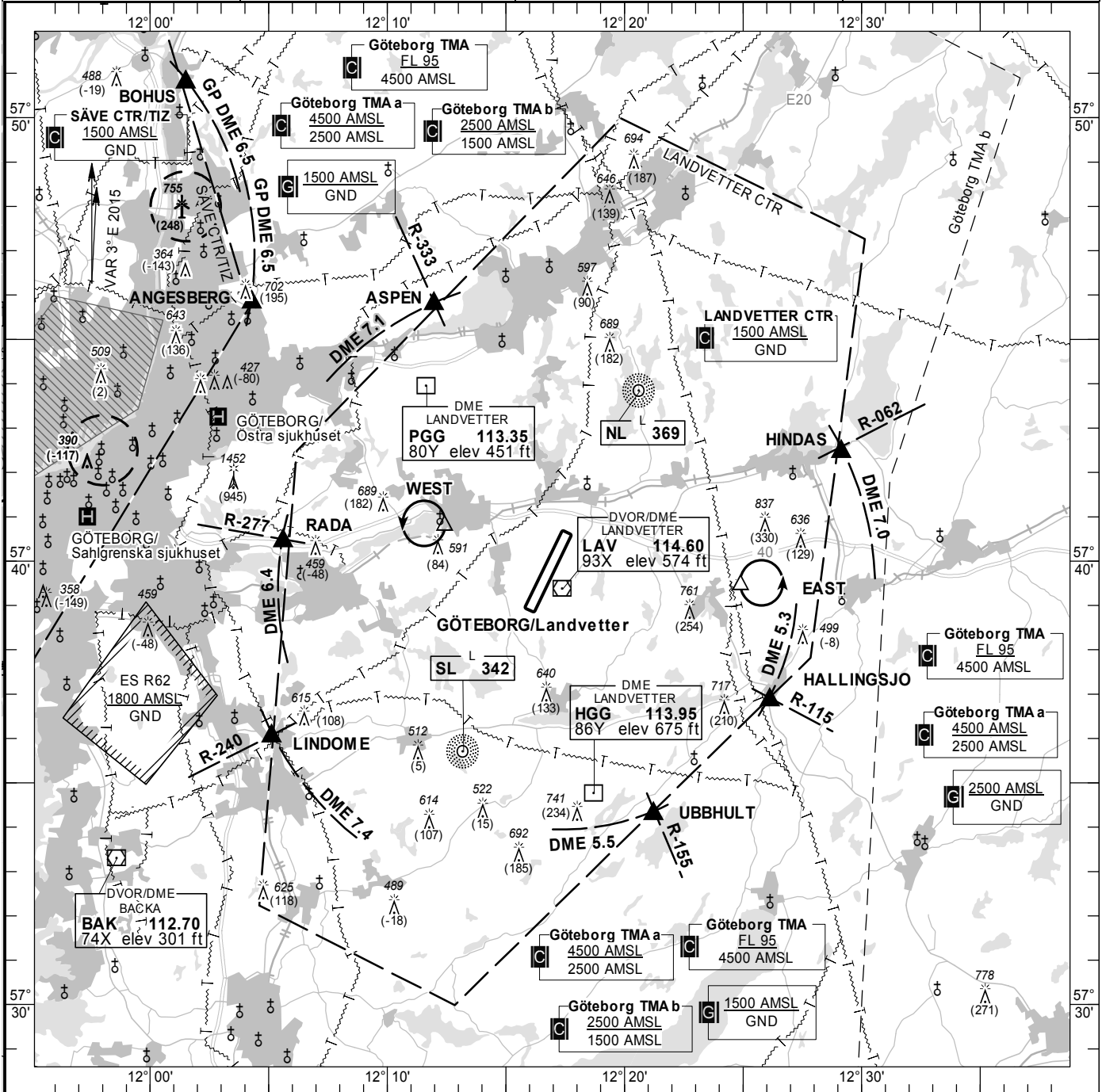
ELEV and ALT in ft
HGT in ft above AD ELEV

TA 5000 AMSL

LANDVETTER TOWER	118.600
	123.100
LANDVETTER GROUND	121.900
CLR DELIVERY	121.675
LANDVETTER APRON	121.600
LANDVETTER ATIS	118.375
	114.600

AD 2 ESGG 6-1

GÖTEBORG/Landvetter SWEDEN



Communication failure

Aircraft outside CTR having received no clearance should land at an aerodrome outside CTR and obtain clearance by telephone for further flight to Göteborg/Landvetter. If no suitable aerodrome is within reach;

- 1 SQUAWK 7600
- 2 Enter CTR via RADA to Holding WEST at or below 1500 ft AMSL. Transmit blind your intentions.
- 3 In holding stand by for optical signals from TWR.

Remark

Obstacle below 197 ft AGL not shown in CTR.

RWY NR	THR ELEV	PAPI (MEHT)
03	478.3 ft	Left/3.00° (59 ft)
21	506.4 ft	Left/3.00° (56 ft)

Legend
See GEN 2.3

Entry / exit point

ASPEN	574547N 0121200E
HINDAS	574227N 0122910E
HALLINGSJO	573651N 0122609E
UBBHULT	573417N 0122115E
LINDOME	573602N 0120509E
RADA	574026N 0120538E

Holding

EAST:	Hold south of road 40 and east of power line, east of point 573927N 0122502E
WEST:	Hold west of LANDVETTER church, west of point 574047N 0121232E