

**MIPS
 INSTRUMENT APPROACH CHART**

AD ELEV 1536

**NDB Z RWY 25
 NIEDERSTETTEN (ETHN)**

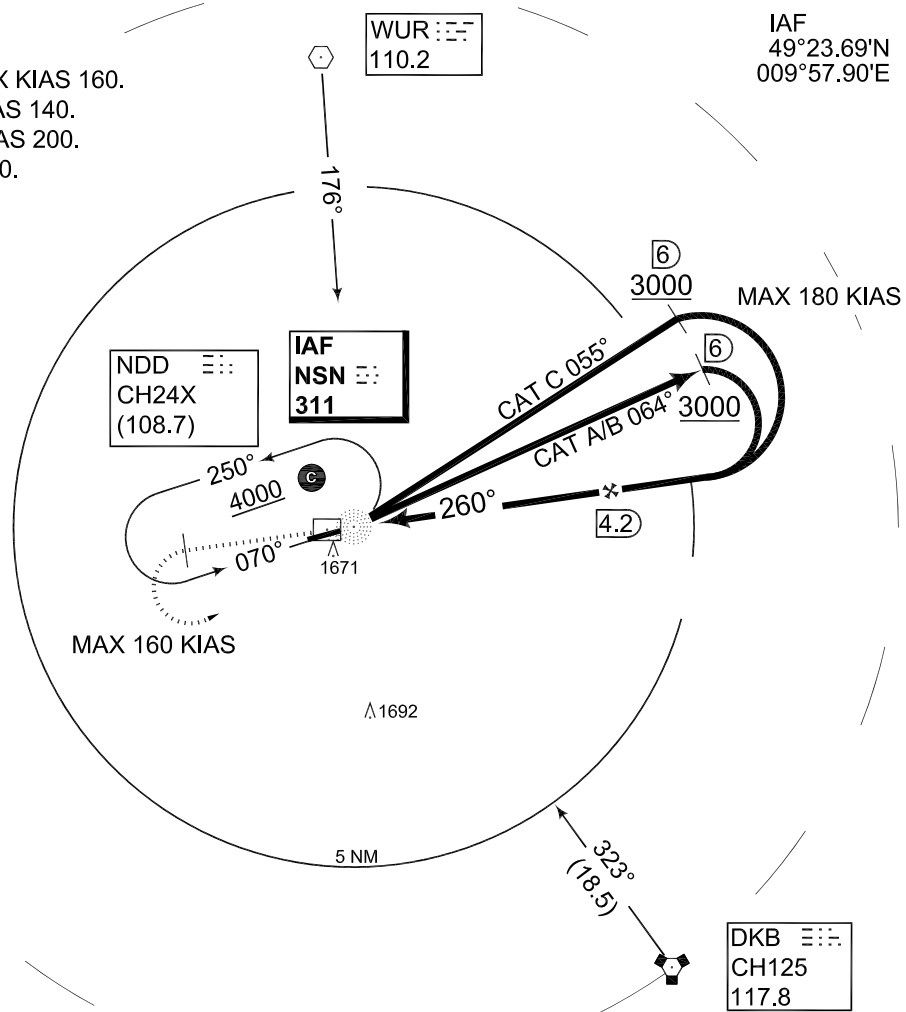
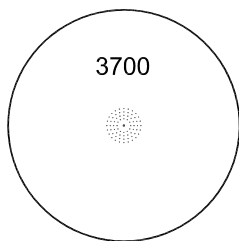
| | | | | | | | |
|---------------------------------|--------------------|--|-------------------------|----------------|--------------------------------|---------------------|-------------|
| LANGEN RADAR 398.650 135.725 | | STETTEN RADAR 251.250 139.300 135.600 | | | STETTEN TWR 280.600 122.100 | | |
| NDB NSN 311 | APP COURSE 260° | FAF ALT 3000 | Descent GR 5.9%/3.4° | MDA see CAT | TDZE 1535 | ALS-Length 600 M | LDA 3979 |

NOTE:

- a) MISSED APCH TURM MAX KIAS 160.
- b) CIRCLING CAT C MAX KIAS 140.
- c) HOLDING SPEED MAX KIAS 200.
- d) BASE TURN MAX KIAS 180.
- e) DME REQUIRED



MSA NSN 25 NM



EMERG SAFE ALT 100 NM 6400

MISSED APPROACH

- a) Climb on NSN NDB track 260° to 4000 ft. When passing 2500 ft turn left inbound NSN NDB.

| FAF - MAPt 3.7 NM | | | | | |
|-------------------|------|------|------|------|------|
| Knots | 60 | 90 | 120 | 150 | 180 |
| Min:Sec | 3:43 | 2:28 | 1:51 | 1:29 | 1:14 |

TA 5000

TDZE 1535

CAT I

| CATEGORY | A | B | C |
|-------------|-------------------------------------|---------------------------------|-------------------------------------|
| NDB Z 25 | 1970 - 1.2 435 (500-1.2/1.6) | | 2000 - 1.6 465 (500-1.6/2.0) |
| b) CIRCLING | 1970 - 1.6 434 (500-1.6) | 1990 - 1.6 454 (500-1.6) | 2100 - 2.4 564 (600-2.4) |

NDB Z RWY 25 49°23.51'N 009°57.49'E **NIEDERSTETTEN (ETHN)**

CHANGE: EDITORIAL (27/1/12)

AFSBw 13 DEC 2012