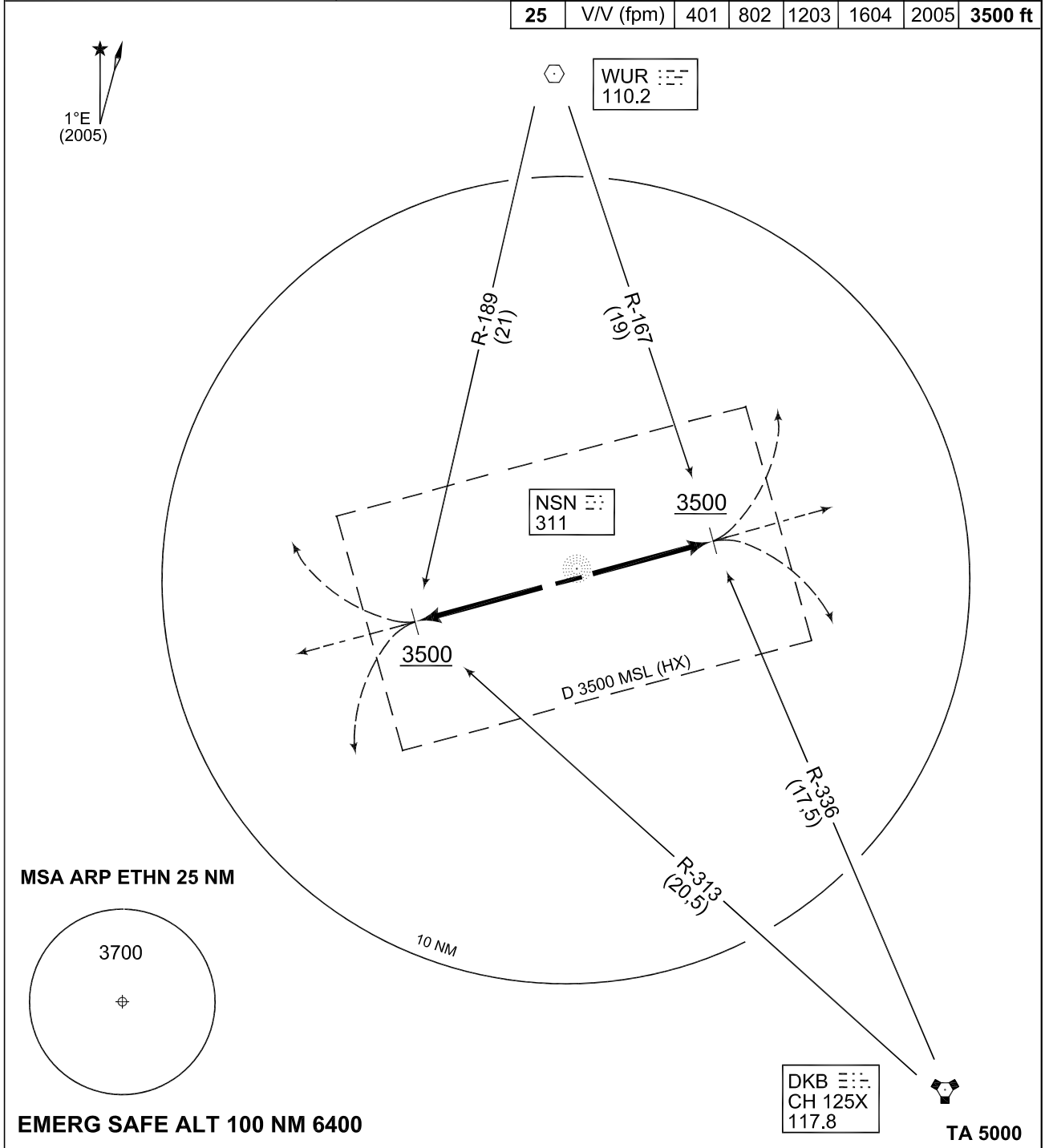


**TERPS** **OPERATIONAL INSTRUMENT DEPARTURE CHART** **AD ELEV 1536** **HN 107 - 125** **NIEDERSTETTEN (ETHN)**

STETTEN TWR 280.600 122.100	STETTEN RADAR 251.250 139.300 123.300	LANGEN RADAR 398.650 135.725						
	RWY	Knots	60	120	180	240	300	to
	07	V/V (fpm)	370	740	1110	1480	1850	3500 ft
	25	V/V (fpm)	401	802	1203	1604	2005	3500 ft



CHANGE: EDITORIAL (27/1/12)

HN 107 (RWY 07)	<ul style="list-style-type: none"> <li>- Departure end crossing altitude 1570 ft MSL</li> <li>- Climb straight ahead to 3500 ft</li> <li>- Continue as cleared by ATC</li> </ul>
HN 125 (RWY 25)	<ul style="list-style-type: none"> <li>- Departure end crossing altitude 1570 ft MSL</li> <li>- Climb straight ahead to 3500 ft</li> <li>- Continue as cleared by ATC</li> </ul>

**HN 107 - 125**

49°23.51'N  
 009°57.49'E

**NIEDERSTETTEN (ETHN)**

AFSBw 13 DEC 2012