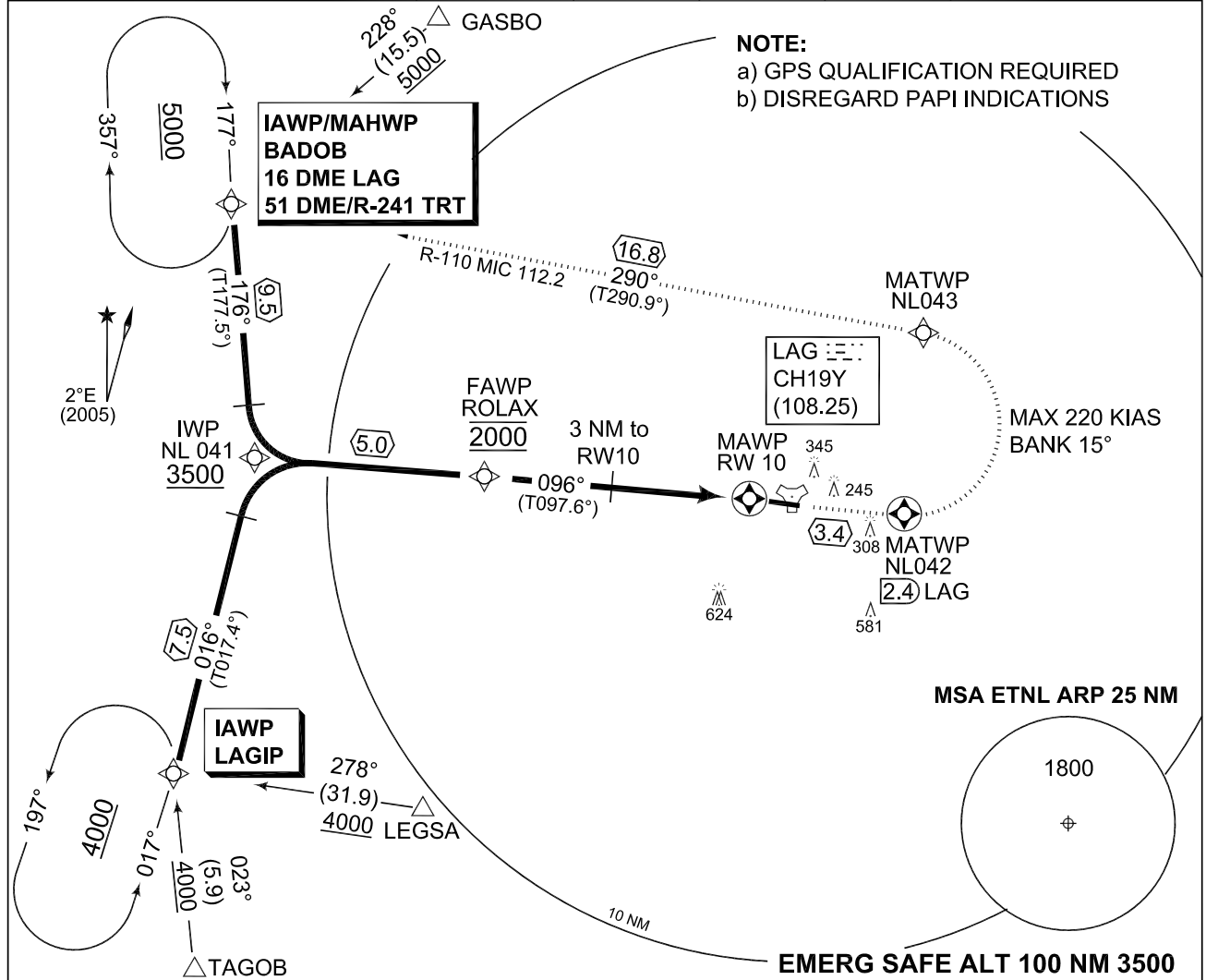


**PANS-OPS
 INSTRUMENT APPROACH CHART**

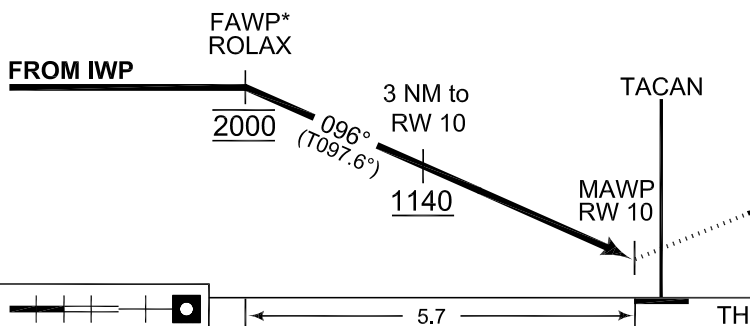
AD ELEV 140

**RNAV (GPS) RWY 10
 LAAGE (ETNL)**

BREMEN RADAR 259.825 124.175		LAAGE RADAR 358.650 133.625		LAAGE TWR 336.400 257.800 118.425			
TACAN LAG CH19Y (108.25)	APP COURSE 096°	FAWP ALT 2000	Descent GR 3.0°/5.2%	MDA 560	THR ELEV 139	ALS-Length 900 M	LDA 8268



*VERTICAL FLY-BY APPROVED



MISSED APPROACH TA 5000

1. Non TACAN equipped acft:
Climb straight ahead to 2.4 DME LAG, LT, to intercept R-110 MIC, on R-110 MIC to BADOB.
2. TACAN equipped acft:
Execute TACAN missed approach.

GPS: NL042-NL043-BADOB [A5000]

	TCH 42				
DIST THR	5	4	3	2	1
ALTITUDE	1780	1460	1140	820	500

CHANGE: CORRECTION VAR (46/12)

CATEGORY	A	B	C	D	E
MINIMA ACCORDING TO PANS-OPS CRITERIA					
GPS 10	560 - 0.8 421 (500-0.8/1.6)		560 - 1.2 421 (500-1.2/2.0)		560 - 1.6 421 (500-1.6/2.4)

RNAV (GPS) RWY 10

53°55.09'N
 012°16.76'E

LAAGE (ETNL)

AFSBw 03 MAY 2012

**PANS-OPS
INSTRUMENT APPROACH CHART**

**WAY POINT LIST RWY 10
LAAGE (ETNL)**

RWY 10 from BADOB APPROACH RNAV (GPS)

BADOB (IAWP)	54 06 06.32 N	011 56 55.95 E
NL 041 (IWP)	53 56 35.05 N	011 57 38.83 E
ROLAX (FAWP)	53 55 55.94 N	012 06 02.27 E
RW 10 (MAWP)	53 55 10.56 N	012 15 37.01 E
NL 042 (MATWP 2.4 DME LAG)	53 54 43.53 N	012 21 14.87 E
NL 043 (MATWP)	54 00 08.99 N	012 23 36.26 E
BADOB (MAHWP)	54 06 06.32 N	011 56 55.95 E

RWY 10 from LAGIP APPROACH RNAV (GPS)

LAGIP (IAWP)	53 49 29.16 N	011 53 53.20 E
NL 041 (IWP)	53 56 35.05 N	011 57 38.83 E
ROLAX (FAWP)	53 55 55.94 N	012 06 02.27 E
RW 10 (MAWP)	53 55 10.56 N	012 15 37.01 E
NL 042 (MATWP 2.4 DME LAG)	53 54 43.53 N	012 21 14.87 E
NL 043 (MATWP)	54 00 08.99 N	012 23 36.26 E
BADOB (MAHWP)	54 06 06.32 N	011 56 55.95 E

To enhance VNAV Operation for FMS aircraft, following additional data are provided:

RWY 10 - NL 710, 3 NM to RW 10	53 55 34.48 N	012 10 35.25 E	A 1140
--------------------------------	---------------	----------------	--------

Threshold Coordinates

RWY 10	53 55 10.56 N	012 15 37.01 E
--------	---------------	----------------

CHANGE: CORRECTION VAR (46/12)

AFSBw 03 MAY 2012

WAY POINT LIST RWY 10

LAAGE (ETNL)