

**PANS-OPS  
 INSTRUMENT APPROACH CHART**

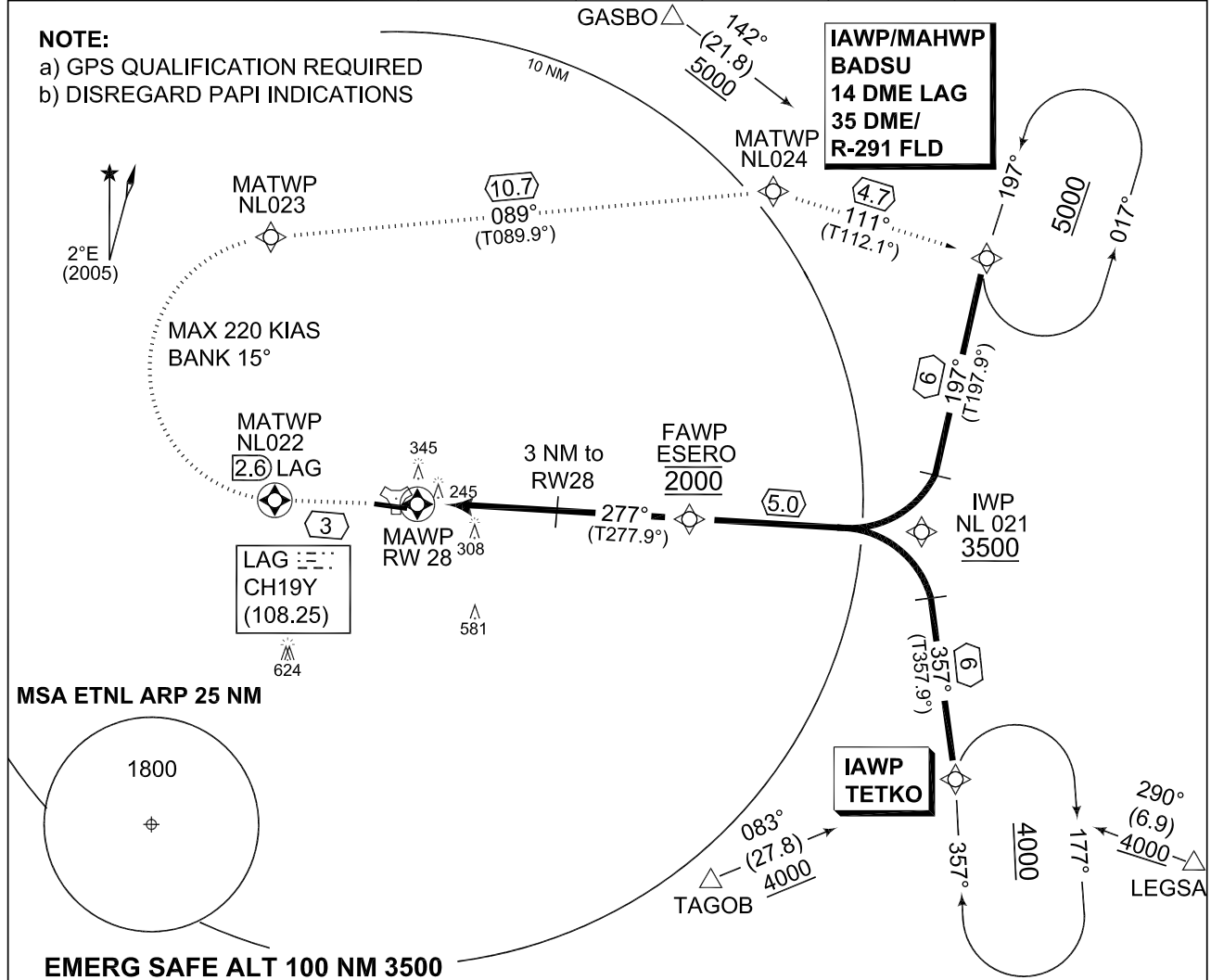
**RNAV (GPS) RWY 28  
 LAAGE (ETNL)**

AD ELEV 140

BREMEN RADAR 259.825 124.175		LAAGE RADAR 358.650 133.625		LAAGE TWR 336.400 257.800 118.425			
TACAN LAG CH19Y (108.25)	APP COURSE 277°	FAWP ALT 2000	Descent GR 3.0°/5.2%	MDA 560	THR ELEV 111	ALS-Length 900 M	LDA 8268

**NOTE:**

- a) GPS QUALIFICATION REQUIRED
- b) DISREGARD PAPI INDICATIONS

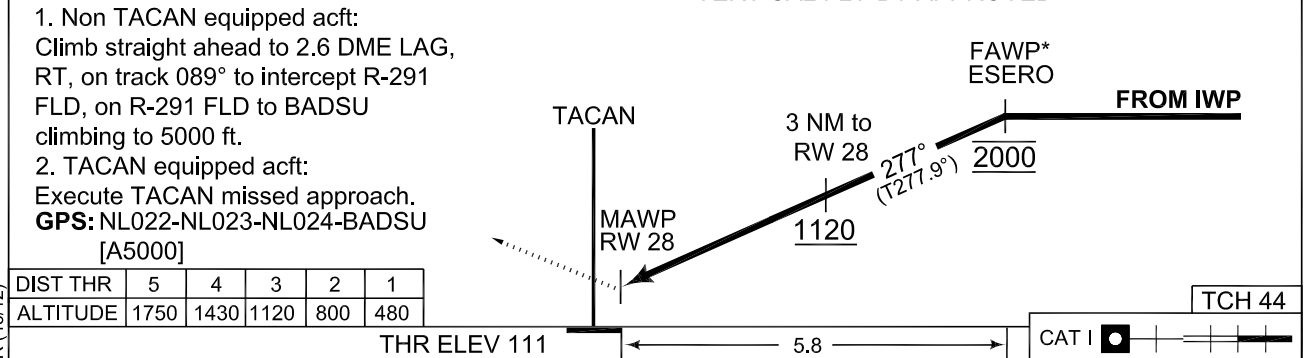


**MISSED APPROACH**

- 1. Non TACAN equipped acft:  
 Climb straight ahead to 2.6 DME LAG, RT, on track 089° to intercept R-291 FLD, on R-291 FLD to BADSU climbing to 5000 ft.
  - 2. TACAN equipped acft:  
 Execute TACAN missed approach.
- GPS:** NL022-NL023-NL024-BADSU [A5000]

\*VERTICAL FLY-BY APPROVED

TA 5000



DIST THR	5	4	3	2	1
ALTITUDE	1750	1430	1120	800	480

CATEGORY	A	B	C	D	E
<b>MINIMA ACCORDING TO PANS-OPS CRITERIA</b>					
GPS 28	<b>560</b> - 0.8 449 (500-0.8/1.6)		<b>560</b> - 1.2 449 (500-1.2/2.0)		<b>560</b> - 1.6 449 (500-1.6/2.4)

**RNAV (GPS) RWY 28**

53°55.09'N  
 012°16.76'E

**LAAGE (ETNL)**

CHANGE: CORRECTION VAR (46/12)

AFSBw 03 MAY 2012

**PANS-OPS  
INSTRUMENT APPROACH CHART**

**WAY POINT LIST RWY 28  
LAAGE (ETNL)**

**RWY 28 from BADSU APPROACH RNAV (GPS)**

BADSU (IAWP)	53 59 13.16 N	012 39 09.83 E
NL 021 (IWP)	53 53 31.28 N	012 36 01.89 E
ESERO (FAWP)	53 54 12.42 N	012 27 39.55 E
RW 28 (MAWP)	53 54 59.64 N	012 17 53.86 E
NL 022 (MATWP 2.6 DME LAG)	53 55 23.66 N	012 12 52.14 E
NL 023 (MATWP)	54 00 59.54 N	012 13 28.48 E
NL 024 (MATWP)	54 00 59.97 N	012 31 46.02 E
BADSU (MAHWP)	53 59 13.16 N	012 39 09.83 E

**RWY 28 from TETKO APPROACH RNAV (GPS)**

TETKO (IAWP)	53 47 32.06 N	012 36 23.60 E
NL 021 (IWP)	53 53 31.28 N	012 36 01.89 E
ESERO (FAWP)	53 54 12.42 N	012 27 39.55 E
RW 28 (MAWP)	53 54 59.64 N	012 17 53.86 E
NL 022 (MATWP 2.6 DME LAG)	53 55 23.66 N	012 12 52.14 E
NL 023 (MATWP)	54 00 59.54 N	012 13 28.48 E
NL 024 (MATWP)	54 00 59.97 N	012 31 46.02 E
BADSU (MAHWP)	53 59 13.16 N	012 39 09.83 E

To enhance VNAV Operation for FMS aircraft, following additional data are provided:

RWY 28 - NL 728, 3 NM to RW 28 53 54 35.42 N 012 22 55.48 E A 1120

**Threshold Coordinates**

RWY 28 53 54 59.64 N 012 17 53.86 E

CHANGE: CORRECTION VAR (46/12)

AFSBw 03 MAY 2012

**WAY POINT LIST RWY 28**

**LAAGE (ETNL)**