

**MIPS
 INSTRUMENT APPROACH CHART**

AD ELEV 140

**ILS or LOC Y RWY 10
 LAAGE (ETNL)**

BREMEN RADAR 259.825 124.175		LAAGE RADAR 358.650 133.625		LAAGE TWR 336.400 257.800 118.425			
TACAN/LLZ LAG CH19Y/ILAE 108.55	APP COURSE 095°	GS INCP T ALT 2000	GS 3.0°	DA see CAT	TDZE 139	ALS-Length 900 M	LDA 8268

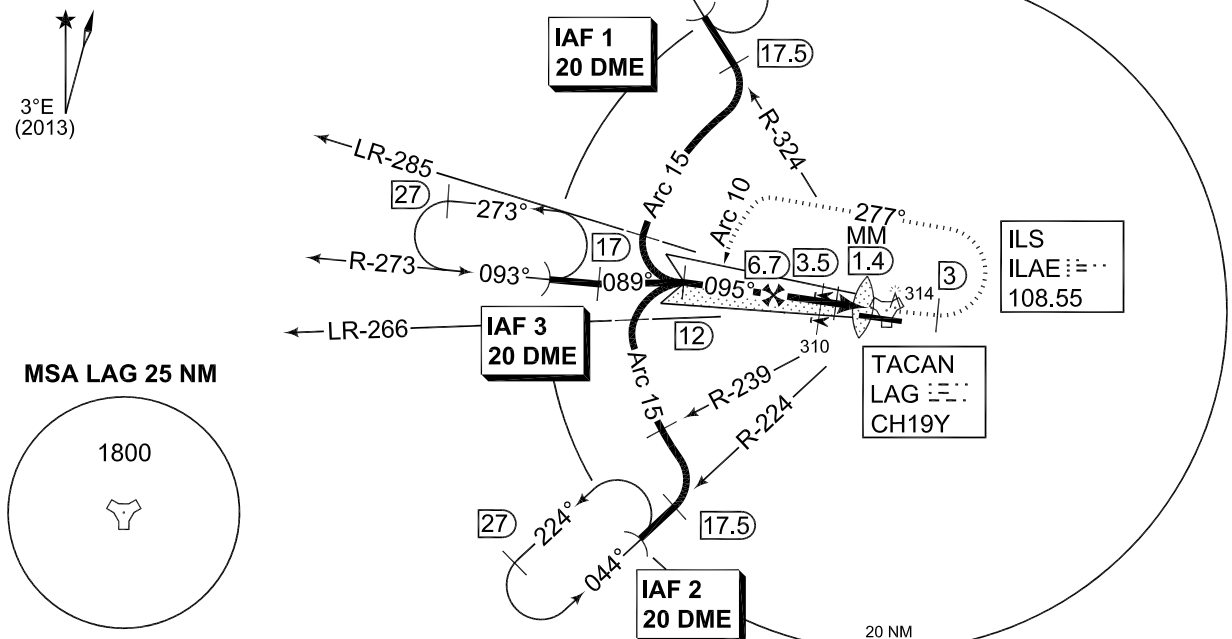
NOTE:

- a) TIMING NOT AUTHORIZED FOR DEFINING THE MAP
- b) NON STANDARD PROCEDURE (DEAD RECKONING INTERCEPTS LOC WITH 6.0° ONLY)
- c) FOR MILITARY USE ONLY
- d) PAPI AND ILS GLIDEPATH DO NOT COINCIDE
- e) TACAN REQUIRED
- f) MISSED APCH TURN LIMITED TO 250KT IAS MAX
- g) CIRCLING CAT C LIMITED TO 155KT IAS MAX
 CIRCLING CAT D LIMITED TO 180KT IAS MAX
 CIRCLING NOT AUTHORIZED N OF RWY 28/10

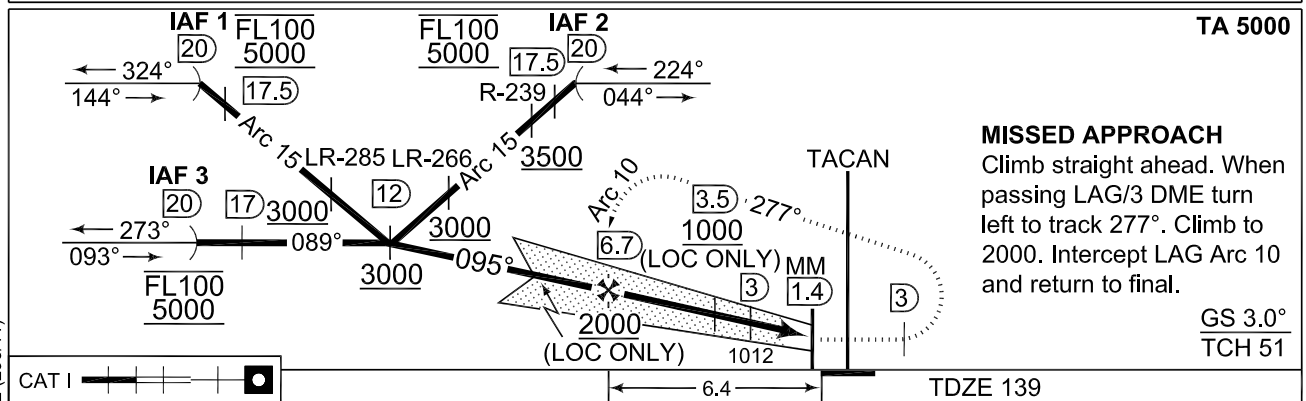
IAF 1
 54°11.91'N
 011°58.64'E

IAF2
 53°41.53'N
 011°52.58'E

IAF3
 53°57.03'N
 011°43.49'E



EMERG SAFE ALT 100 NM 3500



CHANGE: NEW PROCEDURE (296/11)

CATEGORY	A	B	C	D	E
ILS Y 10	339 - 0.8/550 200 (200-0.8/1.2)				358 - 0.8/550 216 (300-0.8/1.6)
LOC Y 10	490 - 0.8 351 (400-0.8/1.6)		490 - 1.2 351 (400-1.2/1.6)		490 - 1.2 351 (400-1.2/2.0)
CIRCLING	540 - 1.6 400 (400-1.6)	640 - 1.6 500 (500-1.6)	740 - 3.2 600 (600-3.2)	1200 - 4.8 1060 (1100-4.8)	1450 - 4.8 1310 (1400-4.8)

ILS or LOC Y RWY 10

53°55.09'N
 012°16.76'E

LAAGE (ETNL)

AFSBw 25 JUL 2013