

**MIPS**  
**INSTRUMENT APPROACH CHART**

AD ELEV 140

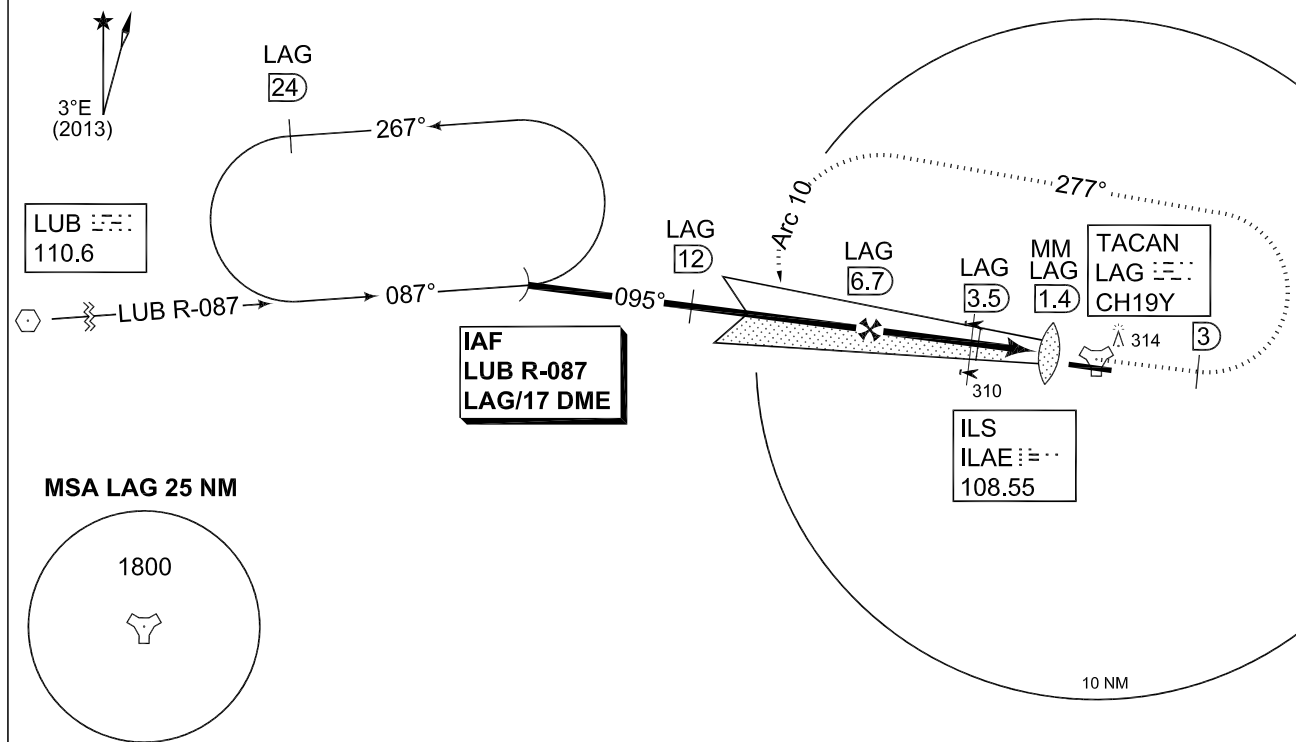
**ILS or LOC Z RWY 10**  
**LAAGE (ETNL)**

BREMEN RADAR 259.825 124.175		LAAGE RADAR 358.650 133.625		LAAGE TWR 336.400 257.800 118.425			
TACAN/LLZ LAG CH19Y/LAE 108.55	APP COURSE 095°	GS INCPT ALT 2000	GS 3.0°	DA <b>see CAT</b>	TDZE 139	ALS-Length 900 M	LDA 8268

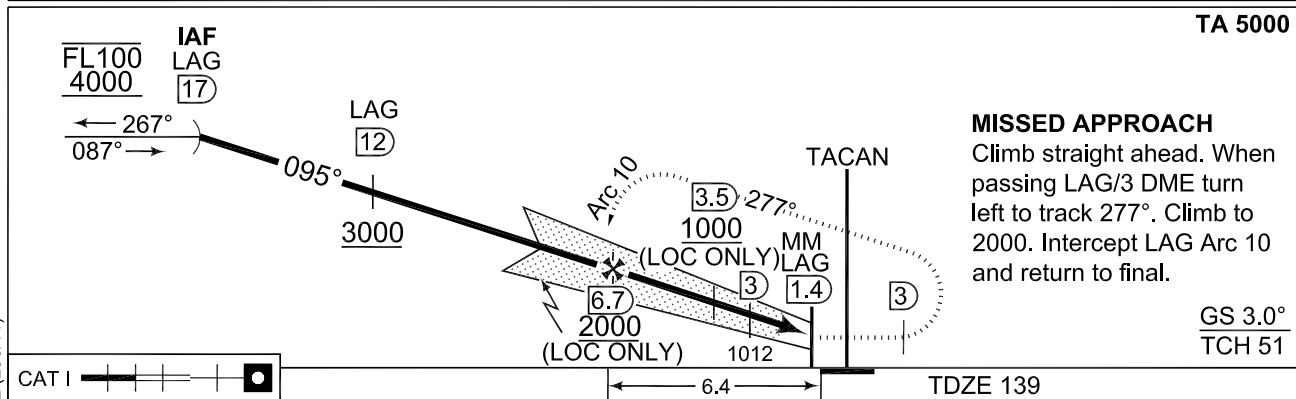
**NOTE:**

- a) PAPI AND ILS GLIDEPATH DO NOT COINCIDE
- b) DME REQUIRED
- c) MISSED APCH TURN LIMITED TO 250KT IAS MAX
- d) CIRCLING CAT C LIMITED TO 155KT IAS MAX  
CIRCLING CAT D LIMITED TO 180KT IAS MAX  
CIRCLING NOT AUTHORIZED N OF RWY 28/10

IAF  
53°57.26'N  
011°48.64'E



**EMERG SAFE ALT 100 NM 3500**



**MISSED APPROACH**  
Climb straight ahead. When passing LAG/3 DME turn left to track 277°. Climb to 2000. Intercept LAG Arc 10 and return to final.

CATEGORY	A	B	C	D	E
ILS Z 10	<b>339</b> - 0.8/550 200 (200-0.8/1.2)				<b>358</b> - 0.8/550 216 (300-0.8/1.6)
LOC Z 10	<b>490</b> - 0.8 351 (400-0.8/1.6)		<b>490</b> - 1.2 351 (400-1.2/1.6)	<b>490</b> - 1.2 351 (400-1.2/2.0)	
CIRCLING	<b>540</b> - 1.6 400 (400-1.6)	<b>640</b> - 1.6 500 (500-1.6)	<b>740</b> - 3.2 600 (600-3.2)	<b>1200</b> - 4.8 1060 (1100-4.8)	<b>1450</b> - 4.8 1310 (1400-4.8)

**ILS or LOC Z RWY 10**

53°55.09'N  
012°16.76'E

**LAAGE (ETNL)**

CHANGE: NEW PROCEDURE (296/11)

AFSBw 25 JUL 2013