

**MIPS INSTRUMENT APPROACH CHART**

**ILS or LOC Z RWY 28  
LAAGE (ETNL)**

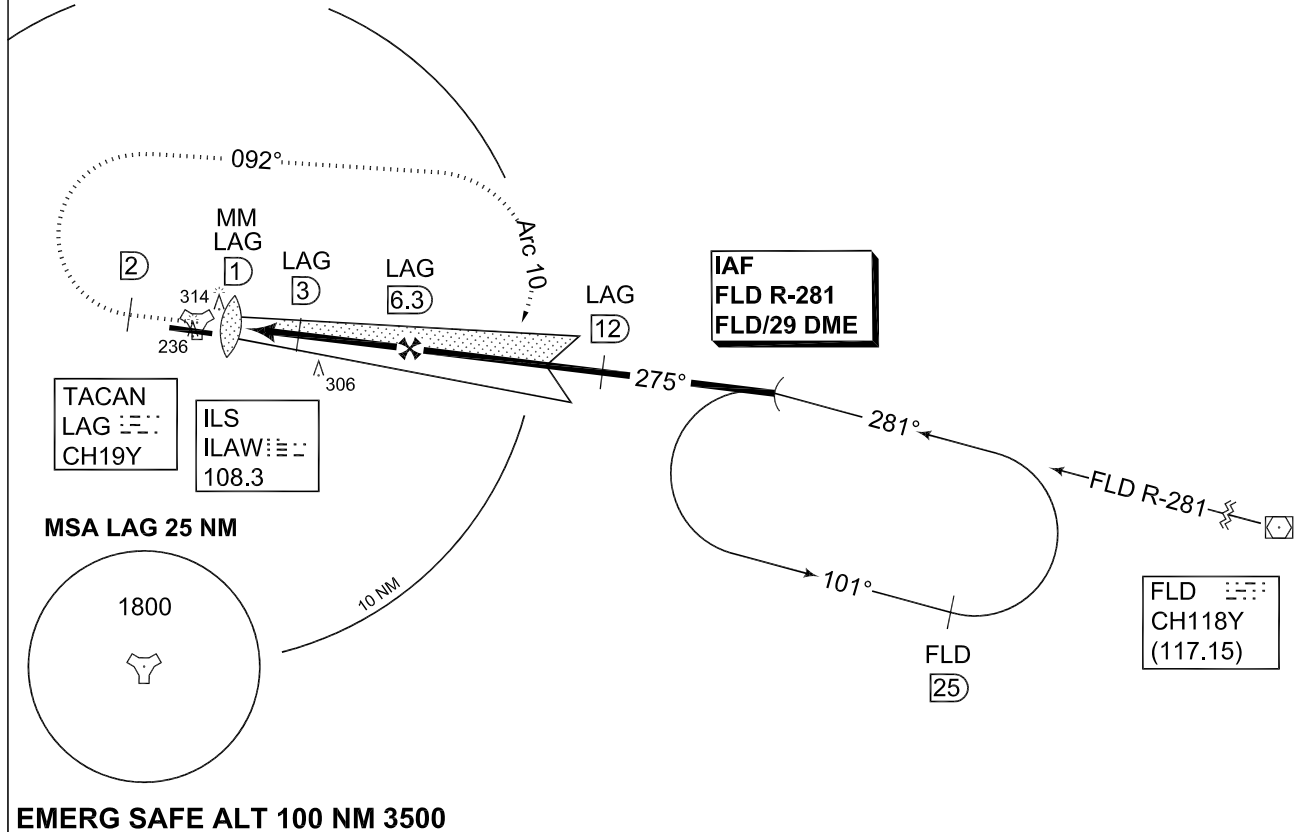
AD ELEV 140

BREMEN RADAR 259.825 124.175		LAAGE RADAR 358.650 133.625		LAAGE TWR 336.400 257.800 118.425			
TACAN/LOC LAG CH19Y/ILAW 108.3	APP COURSE 275°	GS INCPT ALT 2000	GS 3.0°(5.2%)	DA see CAT	TDZE 133	ALS-Length 900 M	LDA 8268

**NOTE:**

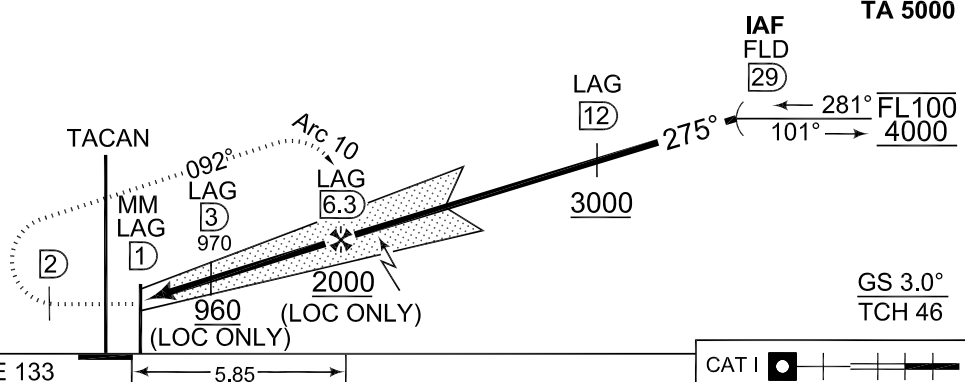
- a) PAPI AND ILS GLIDEPATH DO NOT COINCIDE
- b) DME REQUIRED
- c) MISSED APCH TURN LIMITED TO 250KT IAS MAX
- d) CIRCLING CAT C LIMITED TO 155KT IAS MAX  
CIRCLING CAT D LIMITED TO 180KT IAS MAX  
CIRCLING NOT AUTHORIZED N OF RWY 28/10

IAF  
53°52.71'N  
012°45.61'E



**MISSED APPROACH**

Climb straight ahead. When passing LAG/2 DME turn right to track 092°. Climb to 2000. Intercept LAG Arc 10 and return to final.



CATEGORY	A	B	C	D	E
ILS Z 28	333 - 550 200 (200-0.8/1.2)				363 - 550 230 (300-0.8/1.6)
LOC Z 28	450 - 0.8 317 (400-0.8/1.6)		450 - 1.2 317 (400-1.2/1.6)		450 - 1.2 317 (400-1.2/2.0)
d) CIRCLING	540 - 1.6 400 (400-1.6)	640 - 1.6 500 (500-1.6)	740 - 3.2 600 (600-3.2)	1200 - 4.8 1060 (1100-4.8)	1450 - 4.8 1310 (1400-4.8)

**ILS or LOC Z RWY 28**

53°55.09'N  
012°16.76'E

**LAAGE (ETNL)**

CHANGE: NEW PROCEDURE (296/11)

AFSBw 25 JUL 2013