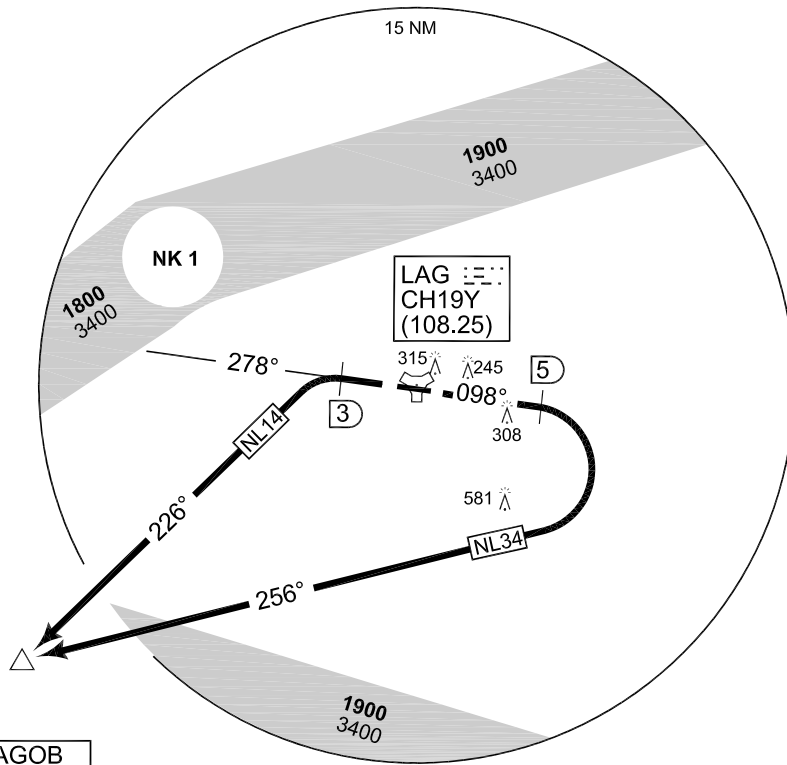
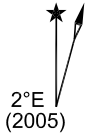


**TERPS  
INSTRUMENT DEPARTURE CHART**

AD ELEV 140

**NL 14 - 34  
LAAGE (ETNL)**

LAAGE TWR 336.400 118.425		LAAGE RADAR 358.650 133.625				BREMEN RADAR 259.825 124.175				
		RWY	Knots	60	120	180	240	300	360	to
		28	V/V (fpm)	250	500	750	1000	1250	1500	3500 ft
		10	V/V (fpm)	230	460	690	920	1150	1380	1800 ft



**TAGOB**  
53°44.08'N  
011°49.98'E

15 NM

NK 1

1900  
3400

278°

226°

256°

1900  
3400

1800

315

245

098°

308

581

5

3

NL 14

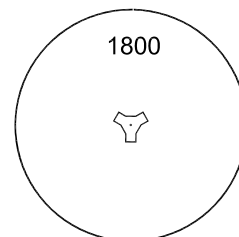
NL 34

LAG

CH19Y

(108.25)

**MSA LAG 25 NM**



**TA 5000**

**EMERG SAFE ALT 100 NM 3500**

NL 14 (RWY 28)	<ul style="list-style-type: none"> <li>- Climb on track 278° to LAG/3 DME.</li> <li>- Turn left and proceed on track 226° to TAGOB</li> <li>- INITIAL CLIMB: 4000 ft</li> </ul>
NL 34 (RWY 10)	<ul style="list-style-type: none"> <li>- Climb on track 098° to LAG/5 DME</li> <li>- Turn right and proceed on track 256° to TAGOB</li> <li>- INITIAL CLIMB: 4000 ft</li> </ul>

CHANGE: NLFS (155/12)

AFSBw 18 OCT 2012

**NL 14 - 34**

53°55.09' N  
012°16.76' E

**LAAGE (ETNL)**