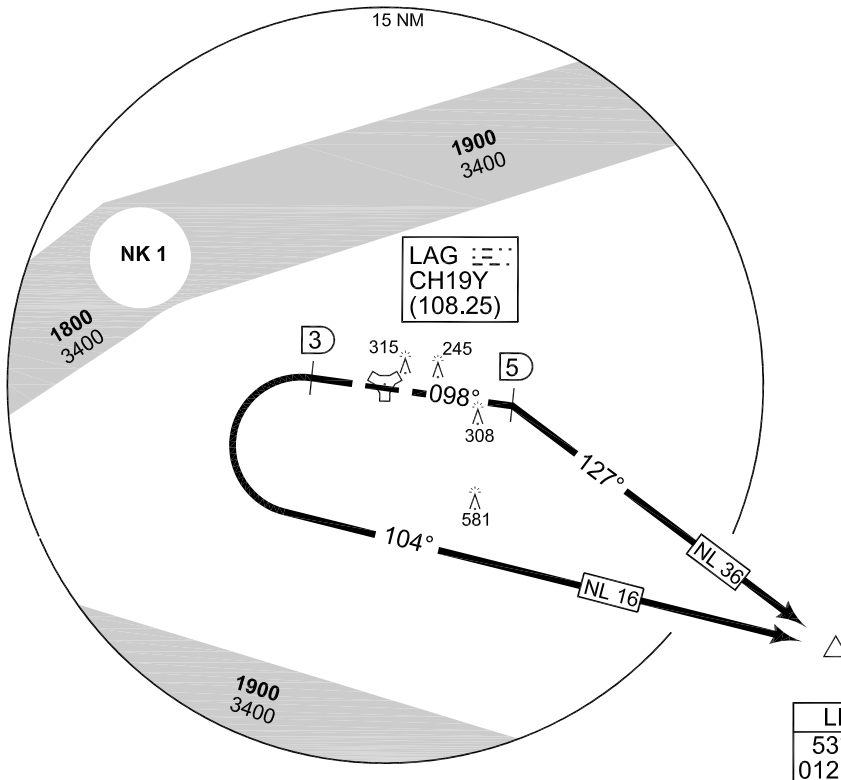
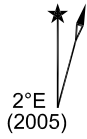


**TERPS
 INSTRUMENT DEPARTURE CHART**

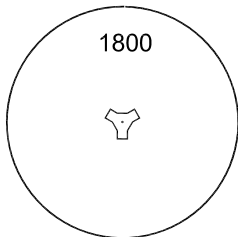
AD ELEV 140

**NL 16 - 36
 LAAGE (ETNL)**

LAAGE TWR 336.400 118.425	LAAGE RADAR 358.650 133.625	BREMEN RADAR 259.825 124.175							
	RWY	Knots	60	120	180	240	300	360	to
	28	V/V (fpm)	250	500	750	1000	1250	1500	3500 ft
	10	V/V (fpm)	230	460	690	920	1150	1380	1800 ft



MSA LAG 25 NM



EMERG SAFE ALT 100 NM 3500

TA 5000

CHANGE: NLF5 (155/12)

NL 16 (RWY 28)	- Climb on track 278° to LAG/3 DME - Turn left and proceed on track 104° to LEGSA - INITIAL CLIMB: 4000 ft
NL 36 (RWY 10)	- Climb on track 098° to LAG/5 DME - Turn right and proceed on track 127° to LEGSA - INITIAL CLIMB: 4000 ft

AFSBw 18 OCT 2012

NL 16 - 36

53°55.09' N
 012°16.76' E

LAAGE (ETNL)