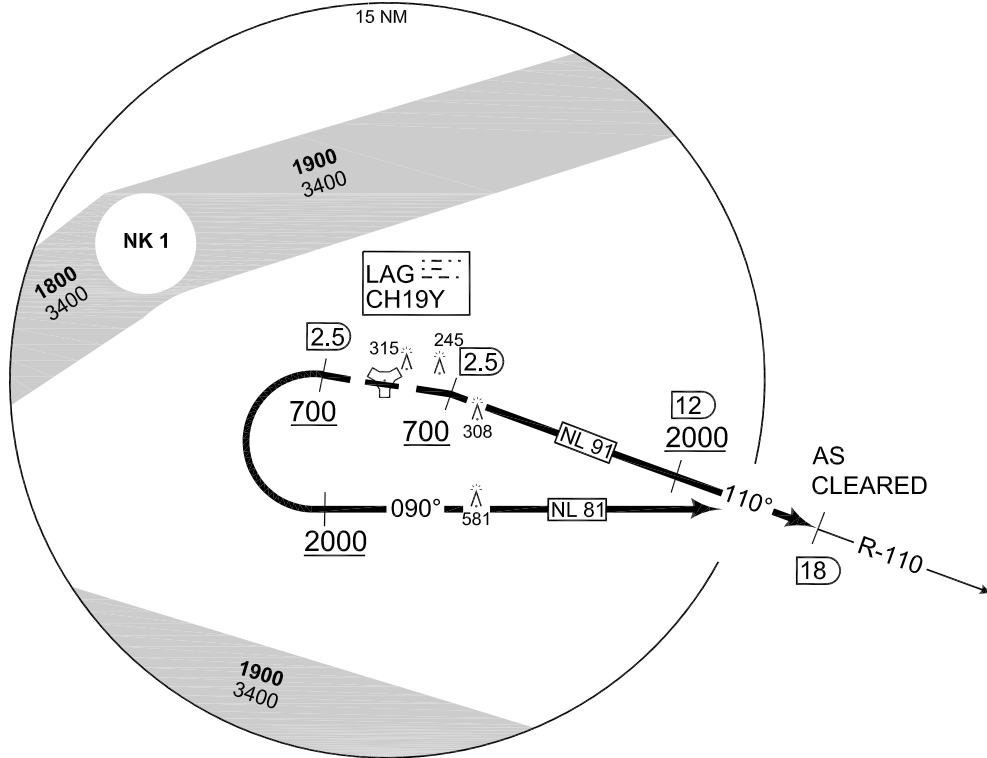
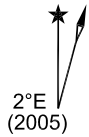


**TERPS  
INSTRUMENT DEPARTURE CHART**

AD ELEV 140

**NL 81 - 91  
LAAGE (ETNL)**

LAAGE TWR 336.400 118.425	LAAGE RADAR 358.650 133.625					BREMEN RADAR 259.825 124.175				
	RWY	Knots	60	120	180	240	300	360	to	
	28	V/V (fpm)	456	912	1368	1824	2280	2736	3500 ft	
	10	V/V (fpm)	271	542	813	1084	1355	1626	1800 ft	



TA 5000

EMERG SAFE ALT 100 NM 3500

NL 81 (RWY 28) <b>(29)</b>	<ul style="list-style-type: none"> <li>- Climb straight ahead</li> <li>- Pass LAG/2.5 DME at 700 ft or above</li> <li>- Turn left on heading 090° to intercept LAG R-110 outbound.</li> <li>- Intercept heading 090° at 2000 ft or above</li> <li>- Pass LAG R-110/18 DME as cleared by ATC</li> <li>- INITIAL CLIMB: 4000 ft</li> </ul>
NL 91 (RWY 10) <b>(17)</b>	<ul style="list-style-type: none"> <li>- Climb straight ahead</li> <li>- Pass LAG/2.5 DME at 700 ft or above</li> <li>- Turn right to intercept LAG R-110 outbound</li> <li>- Pass LAG R-110/12 DME at 2000 ft or above and 18 DME as cleared by ATC</li> <li>- INITIAL CLIMB: 4000 ft</li> </ul>

CHANGE: NLFS (155/12)

AFSBw 18 OCT 2012

**NL 81 - 91**

53°55.09' N  
012°16.76' E

**LAAGE (ETNL)**