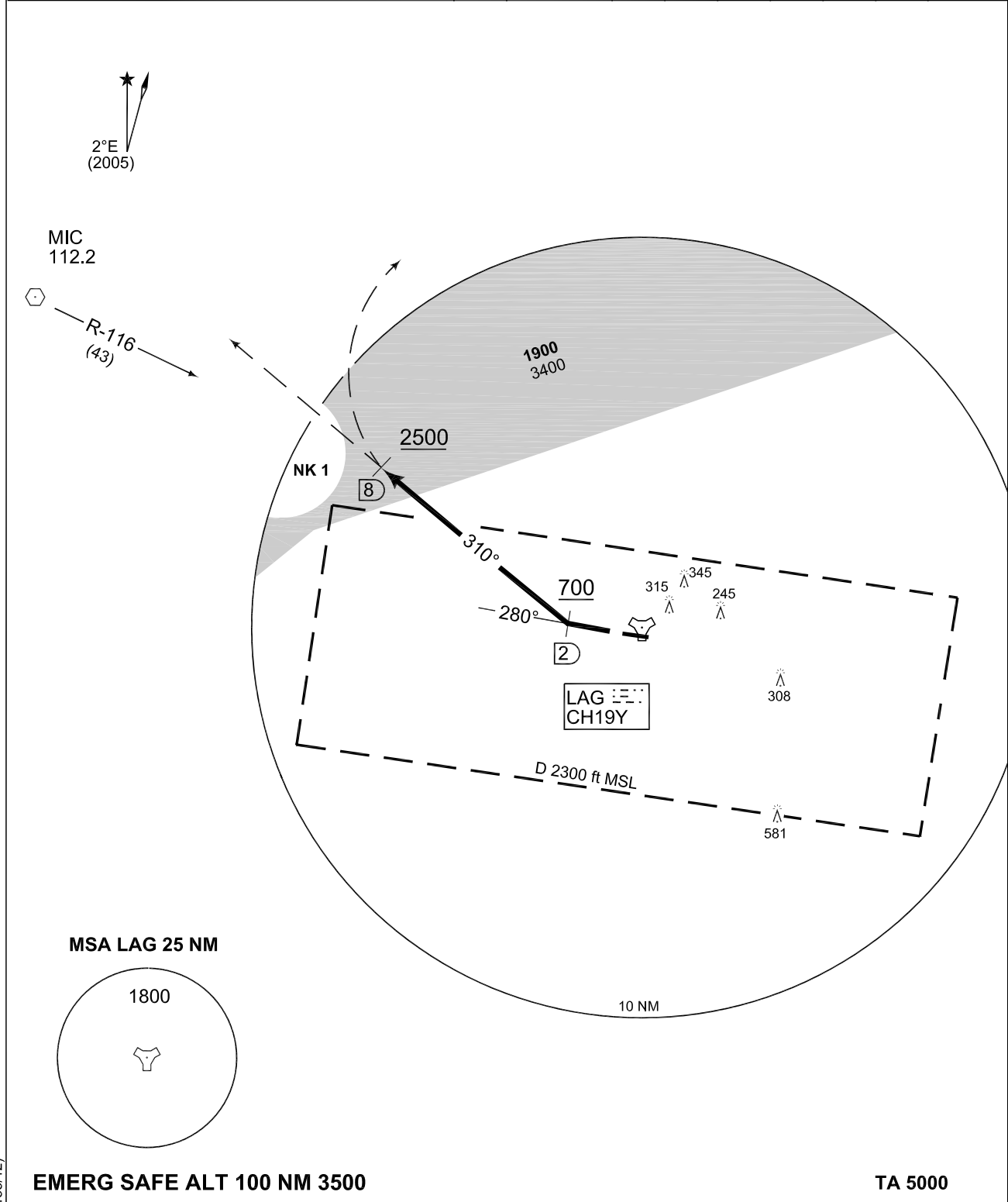


TERPS
OPERATIONAL INSTRUMENT DEPARTURE CHART NL 228
LAAGE (ETNL)

LAAGE TWR 336.400 118.425	LAAGE RADAR 358.650 133.625	BREMEN RADAR 259.825 124.175
	RWY	Knots
	28	V/V (fpm)
	60	120
	180	240
	300	360
	to	1900 ft



EMERG SAFE ALT 100 NM 3500

TA 5000

- | | |
|--------------------|---|
| NL 228
(RWY 28) | <ul style="list-style-type: none"> - Climb on track 280° to LAG/2DME, pass 2 DME at 700 ft or above - Turn right and proceed on track 310° to LAG/8 DME, pass 8 DME at 2500 ft or above - Continue as cleared by ATC - INITIAL CLIMB: 4000 ft |
|--------------------|---|

NL 228

53°55.09' N
012°16.76' E

LAAGE (ETNL)

CHANGE: NLFS (155/12)

AFSBw 18 OCT 2012