

TERPS INSTRUMENT APPROACH CHART

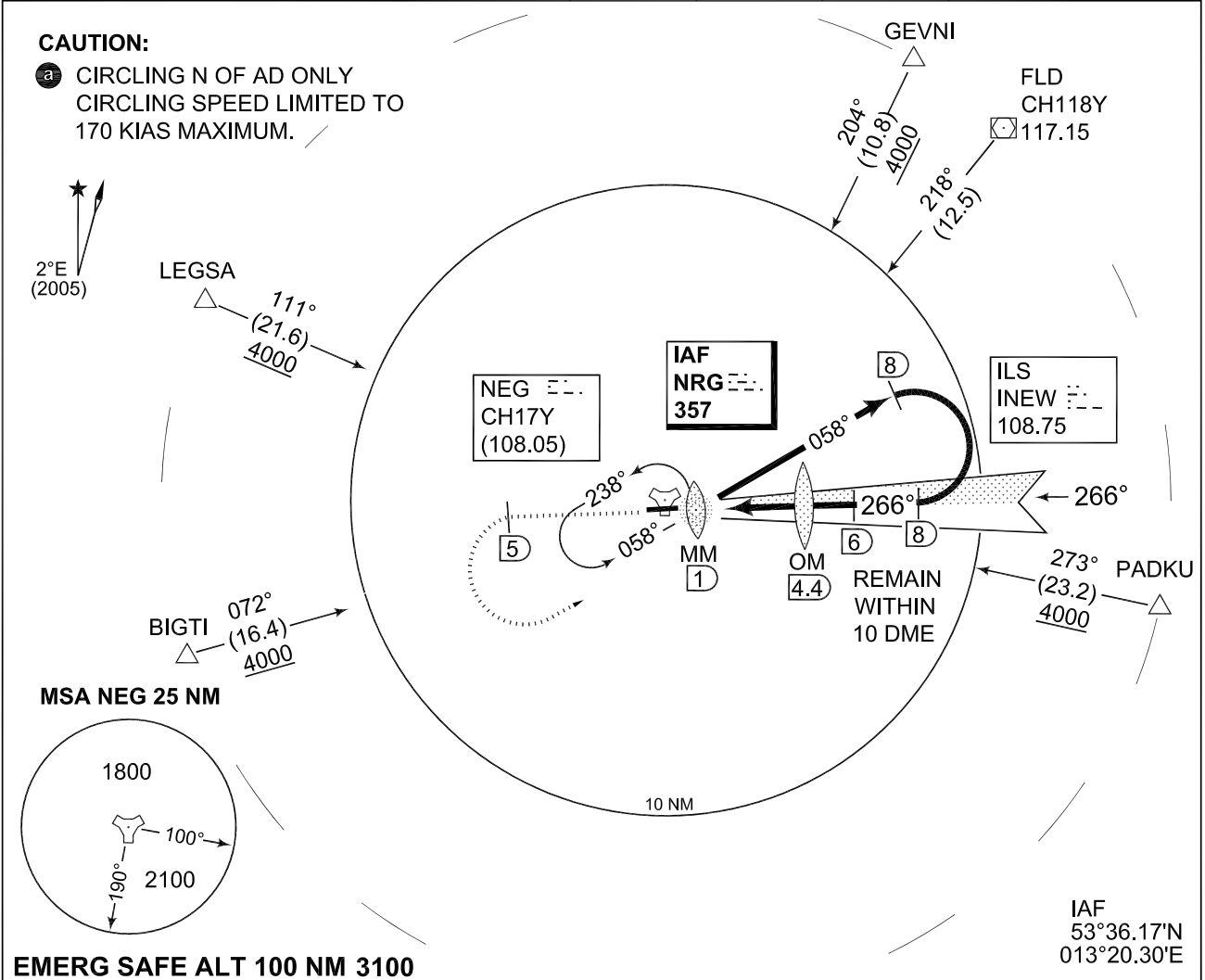
AD ELEV 228

ILS RWY 27 NEUBRANDENBURG (ETNU)

BREMEN RADAR 373.975 134.650		NEUBRANDENBURG TWR 369.350 119.175					
LOCALIZER INEW 108.75	APP COURSE 266°	GS INTCP ALT 1526	GS 3.0°	DA 428	TDZE 228	ALS-Length 840 M	LDA 7522

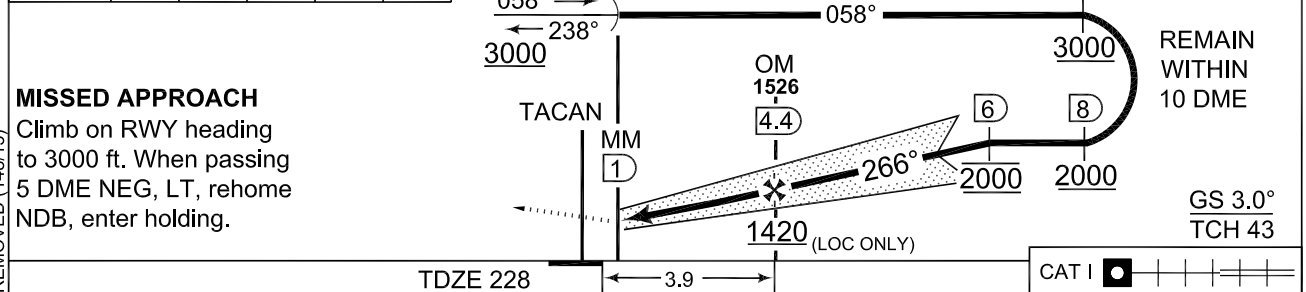
CAUTION:

- a** CIRCLING N OF AD ONLY
 CIRCLING SPEED LIMITED TO
 170 KIAS MAXIMUM.



FAF - THR 3.9 NM

Knots	60	90	120	150	180
Min:Sec	3:54	2:36	1:57	1:34	1:18



CATEGORY	A	B	C	D	E
ILS 27	428 - 0.8 200 (200-0.8/1.2)				
LOC 27	580 - 0.8 345 (400-0.8/1.6)			580 - 1.2 345 (400-1.2/1.6)	
a CIRCLING	660 - 1.6 432 (500-1.6)	760 - 1.6 532 (600-1.6)	760 - 2.4 532 (600-2.4)	780 - 2.8 552 (600-2.8)	

ILS RWY 27 53°36.13'N
013°18.36'E **NEUBRANDENBURG (ETNU)**