

**TERPS
INSTRUMENT APPROACH CHART**

AD ELEV 228

**NDB-DME RWY 09
NEUBRANDENBURG (ETNU)**

BREMEN RADAR 373.975 134.650		NEUBRANDENBURG TWR 369.350 119.175					
NDB/DME NRG 357/NEG CH17Y	APP COURSE 086°	FAF ALT 1800		MDA 600	TDZE 225	ALS-Length 840 M	LDA 7522

CAUTION:

- ⓐ CIRCLING N OF AD ONLY
CIRCLING SPEED LIMITED TO
170 KIAS MAXIMUM.

2°E
(2005)

LEGSA

111°
(21.6)
4000

072°
(16.4)
4000

GEVNI

204°
(10.8)
4000

IAF
53°36.17'N
013°20.30'E

FLD
CH118Y
117.15

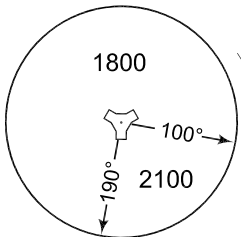
273° PADKU
(23.2)
4000

NEG CH17Y
(108.05)

IAF
NRG 357

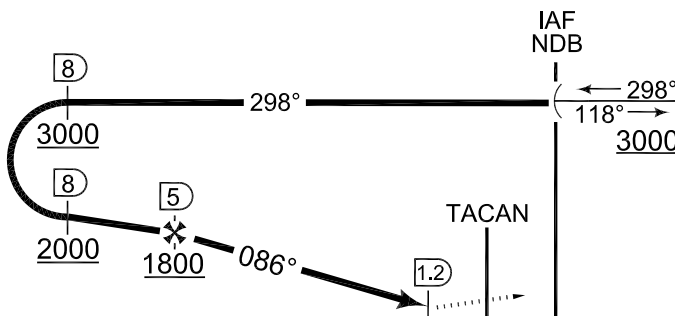
10 NM

MSA NEG 25 NM



EMERG SAFE ALT 100 NM 3100

TA 5000



MISSED APPROACH

Climb on RWY heading to 3000 ft.
When passing 5 DME NEG, RT,
rehome NDB, enter holding.

CAT I | 4.28 | TDZE 225

CATEGORY	A	B	C	D	E
NDB-DME 09	600 - 0.8 375 (400-0.8/1.6)		600 - 1.2 375 (400-1.2/1.6)	600 - 1.2 375 (400-1.2/2.0)	
ⓐ CIRCLING	660 - 1.6 432 (500-1.6)	760 - 1.6 532 (600-1.6)	760 - 2.4 532 (600-2.4)	780 - 2.8 552 (600-2.8)	

NDB-DME RWY 09

53°36.13'N
013°18.36'E

NEUBRANDENBURG (ETNU)