

**TERPS
 INSTRUMENT APPROACH CHART**

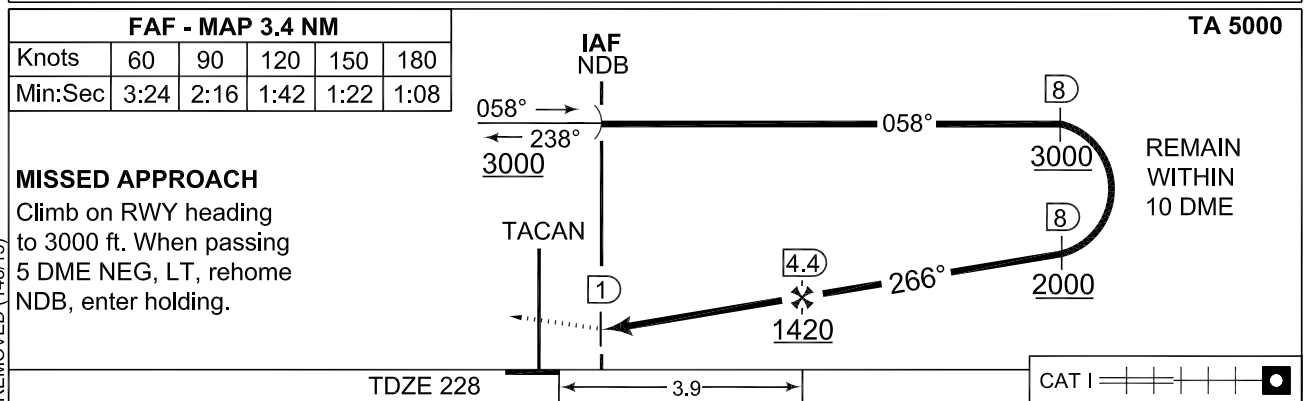
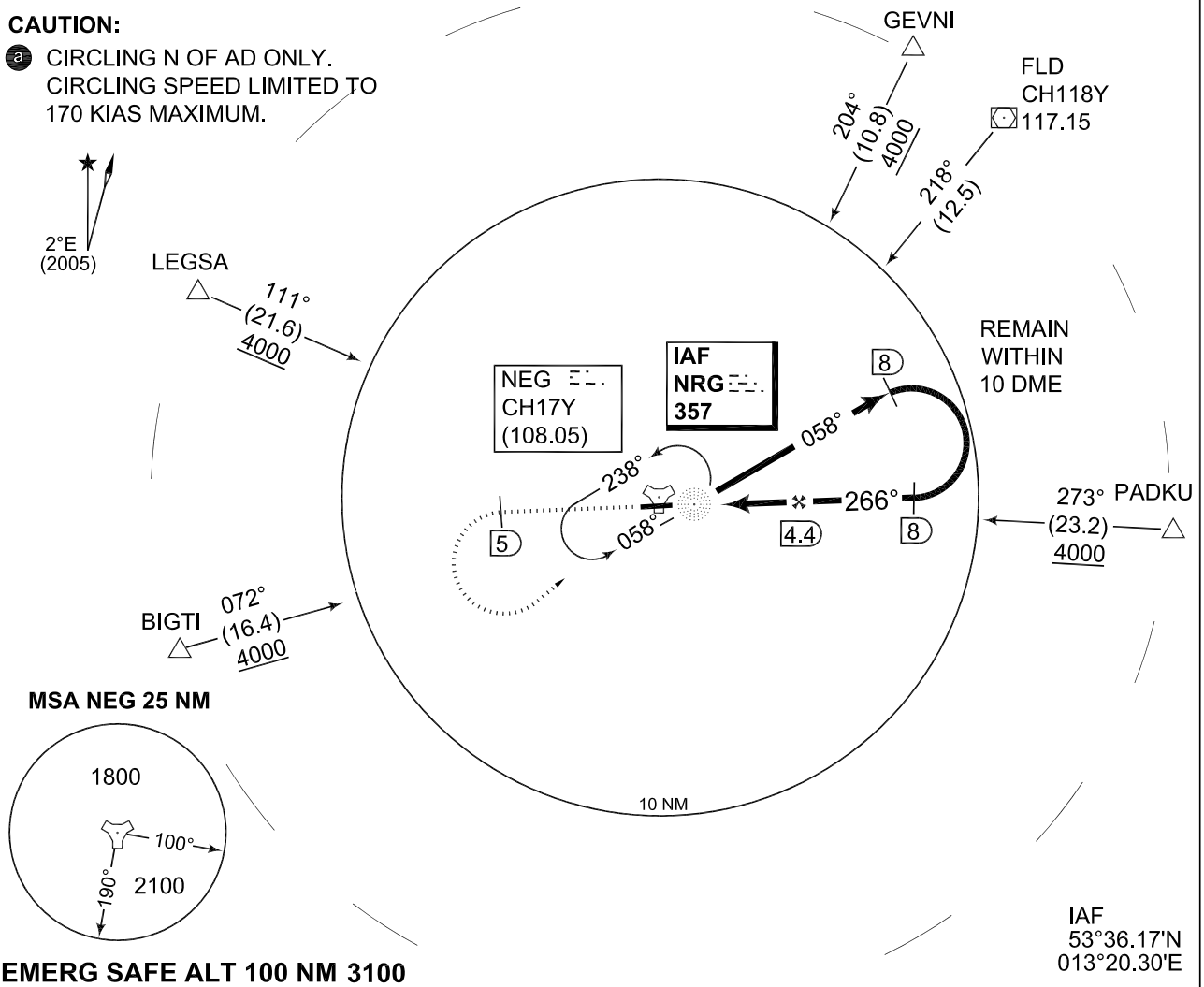
AD ELEV 228

**NDB-DME RWY 27
 NEUBRANDENBURG (ETNU)**

BREMEN RADAR 373.975 134.650		NEUBRANDENBURG TWR 369.350 119.175					
NDB/DME NRG 357/NEG CH17Y	APP COURSE 266°	FAF ALT 1420	MDA 600	TDZE 228	ALS-Length 840 M	LDA 7522	

CAUTION:

- a** CIRCLING N OF AD ONLY.
 CIRCLING SPEED LIMITED TO
 170 KIAS MAXIMUM.



CATEGORY	A	B	C	D	E
NDB-DME 27	600 - 0.8 372 (400-0.8/1.6)		600 - 1.2 372 (400-1.2/1.6)	600 - 1.2 372 (400-1.2/2.0)	
a CIRCLING	660 - 1.6 432 (500-1.6)	760 - 1.6 532 (600-1.6)	760 - 2.4 532 (600-2.4)	780 - 2.8 552 (600-2.8)	

NDB-DME RWY 27 53°36.13'N **NEUBRANDENBURG (ETNU)**
 013°18.36'E

CHANGE: RADAR SERVICE REMOVED (148/13)

AFSBW 25 JUL 2013