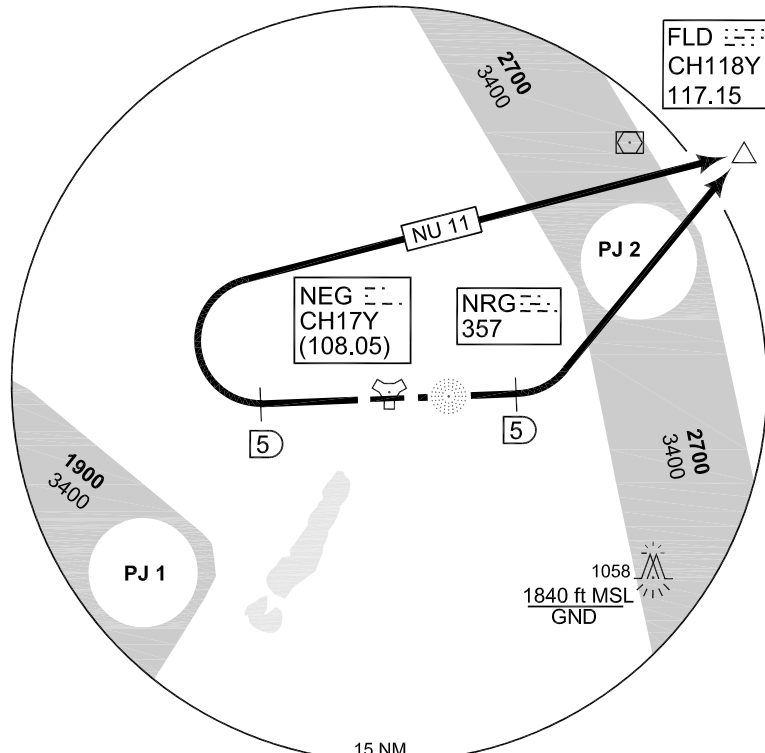
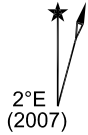


**TERPS
 INSTRUMENT DEPARTURE CHART**

AD ELEV 228

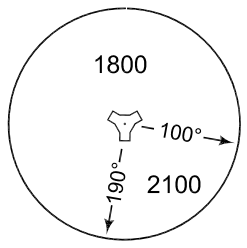
**NU 11 - 31
 NEUBRANDENBURG (ETNU)**

NEUBRANDENBURG TWR 369.350 119.175						BREMEN RADAR 373.975 134.650				
	RWY	Knots	90	120	180	240	300	360	to	
	09	V/V (fpm)	375	500	750	1000	1250	1500	1800 ft	
	27	V/V (fpm)	375	500	750	1000	1250	1500	1800 ft	



UDAXI
53°45.75'N 013°42.25'E
FLD R-088/ 5 DME

MSA NEG 25 NM



EMERG SAFE ALT 100 NM 3100

TA 5000

NU 11 (RWY 27)	<ul style="list-style-type: none"> - Climb on runway heading to NEG/5 DME - Turn right and proceed to UDAXI (FLD R-088/5 DME) - INITIAL CLIMB: 4000 ft
NU 31 (RWY 09)	<ul style="list-style-type: none"> - Climb on runway heading to NEG/5 DME - Turn left and proceed to UDAXI (FLD R-088/5 DME) - INITIAL CLIMB: 4000 ft

CHANGE: RADAR SERVICE REMOVED (148/13)

AFSBW 25 JUL 2013

NU 11 - 31

53°36.13'N
013°18.36'E

NEUBRANDENBURG (ETNU)