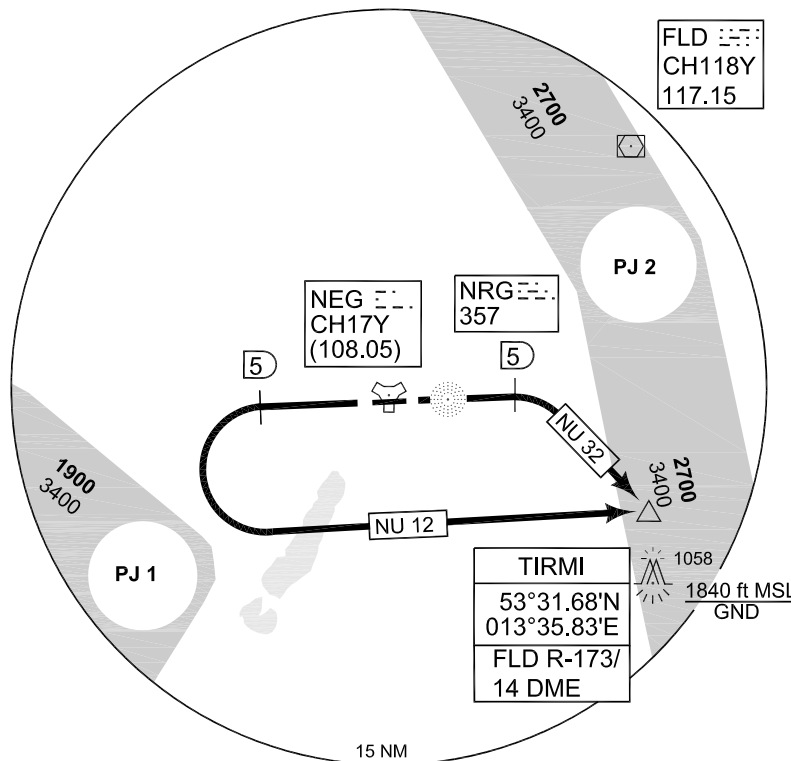


**TERPS
INSTRUMENT DEPARTURE CHART**

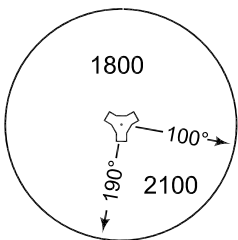
AD ELEV 228

**NU 12 - 32
NEUBRANDENBURG (ETNU)**

NEUBRANDENBURG TWR 369.350 119.175						BREMEN RADAR 373.975 134.650				
	RWY	Knots	90	120	180	240	300	360	to	
	09	V/V (fpm)	375	500	750	1000	1250	1500	1800 ft	
	27	V/V (fpm)	480	640	960	1280	1600	1920	4000 ft	



MSA NEG 25 NM



EMERG SAFE ALT 100 NM 3100

TA 5000

<p>NU 12 (RWY 27)</p>	<ul style="list-style-type: none"> - Climb on runway heading to NEG/5 DME - Turn left and proceed to TIRMI (FLD R-173/14 DME) - INITIAL CLIMB: 4000 ft
<p>NU 32 (RWY 09)</p>	<ul style="list-style-type: none"> - Climb on runway heading to NEG/5 DME - Turn right and proceed to TIRMI (FLD R-173/14 DME) - INITIAL CLIMB: 4000 ft

NU 12 - 32

53°36.13'N
013°18.36'E

NEUBRANDENBURG (ETNU)

CHANGE: RADAR SERVICE REMOVED (148/13)

AFSBw 25 JUL 2013