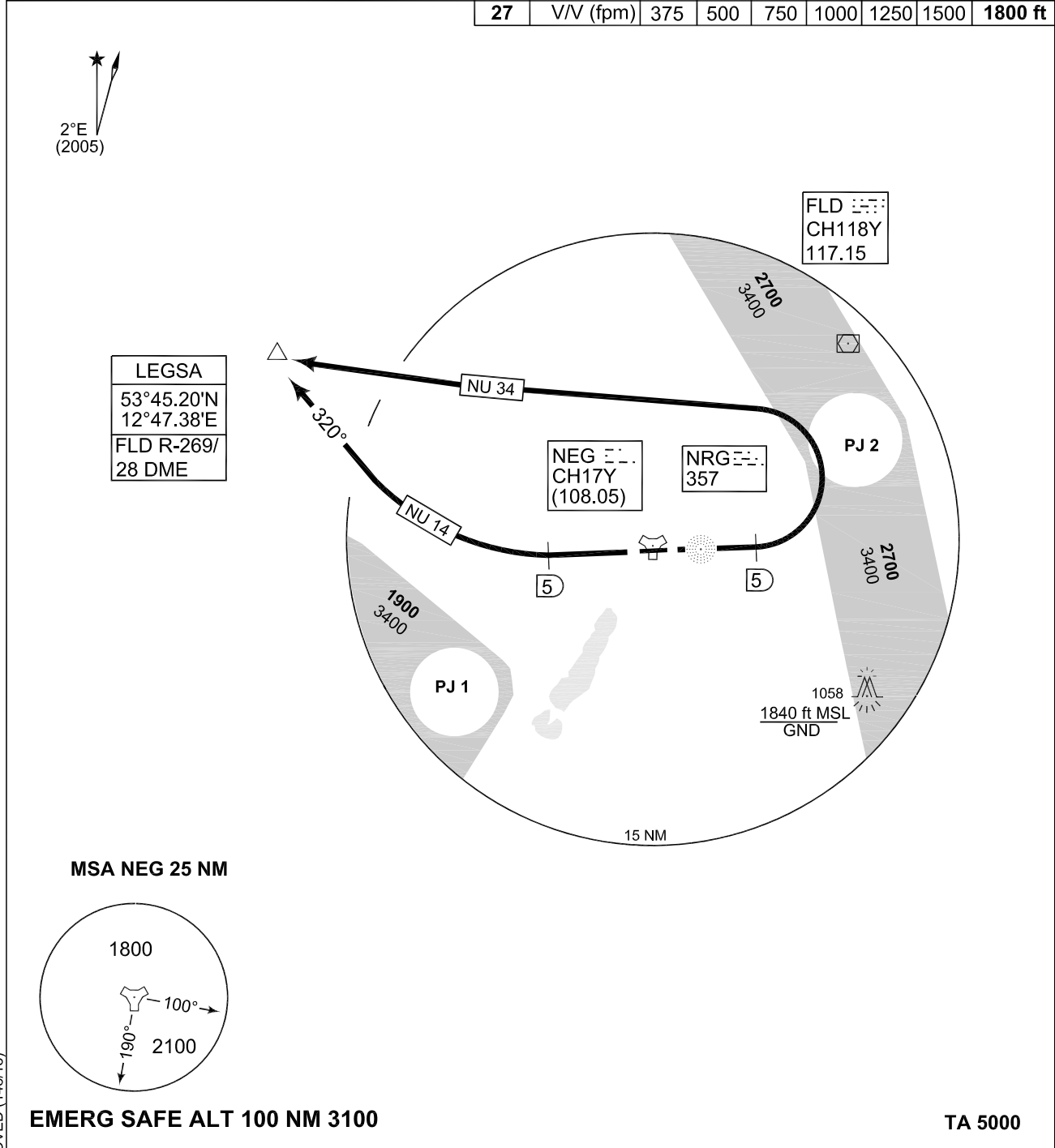


**TERPS
INSTRUMENT DEPARTURE CHART**

AD ELEV 228

**NU 14 - 34
NEUBRANDENBURG (ETNU)**

NEUBRANDENBURG TWR 369.350 119.175						BREMEN RADAR 373.975 134.650				
	RWY	Knots	90	120	180	240	300	360	to	
	09	V/V (fpm)	375	500	750	1000	1250	1500	1800 ft	
	27	V/V (fpm)	375	500	750	1000	1250	1500	1800 ft	



NU 14 (RWY 27)	<ul style="list-style-type: none"> - Climb on runway heading to NEG/5 DME - Turn right on track 320° and proceed to LEGSA (53°45.20'N 12°47.38'E) - INITIAL CLIMB: 4000 ft
NU 34 (RWY 09)	<ul style="list-style-type: none"> - Climb on runway heading to NEG/5 DME - Turn left and proceed to LEGSA (53°45.20'N 12°47.38'E) - INITIAL CLIMB: 4000 ft

NU 14 - 34

53°36.13'N
013°18.36'E

NEUBRANDENBURG (ETNU)

CHANGE: RADAR SERVICE REMOVED (148/13)

AFSBw 25 JUL 2013