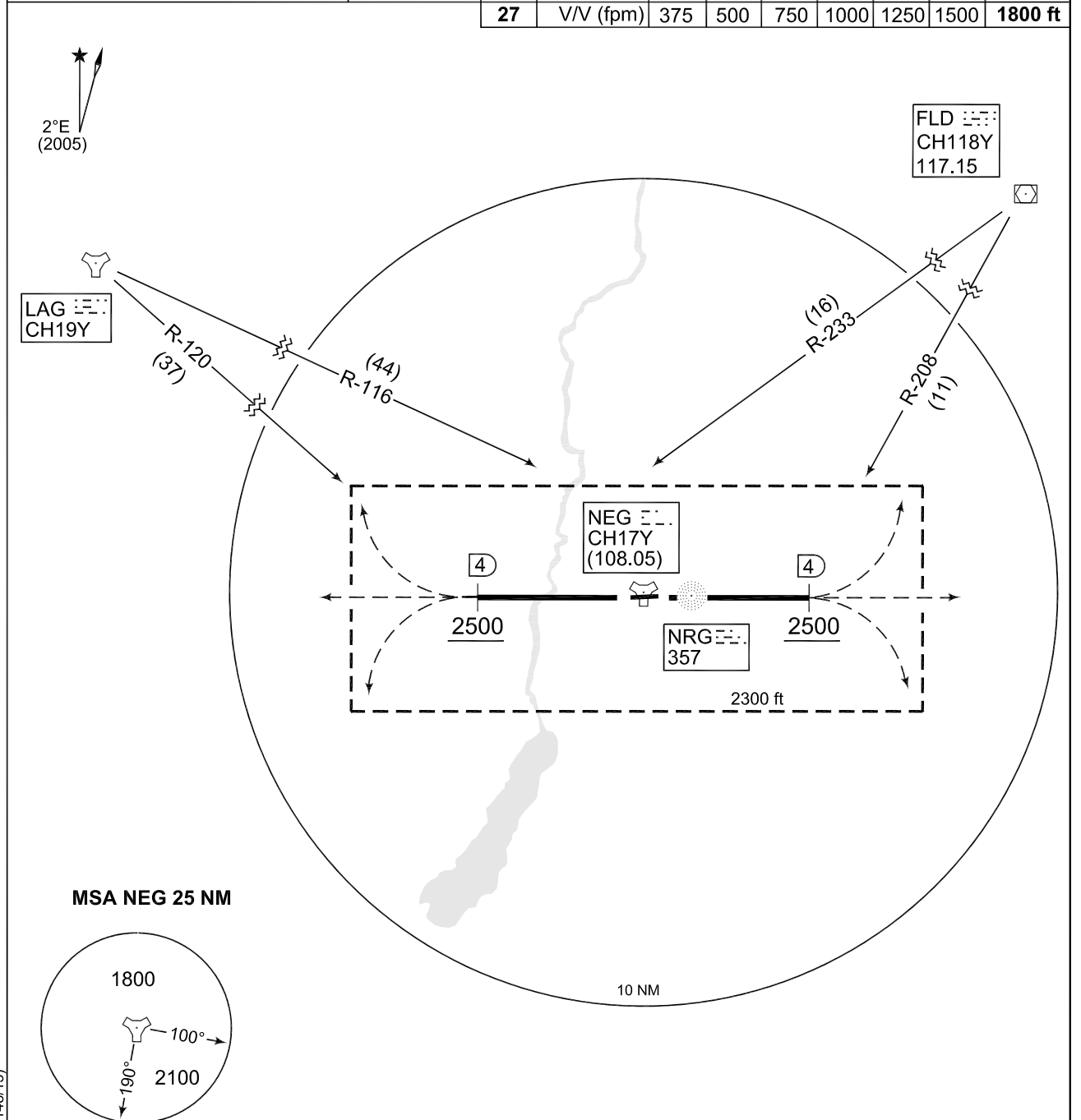


**TERPS
 OPERATIONAL INSTRUMENT DEPARTURE CHART**

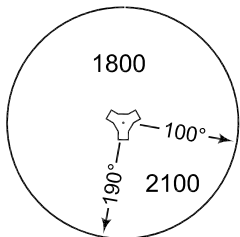
AD ELEV 228

**NU 109 - 127
 NEUBRANDENBURG (ETNU)**

NEUBRANDENBURG TWR 369.350 119.175									BREMEN RADAR 373.975 134.650
	RWY	Knots	90	120	180	240	300	360	to
	09	V/V (fpm)	375	500	750	1000	1250	1500	1800 ft
	27	V/V (fpm)	375	500	750	1000	1250	1500	1800 ft



MSA NEG 25 NM



EMERG SAFE ALT 100 NM 3100

TA 5000

NU 109 (RWY 09)	<ul style="list-style-type: none"> - Climb straight ahead to 2500 ft - Reach 2500 ft within 4 DME - Continue as cleared by ATC - Initial Climb: 4000 ft
NU 127 (RWY 27)	<ul style="list-style-type: none"> - Climb straight ahead to 2500 ft - Reach 2500 ft within 4 DME - Continue as cleared by ATC - Initial Climb: 4000 ft

CHANGE: RADAR SERVICE REMOVED (148/13)

AFSBw 25 JUL 2013

NU 109 - 127

53°36.13'N
 013°18.36'E

NEUBRANDENBURG (ETNU)