

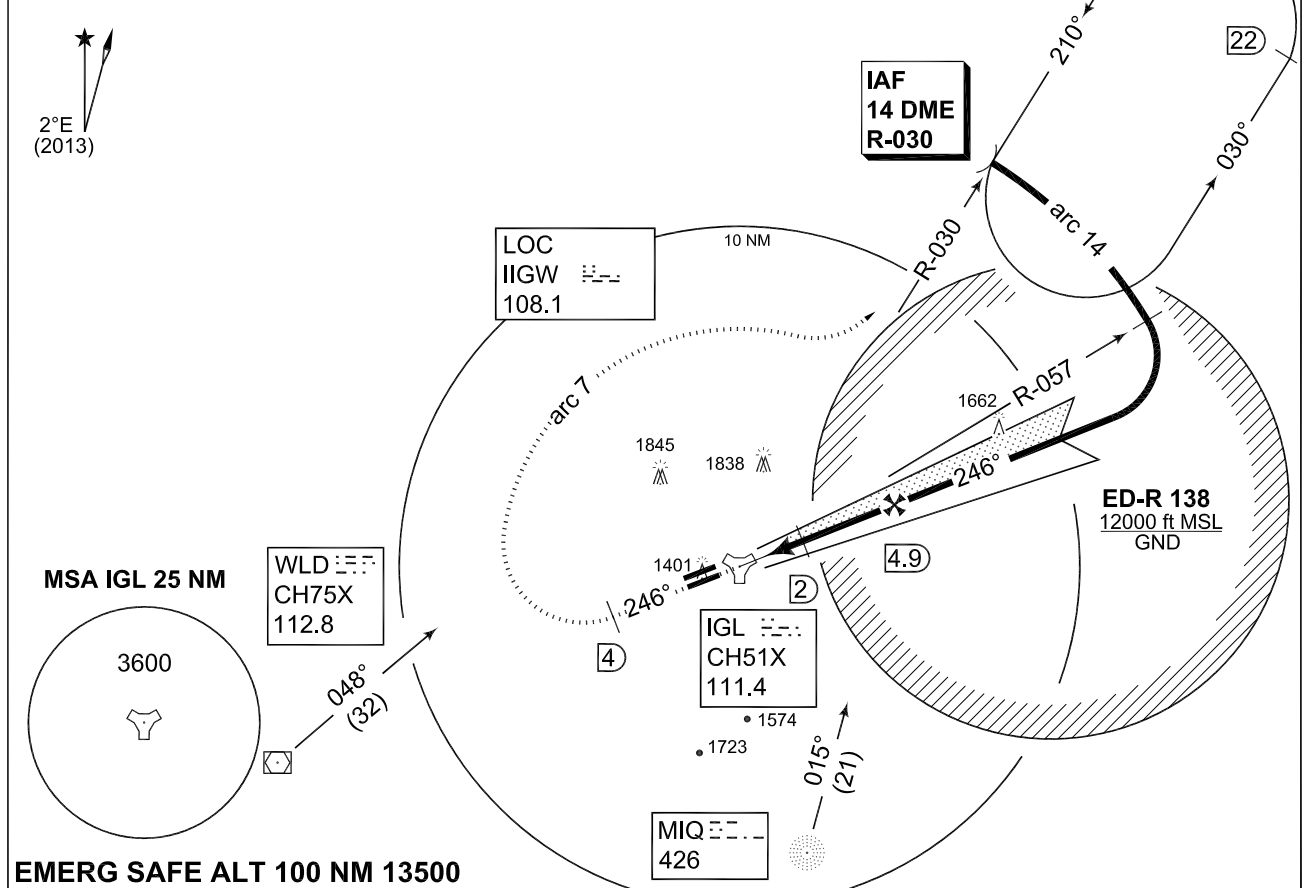
MIPS INSTRUMENT APPROACH CHART **ILS X or LOC RWY 25L INGOLSTADT/MANCHING (ETSI)**

MÜNCHEN RADAR 242.200	INGO RADAR 278.100 120.600 125.575	INGO TWR 373.200 125.250	AD ELEV 1203
TACAN / LOCALIZER IGL CH51X / IIGW 108.1	APP COURSE 246°	GS INTCP ALT 3000	GS 3.0°/5.2%
	DA see CAT	TDZE 1197	ALS-Length 900 M
		LDA 9646	

NOTE:

- a) MISSED APCH TURN LIMITED TO 230 KIAS MAXIMUM.
- b) CIRCLING NOT AUTHORIZED NORTH OF RWY 07L/25R.
CIRCLING CAT B SPEED LIMITED TO 130 KIAS.
- c) DME REQUIRED

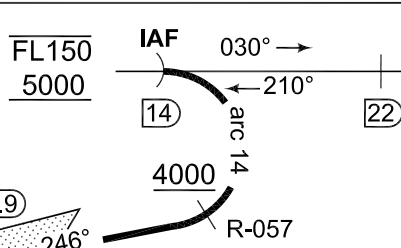
IAF
48°54.94'N
011°45.43'E



EMERG SAFE ALT 100 NM 13500

MISSED APPROACH

Climb on IGL track 246° to altitude 5000ft. At IGL R-246/4 DME turn right to intercept arc 7. Intercept IGL R-030 and proceed to IAF.



TA 5000

CHANGE: NEW PROCEDURES (274/13)

TCH 56	TDZE 1197	0.6	4.9	CAT II/III
--------	-----------	-----	-----	------------

CATEGORY	A	B	C	D	E
ILS 25L	1397 - 550 200 (200-0.8/1.2)				1401 - 550 204 (200-0.8/1.2)
LOC 25L	1550 - 0.8 353 (400-0.8/1.6)	1550 - 0.8 353 (400-1.2/1.6)		1550 - 1.2 353 (400-1.2/2.0)	
b) CIRCLING	1700 - 1.6 497 (500-1.6)	1700 - 1.6 497 (500-1.6)	2480 - 4.8 1277 (1300-4.8)	2630 - 4.8 1427 (1500-4.8)	2630 - 4.8 1427 (1500-4.8)

ILS X or LOC RWY 25L **INGOLSTADT/MANCHING (ETSI)**

48°42.94'N
011°32.02'E

AFSBw 19 SEP 2013