

**PANS-OPS  
 INSTRUMENT APPROACH CHART**

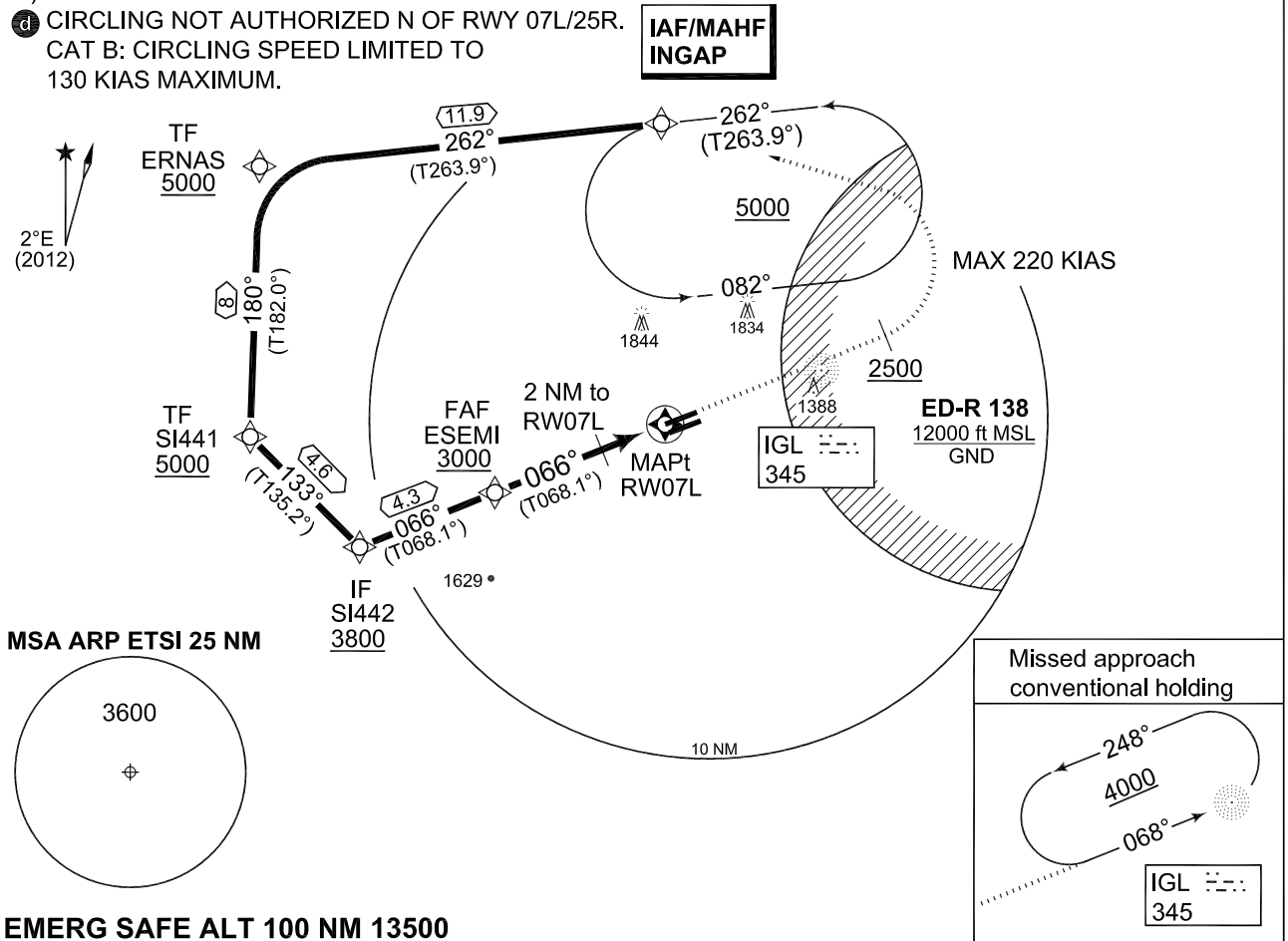
AD ELEV 1203

**RNAV (GNSS) RWY 07L  
 INGOLSTADT/MANCHING (ETSI)**

MUENCHEN RADAR 242.200	INGO RADAR 278.100 120.600 125.575			INGO TWR 373.200 125.250			
NDB IGL 345	APP COURSE 066°	FAF ALT 3000	GS 3.1°	MDA see CAT	TDZE 1196	ALS-Length 900 M	LDA 8000

**NOTE:**

- a) GPS QUALIFICATION REQUIRED.
- b) MISSED APCH TURN LIMITED TO KIAS 220.
- c) NO TURN BEFORE MAPt.
- ④ CIRCLING NOT AUTHORIZED N OF RWY 07L/25R.  
 CAT B: CIRCLING SPEED LIMITED TO 130 KIAS MAXIMUM.



**EMERG SAFE ALT 100 NM 13500**

Distance THR	5	4	3	2	1
Altitude	2930	2590	2250	1910	1570

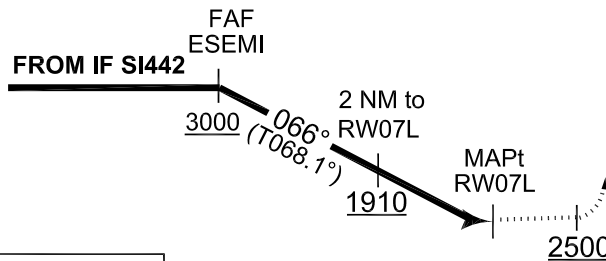
**TA 5000**

**MISSED APPROACH**

Climb on track 066°. When passing 2500 ft turn left direct INGAP. Climb to 5000 ft and enter holding. [M066,A2500+;L] - INGAP [A5000+]

**CONVENTIONAL MISSED APPROACH**

Climb inbound IGL NDB. Climb within published holding to 4000 ft.



CAT I

5.2 TDZE 1196

**TCH 50**

CATEGORY	A	B	C	D	E
<b>MINIMA ACCORDING TO MIPS CRITERIA</b>					
GNSS 07L	1580 - 0.8 384 (400-0.8/1.6)	1590 - 1.2 394 (400-1.2/1.6)	1610 - 1.2 414 (500-1.2/2.0)		
④ CIRCLING	1700 - 1.6 497 (500-1.6)	1700 - 1.6 497 (500-1.6)	2480 - 4.8 1277 (1300-4.8)	2630 - 4.8 1427 (1500-4.8)	2630 - 4.8 1427 (1500-4.8)

**RNAV (GNSS) RWY 07L** 48°42.94'N  
 011°32.02'E

**INGOLSTADT/MANCHING (ETSI)**

CHANGE: NOTE (180/12)

AFSBw 18 OCT 2012

**PANS-OPS  
INSTRUMENT APPROACH CHART**

**WAY POINT LIST RWY 07L  
INGOLSTADT/MANCHING (ETSI)**

**RWY 07L from INGAP APPROACH RNAV (GNSS)**

INGAP (IAWP)	48 51 58.000 N	011 31 06.000 E
ERNAS (TWP)	48 50 41.000 N	011 13 10.000 E
SI441 (TWP)	48 42 43.000 N	011 12 45.000 E
SI442 (IWP)	48 39 27.901 N	011 17 37.013 E
ESEMI (FAWP)	48 41 04.093 N	011 23 38.150 E
RW07L (MAWP)	48 42 59.998 N	011 30 55.384 E
INGAP (MAHWP)	48 51 58.000 N	011 31 06.000 E

**Threshold Coordinates**

RWY 07L	48 42 59.998 N	011 30 55.384 E
---------	----------------	-----------------

CHANGE: NOTE (180/12)

AFSBw 18 OCT 2012

**WAY POINT LIST RWY 07L**

**INGOLSTADT/MANCHING (ETSI)**