

**PANS-OPS
 INSTRUMENT APPROACH CHART**

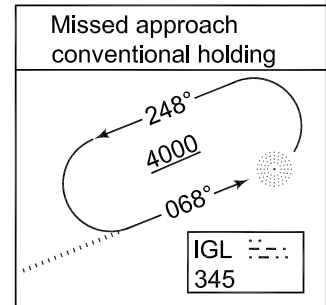
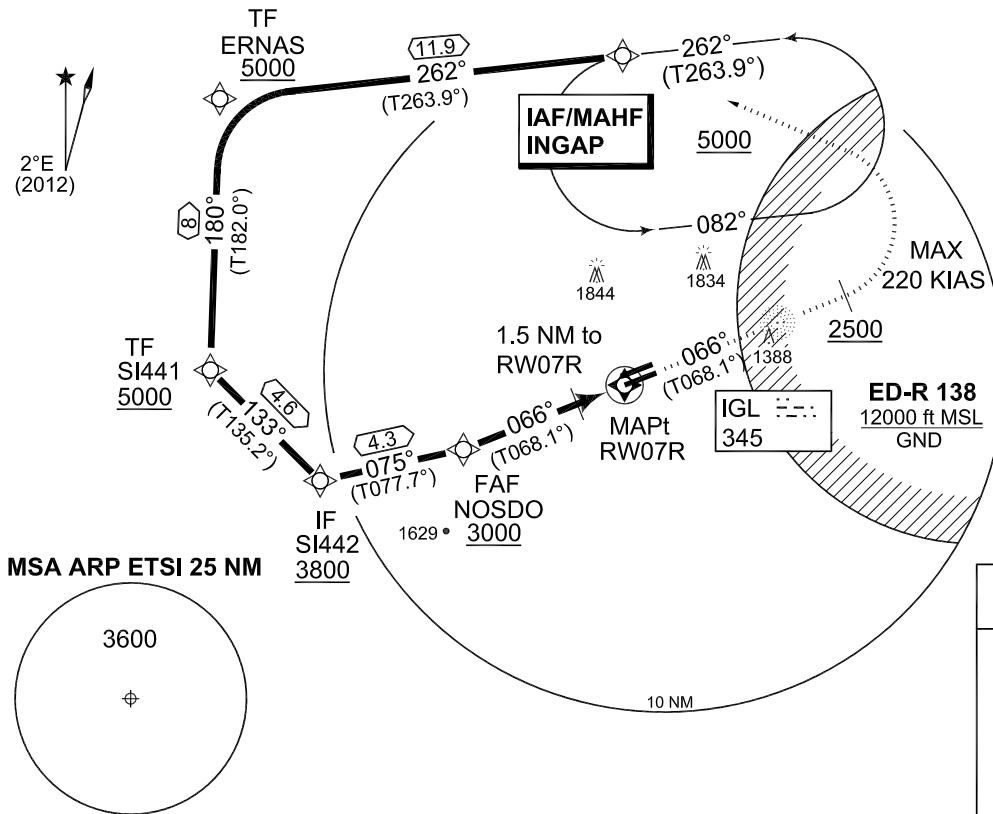
AD ELEV 1203

**RNAV (GNSS) RWY 07R
 INGOLSTADT/MANCHING (ETSI)**

MUENCHEN RADAR 242.200	INGO RADAR 278.100 120.600 125.575			INGO TWR 373.200 125.250			
NDB IGL 345	APP COURSE 066°	FAF ALT 3000	GS 3.2°	MDA see CAT	TDZE 1201	ALS-Length 855 M	LDA 9646

NOTE:

- a) GPS QUALIFICATION REQUIRED.
 - b) MISSED APCH TURN LIMITED TO KIAS 220.
 - c) NO TURN BEFORE MAPt.
 - d) CIRCLING NOT AUTHORIZED N OF RWY 07L/25R.
- CAT B: CIRCLING SPEED LIMITED TO 130 KIAS MAXIMUM.



EMERG SAFE ALT 100 NM 13500

Distance THR	5	4	3	2	1
Altitude	2960	2620	2280	1940	1600

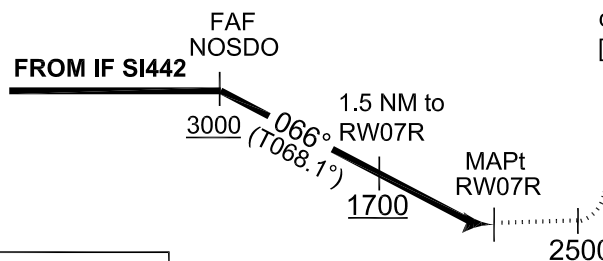
TA 5000

MISSED APPROACH

Climb on track 066°. When passing 2500 ft turn left direct INGAP. Climb to 5000 ft and enter holding.
 [M066, A2500+; L] - INGAP [A5000+]

CONVENTIONAL MISSED APPROACH

Climb straight ahead inbound IGL NDB. Climb within published holding to 4000 ft.



CAT I

5.1 TDZE 1201

TCH 50

CHANGE: NOTE (180/12)

CATEGORY	A	B	C	D	E
MINIMA ACCORDING TO MIPS CRITERIA					
GNSS 07R	1560 - 0.8 359 (400-0.8/1.6)		1560 - 1.2 359 (400-1.2/1.6)	1580 - 1.2 379 (400-1.2/2.0)	1620 - 1.6 419 (500-1.6/2.4)
d) CIRCLING	1700 - 1.6 497 (500-1.6)	1700 - 1.6 497 (500-1.6)	2480 - 4.8 1277 (1300-4.8)	2630 - 4.8 1427 (1500-4.8)	2630 - 4.8 1427 (1500-4.8)

RNAV (GNSS) RWY 07R

48°42.94'N
 011°32.02'E

INGOLSTADT/MANCHING (ETSI)

AFSBw 18 OCT 2012

**PANS-OPS
INSTRUMENT APPROACH CHART**

**WAY POINT LIST RWY 07R
INGOLSTADT/MANCHING (ETSI)**

RWY 07R from INGAP APPROACH RNAV (GNSS)

INGAP (IAWP)	48 51 58.000 N	011 31 06.000 E
ERNAS (TWP)	48 50 41.000 N	011 13 10.000 E
SI441 (TWP)	48 42 43.000 N	011 12 45.000 E
SI442 (IWP)	48 39 27.901 N	011 17 37.013 E
NOSDO (FAWP)	48 40 22.844 N	011 23 58.508 E
RW07R (MAWP)	48 42 16.475 N	011 31 07.260 E
INGAP (MAHWP)	48 51 58.000 N	011 31 06.000 E

Threshold Coordinates

RWY 07R	48 42 16.475 N	011 31 07.260 E
---------	----------------	-----------------

CHANGE: NOTE (180/12)

AFSBw 18 OCT 2012

WAY POINT LIST RWY 07R

INGOLSTADT/MANCHING (ETSI)