

**PANS-OPS
 INSTRUMENT APPROACH CHART**

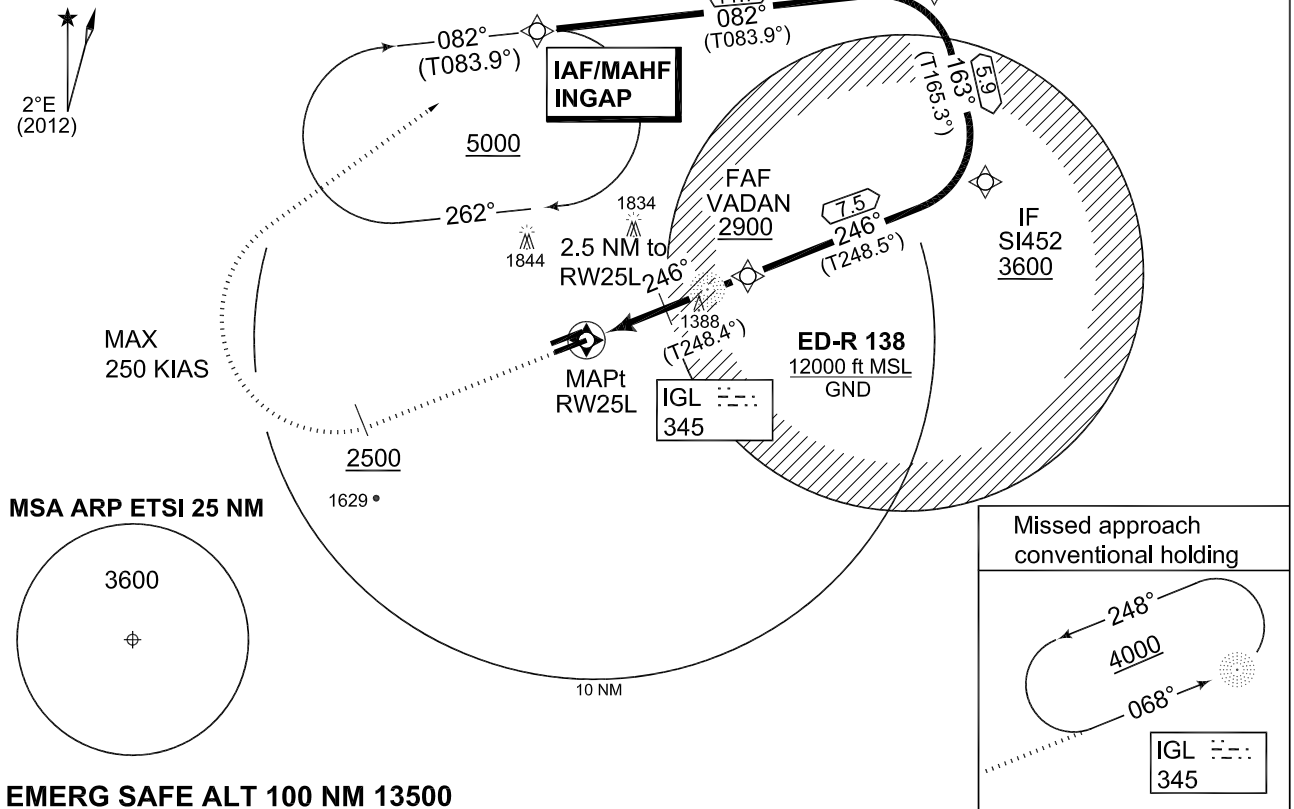
AD ELEV 1203

**RNAV (GNSS) RWY 25L
 INGOLSTADT/MANCHING (ETSI)**

MUNICHEN RADAR 242.200		INGO RADAR 278.100 120.600 125.575			INGO TWR 373.200 125.250			
NDB IGL 345	APP COURSE 246°	FAF ALT 2900	GS 3.1°	MDA see CAT	TDZE 1197	ALS-Length 900 M	LDA 9646	

NOTE:

- a) GPS QUALIFICATION REQUIRED.
- b) MISSED APCH TURN LIMITED TO KIAS 250.
- c) NO TURN BEFORE MAPt.
- d) MISSED APCH:
- e) CLIMB WITH MINIMUM 3% (183FT/NM) FOR ATC REASON.
 CIRCLING NOT AUTHORIZED N OF RWY 07L/25R.
 CAT B: CIRCLING SPEED LIMITED TO 130 KIAS MAXIMUM.



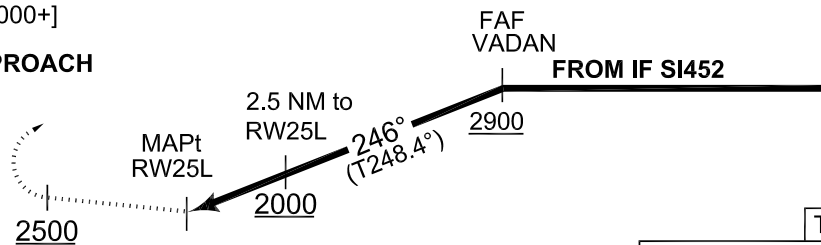
EMERG SAFE ALT 100 NM 13500

MISSED APPROACH

Climb on track 246°, when passing 2500 ft turn right direct INGAP. Climb to 5000 ft and enter holding.
 [M246, A2500+; R] - INGAP [A5000+]

CONVENTIONAL MISSED APPROACH

Climb on track 246°, when passing 2500 ft turn right inbound IGL NDB and enter published holding at 4000 ft.



TDZE 1197

5.1

CAT III/II

CATEGORY	A	B	C	D	E
MINIMA ACCORDING TO MIPS CRITERIA					
GNSS 25L	1570 - 0.8 373 (400-0.8/1.6)	1570 - 1.2 373 (400-1.2/1.6)	1570 - 1.2 373 (400-1.2/2.0)	1610 - 1.6 413 (500-1.6/2.4)	
CIRCLING	1700 - 1.6 497 (500-1.6)	1700 - 1.6 497 (500-1.6)	2480 - 4.8 1277 (1300-4.8)	2630 - 4.8 1427 (1500-4.8)	2630 - 4.8 1427 (1500-4.8)

RNAV (GNSS) RWY 25L

48°42.94'N
 011°32.02'E

INGOLSTADT/MANCHING (ETSI)

CHANGE: NOTE (18/0/12)

AFSBw 18 OCT 2012

**PANS-OPS
INSTRUMENT APPROACH CHART**

**WAY POINT LIST RWY 25L
INGOLSTADT/MANCHING (ETSI)**

RWY 25L from INGAP APPROACH RNAV (GNSS)

INGAP (IAWP)	48 51 58.000 N	011 31 06.000 E
SI451 (TWP)	48 53 11.000 N	011 48 47.000 E
SI452 (IWP)	48 47 30.243 N	011 51 02.812 E
VADAN (FAWP)	48 44 44.805 N	011 40 30.291 E
RW25L (MAWP)	48 42 51.757 N	011 33 20.837 E
INGAP (MAHWP)	48 51 58.000 N	011 31 06.000 E

Threshold Coordinates

RWY 25L	48 42 51.757 N	011 33 20.837 E
---------	----------------	-----------------

CHANGE: NOTE (18/0/12)

AFSBw 18 OCT 2012

WAY POINT LIST RWY 25L

INGOLSTADT/MANCHING (ETSI)